

DRAINAGE PLAN OF MAXWELL ADDITION TO WICHITA, SEDGWICK COUNTY, KANSAS.

Owner: PHIL RUFFIN
P.O. Box 17087
Wichita, Ks. 67217

Engineer: Professional Engineering Consultants P.A.
1440 E. English
Wichita, Ks. 67211

Utilities:

Gas - 6 in. Steel Gas Main on Webb Rd. located 33' West of & Webb Rd. running North-South (Gas Service)

Power: Closest place for 12 KV, 3φ, 4 wire is on Douglas Ave. in front of the Pizza Hut Main Bldg. (KG & E)

Water: East-West on Douglas, 8 in AC Main, located 1.5 ft. North of South Curb line.

North-South on Webb Rd is 20 in. AC. 48.5 feet West of & Webb Rd. (City of Wichita)

Teleph: Aerial Cable on Douglas, & buried cable on West side of Webb Rd. (S. Western Bell)

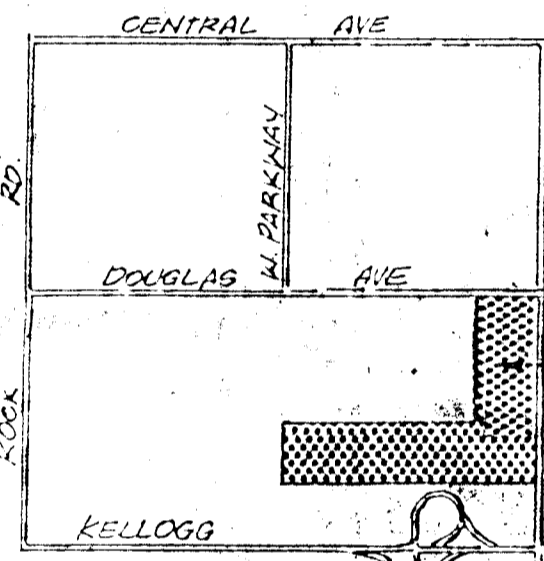
San Sewer: From M.H. Showing San Sewer goes east to serve Pizza Hut Addition.

Notes: Zoning: Entire tract is now zoned "AA" Lots 1, 2, 3, 5 are proposed "LC", Lots 4 & 6 are proposed "BB" & Lot 7 is to remain "AA" zoning. Setback: For bldg setback see Maxwell's CUP (DP-16)

LEGEND

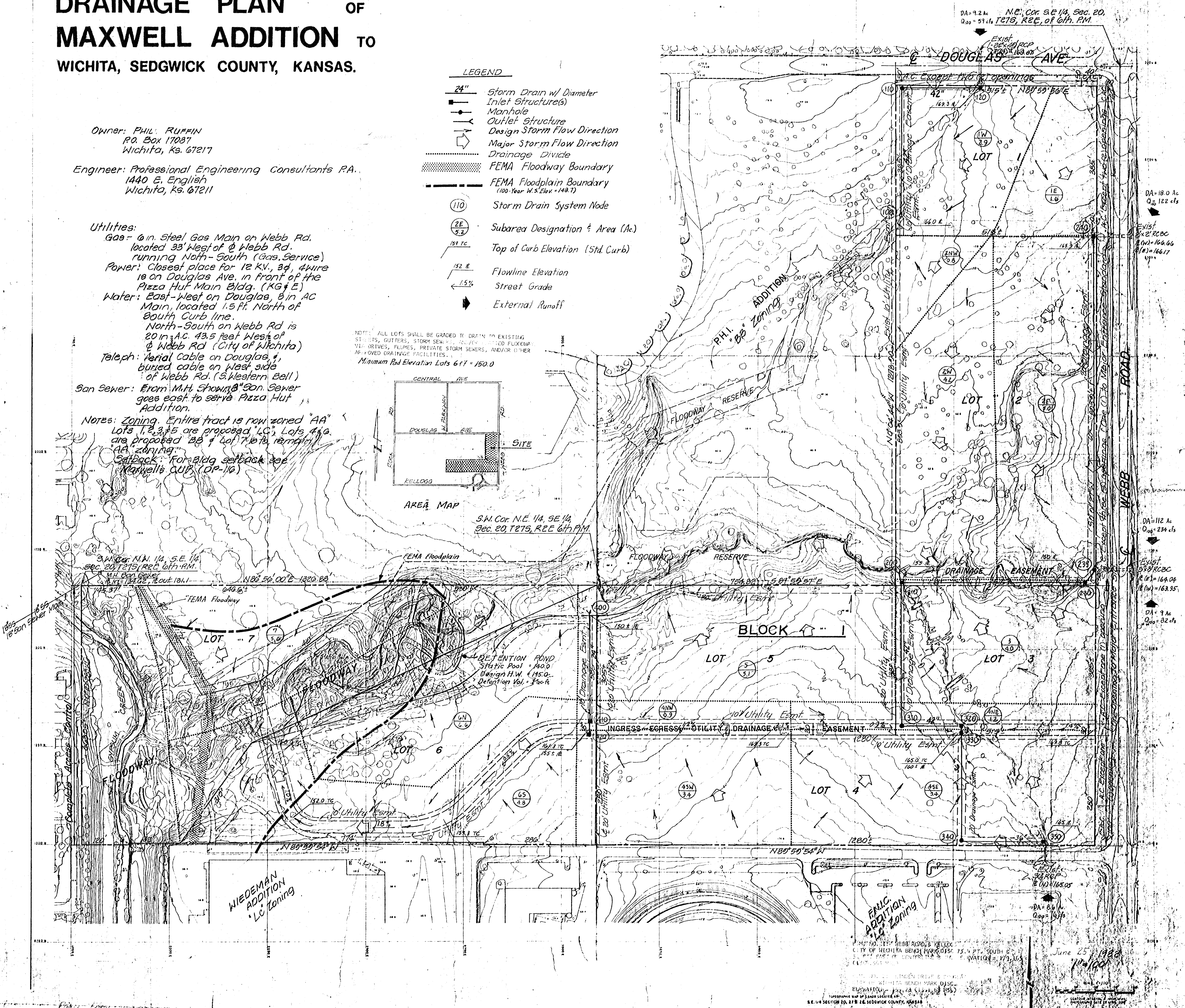
- 24" Storm Drain w/ Diameter Inlet Structure(s)
- Manhole
- Outlet Structure
- Design Storm Flow Direction
- Major Storm Flow Direction
- Drainage Divide
- FEMA Floodway Boundary
- FEMA Floodplain Boundary (100-Year H.S. Elev. + 1.48')
- Storm Drain System Node
- Subarea Designation & Area (Ac.)
- Top of Curb Elevation (Std. Curb)
- Flowline Elevation
- Street Grade
- External Runoff

NOTE: ALL LOTS SHALL BE GRADED TO DRAIN TO EXISTING STREETS, GUTTERS, STORM SEWER, DRAINAGE DITCHES, FLUMES, PRIVATE STORM SEWERS, AND/OR OTHER APPROVED DRAINAGE FACILITIES.
Minimum Pad Elevation Lots 6 & 7 = 150.0



AREA MAP

S.W. Cor. N.E. 1/4, S.E. 1/4
Sec. 20, T.15, R.2E, 6th PM



DA = 9.2 Ac
Q₁₀₀ = 57 cfs
N.E. Cor. S.E. 1/4, Sec. 20,
T.15, R.2E, of 6th PM

DA = 18.0 Ac
Q₁₀₀ = 122 cfs

DA = 112 Ac
Q₁₀₀ = 234 cfs

DA = 9 Ac
Q₁₀₀ = 22 cfs

June 25, 1988
11/1/88
M.P. NO. 157 WEBB ROAD & KELLOGG
CITY OF WICHITA BEING MARKED DISC
TOPOGRAPHIC MAP BY SAUER LOCATED AT
S.E. 1/4 SECTION 20, 27 & 28, SEDGWICK COUNTY, KANSAS