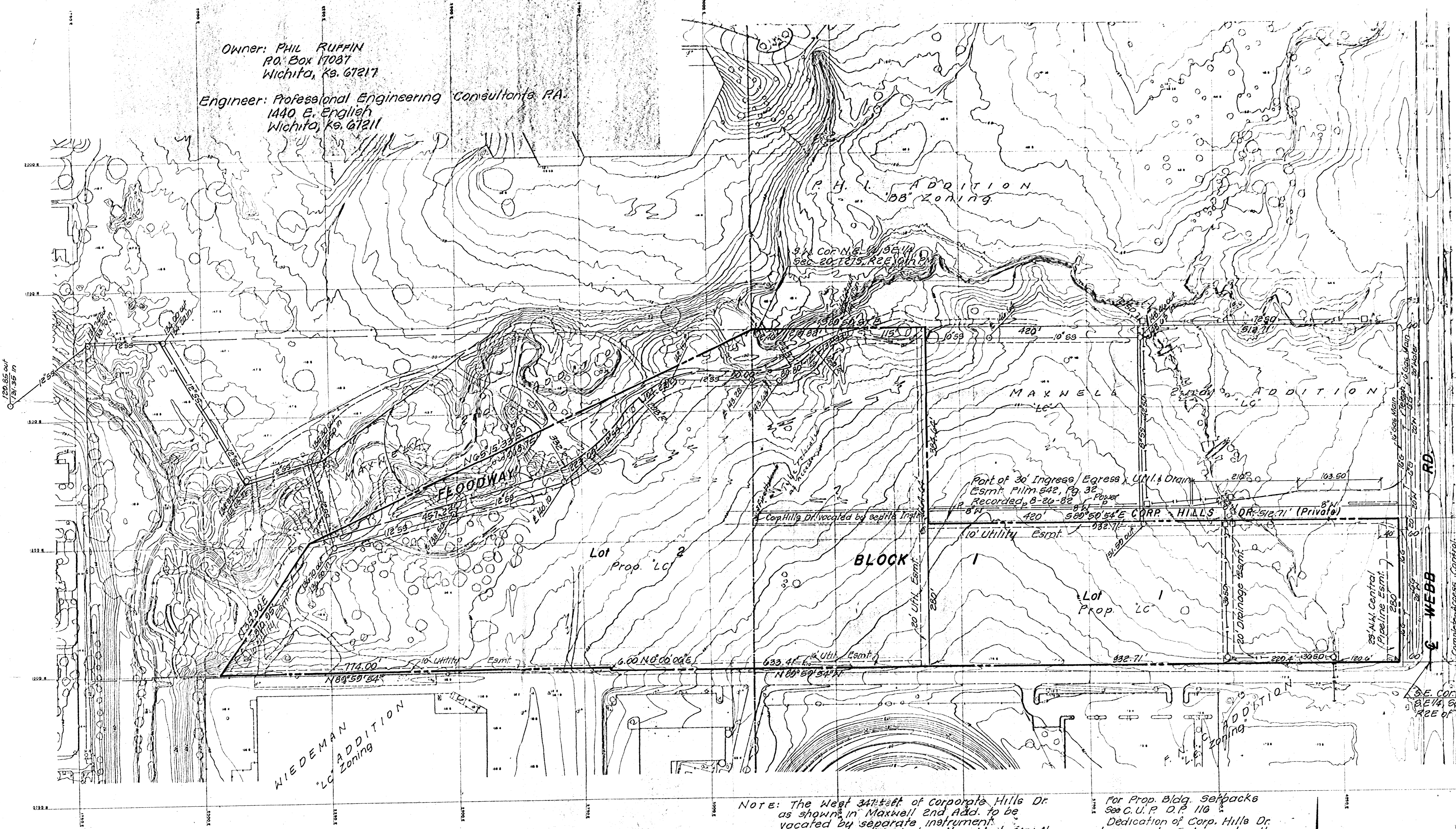


PRELIMINARY PLAT OF MAXWELL 3rd ADDITION TO WICHITA, SEDGWICK COUNTY, KANSAS.

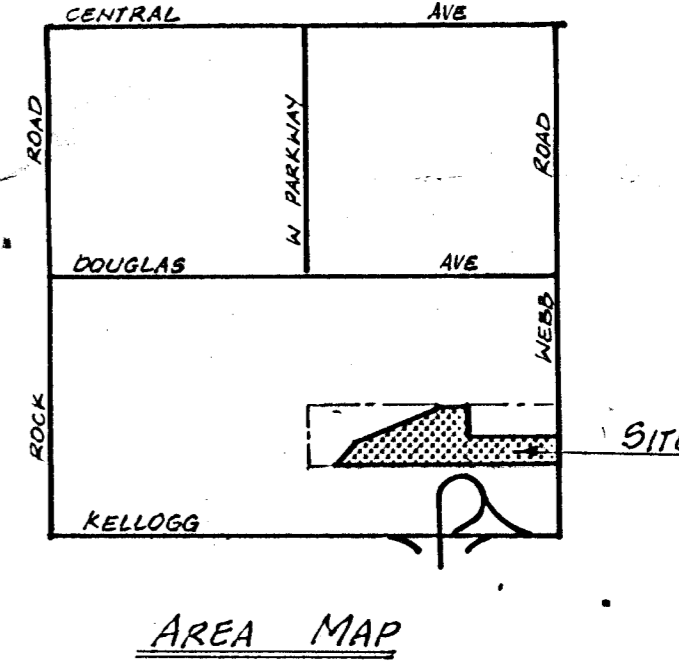
Owner: PHIL RUFFIN
P.O. Box 17087
Wichita, Ks. 67217

Engineer: Professional Engineering Consultants, P.A.
1440 E. English
Wichita, Ks. 67211



Scale 1" = 100'

B.M. City of Wichita Sta. disc
73.4' 50.4' 31' East of q's Inter. of
Webb Rd. & Kellogg.
Elev. = 179.16 City Datum.
July 19, 1985



NOTE: The West 347'± of Corporate Hills Dr. as shown in Maxwell 2nd Add. to be vacated by separate instrument. All utilities included in this West 347'± are subject to relocation together with those utilities inside esmt. between Lots 4 & 5 Maxwell 2nd & Lot 5 Maxwell 2nd & Lot 1, Maxwell Add.

For Prop. Bldg. Setbacks See C.U.P. D.P. 110 Dedication of Corp. Hills Dr. by separate instrument will be coordinated with the Development Plan for Lot 2.

TOPOGRAPHIC MAP OF LAND LOCATED AT S.E. 1/4 SECTION 20, 27 S., E.E. SEDGWICK COUNTY, KANSAS
CONTOUR INTERVAL: 1' (shown on map)
PHOTOGRAPHY DATE: 28 APRIL 1980