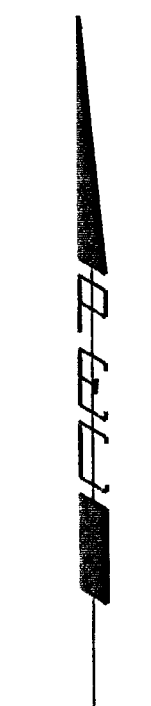
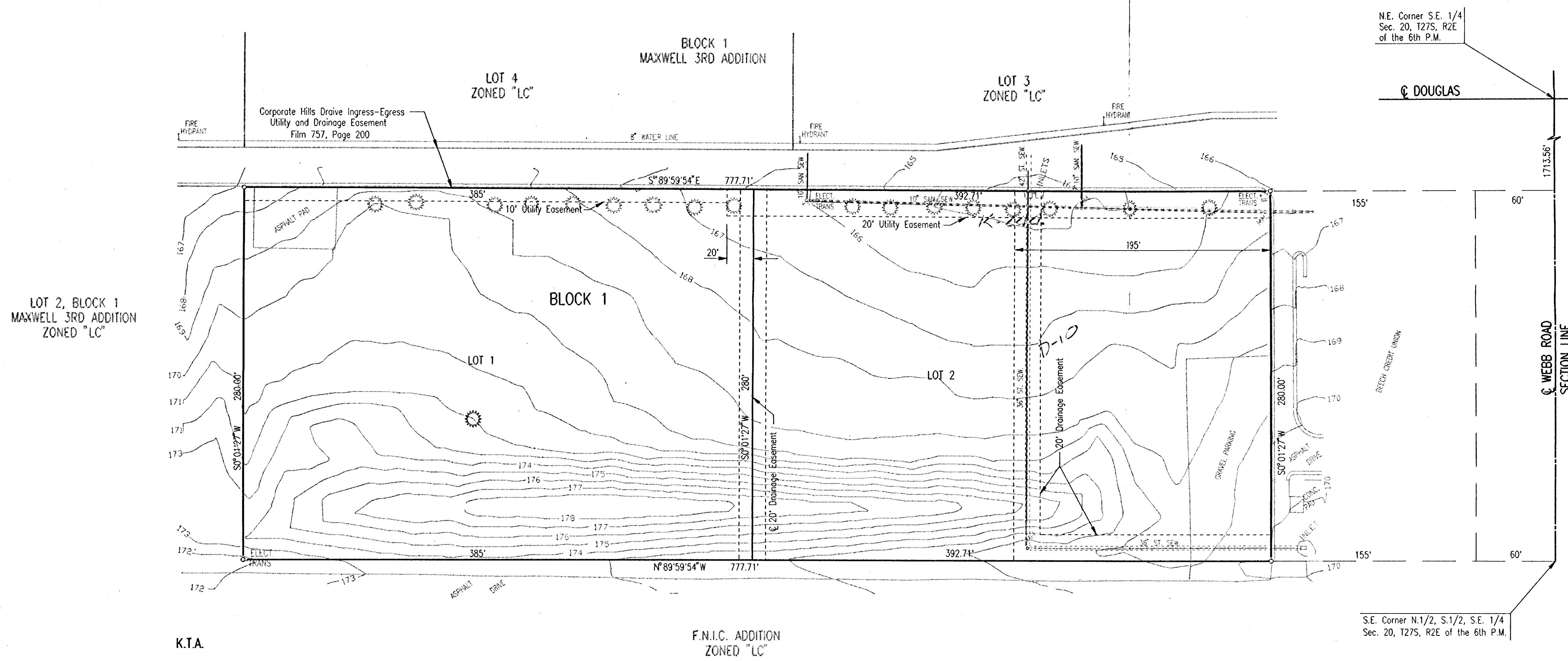


VICINITY MAP OF
MAXWELL 4TH ADDITION
 TO WICHITA, SEDGWICK COUNTY, KANSAS

OWNER: HUGH S. AND BARBARA MAXWELL
 c/o GARY SYNDER
 7701 E. KELLOGG, SUITE 200
 WICHITA, KANSAS 67207

ENGINEER: PROFESSIONAL ENGINEERING CONSULTANTS, P.A.
 303 S. TOPEKA
 WICHITA, KANSAS 67202



SCALE: 1"=50'

8-21-95
 ○ = IRON SET

TOPOGRAPHY DATE: JULY 20, 1995
 BY MUNICIPAL ENGINEERS

B.M. - CITY OF WICHITA STD. DISC 73.4" SOUTH AND 31" EAST OF THE INTERSECTION OF THE CENTERLINES OF WEBB ROAD AND KELLOGG.
 ELEV.=179.16 CITY DATUM
 ELEV.=1366.56 M.S.L.

FOR SETBACK LINES SEE AMENDED C.U.P. DP-116