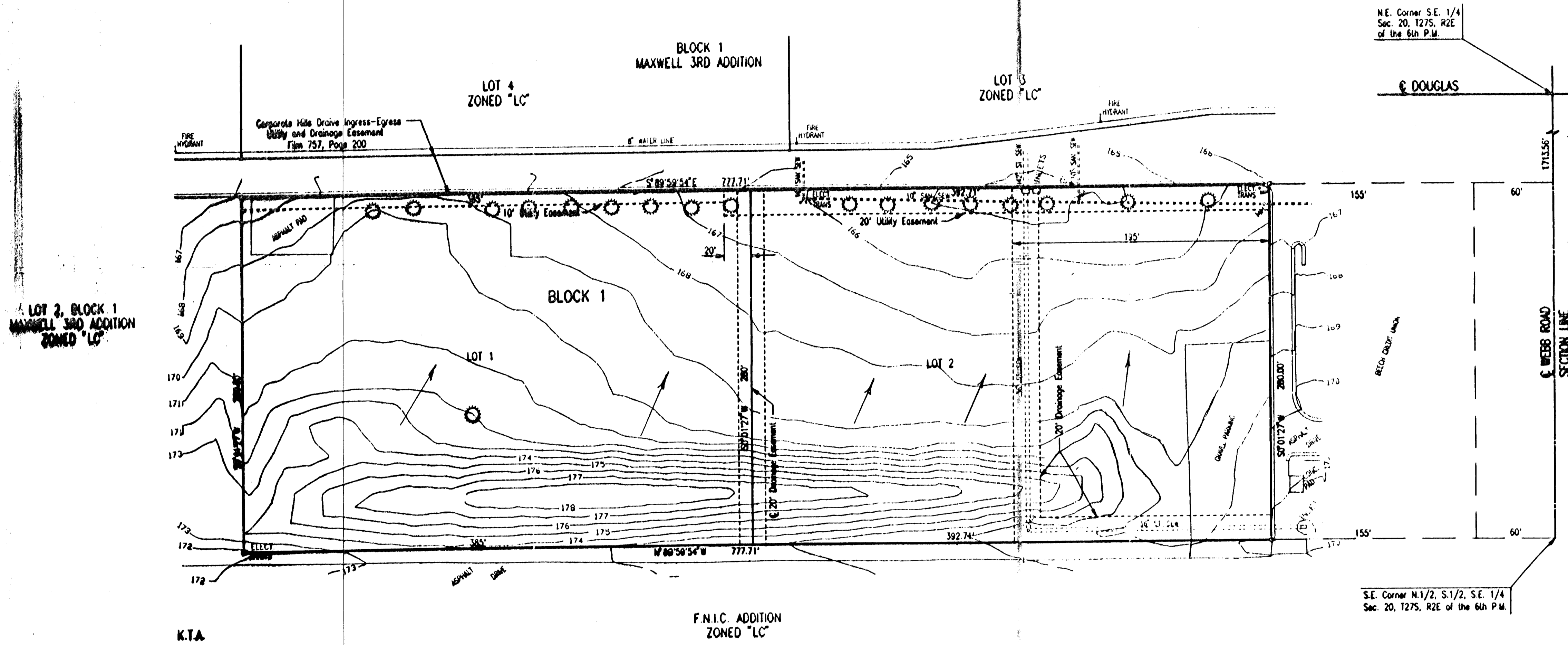


DRAINAGE PLAN 8-28-95
MAXWELL 4TH ADDITION
 TO WICHITA, SEDGWICK COUNTY, KANSAS

OWNER: HUGH S. AND BARBARA MAXWELL
 c/o GARY SYNDER
 7701 E. KELLOGG, SUITE 200
 WICHITA, KANSAS 67207

ENGINEER: PROFESSIONAL ENGINEERING CONSULTANTS, P.A.
 303 S. TOPEKA
 WICHITA, KANSAS 67202



SCALE: 1"=50'
 8-21-95
 o = IRON SET
 TOPOGRAPHY DATE: JULY 20, 1995
 BY MUNICIPAL ENGINEERS
 B.M. - CITY OF WICHITA STD. DISC 73.4" SOUTH AND 31" EAST OF THE INTERSECTION OF THE CENTERLINES OF WEBB ROAD AND KELLOGG.
 ELEV.=179.16 CITY DATUM
 EELEV.=1366.56 M.S.L.
 FOR SETBACK LINES SEE AMENDED C.U.P. DP-116

HYDROLOGY

BASIN	USE	AREA (Ac.)	C _e	C ₁₀₀	i _e	i ₁₀₀	Q _e	Q ₁₀₀
LOT 1	COMMERCIAL	2.5	0.68	0.80	3.80	7.36	6.5	14.7
LOT 2	COMMERCIAL	2.5	0.68	0.80	3.80	7.36	6.5	14.7

NOTE: ALL STORMWATER RUNOFF SHALL BE DIRECTED BY PRIVATE STORM SEWER, OVERLAND FLOW, STREETS, DRIVES, FLUMES, OR ANY OTHER APPROVED MEASURES TO THE EXISTING CITY OF WICHITA STORM SEWER SYSTEM.

LOT 2, BLOCK 1
 MAXWELL 3RD ADDITION
 ZONED "LC"

K.T.A.