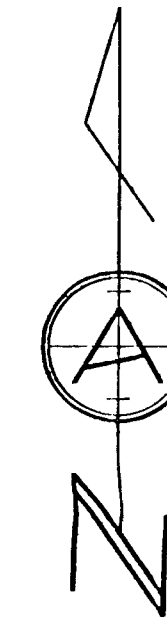
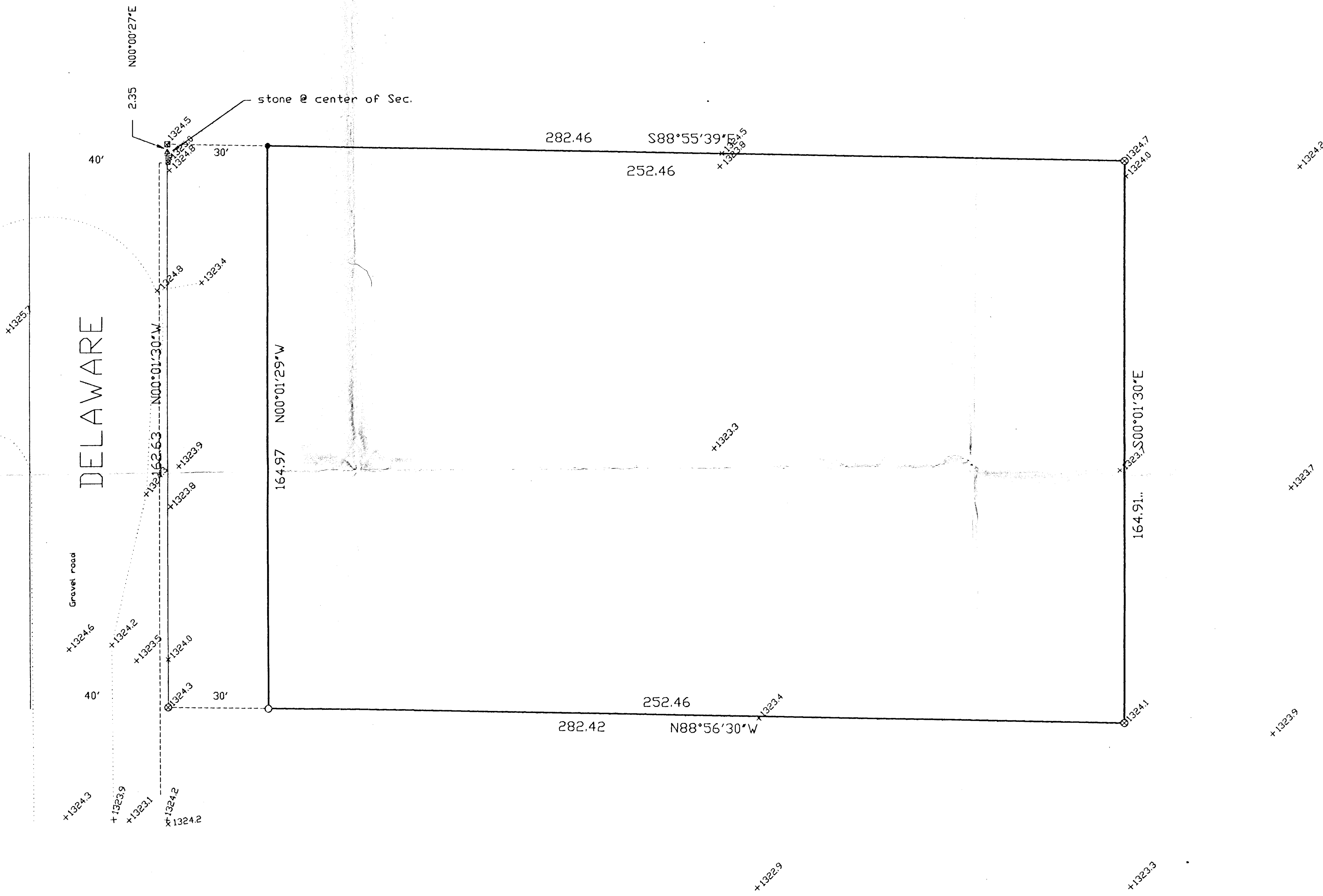


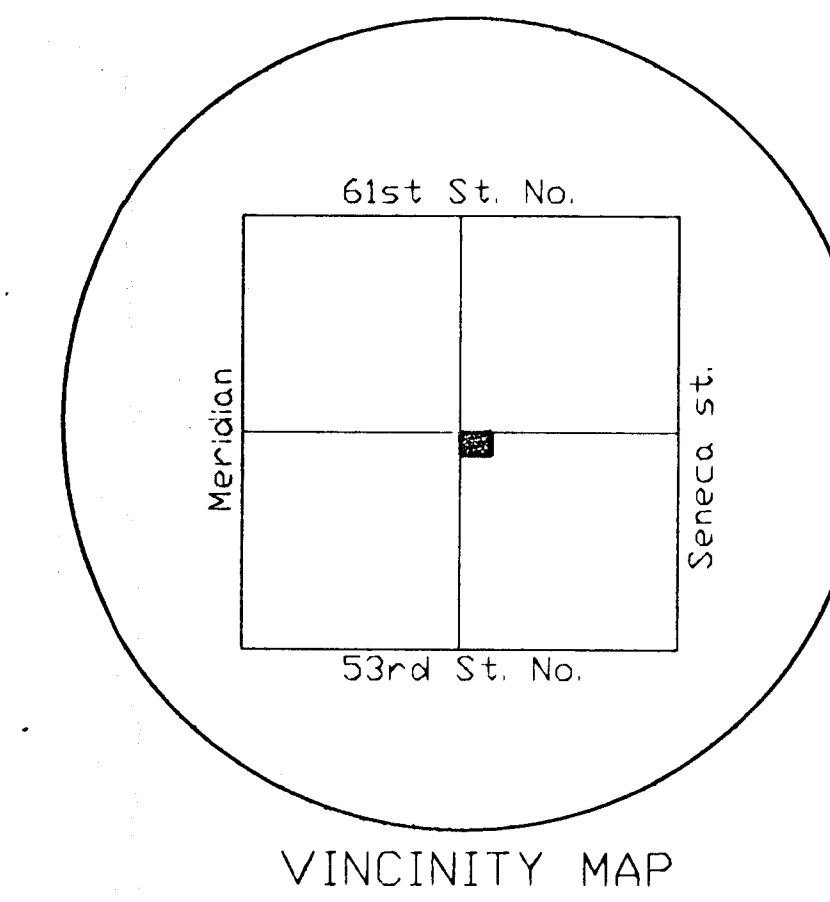
McCLERNON ADDITION TO SEDGWICK COUNTY, KANSAS



1"=20'

LEDGEND

•	- 5/8" iron bar set
o	- iron pipe found
TR	- tele riser
ET	- Elec transformer
---	- property line
- - -	- center line
- . - .	- easement line
- - - -	- setback line
- . - . - .	- buried utility line



1021 E. WATERMAN
SUITE 6
WICHITA, KANSAS
(316) 263-0082

ARMSTRONG LAND SURVEY, P.A.

