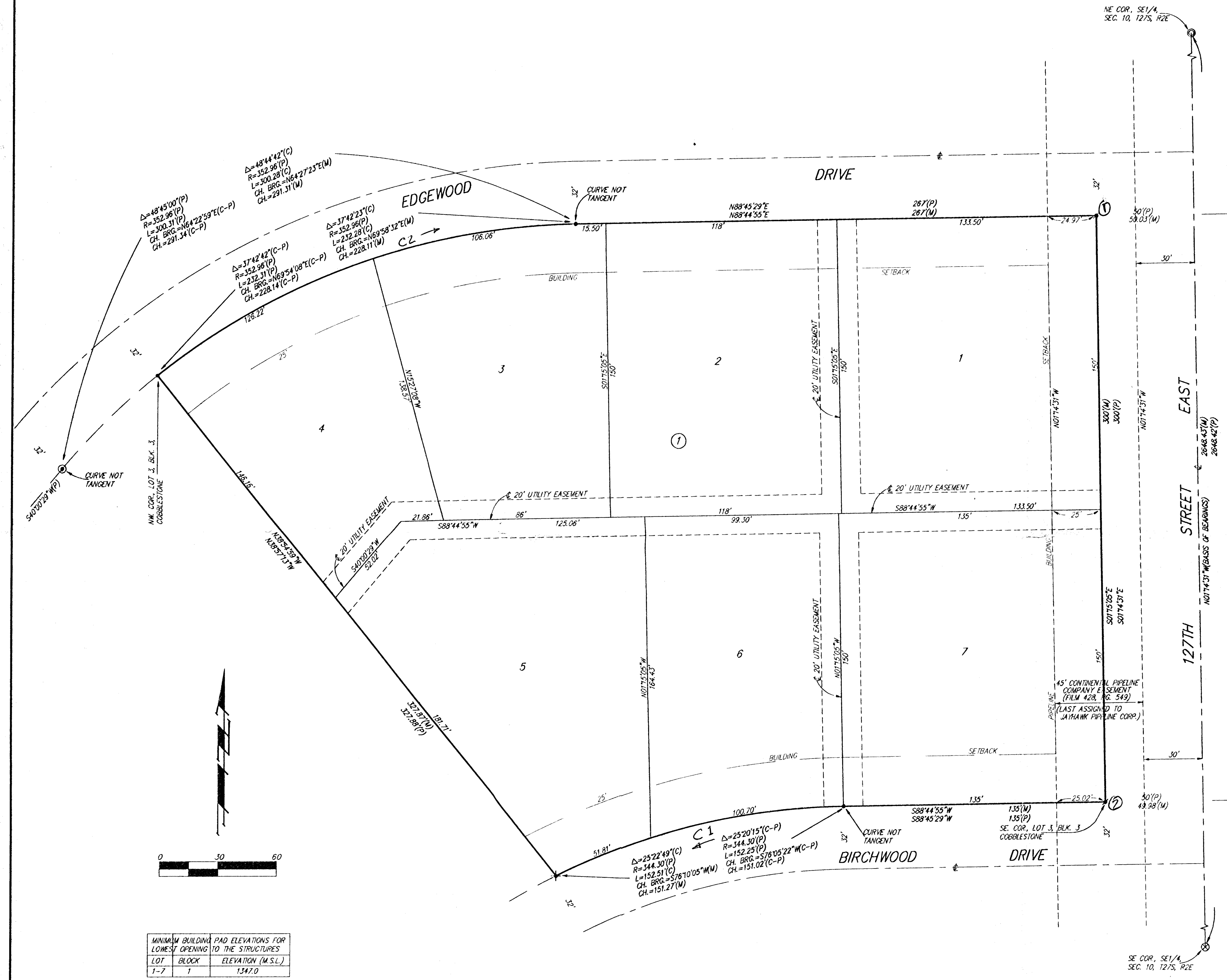


McCOY'S COBBLESTONE

AN ADDITION TO SEDGWICK COUNTY, KANSAS



State of Kansas) SS We, Baughman Company, P.A., Surveyors in
Sedgwick County) aforesaid County and State do hereby certify that we have surveyed
and platted "McCOY'S COBBLESTONE", an Addition to Sedgwick County,
Kansas, and that the accompanying plat is a true and correct exhibit
of the property surveyed, described as and being a replat of Lot 3,
Block 3, Cobblestone, an Addition to Sedgwick County, Kansas.

All being situated in the SE1/4 of Sec. 10, Twp. 27-S, R-2-E
of the 6th P.M., Sedgwick County, Kansas.

Existing public easements and dedications being vacated by virtue
of K.S.A. 12-512(b).
Baughman Co., P.A.

Michael D. Conroy 716-384-4771 Surveyor
Michael G. Conroy

Know all men by these presents that we,
the undersigned, have caused the land in the surveyors certificate
to be platted into Lots and a Block to be known as "McCOY'S
COBBLESTONE", an Addition to Sedgwick County, Kansas. The utility
easements are hereby granted as indicated for the construction and
maintenance of all public utilities. All abutters rights of access to
or from 127th Street East over and across the east line of Lots 1
and 7, Block 1, are hereby granted to the appropriate governing body.
The Minimum Building Pad Elevations for the lowest opening to the
structures on all Lots shall be 1347.0 M.S.L.

Hal W. McCoy Nancy McCoy

State of Kansas) SS The foregoing instrument acknowledged be-
fore me, this 28th day of July, 1991, by Hal W. McCoy
and Nancy McCoy, husband and wife.

DEBRA J. WARD Notary Public
DEBRA J. WARD
My App'l. Exp. Dec. 23, 2000

We, the undersigned, holders of a mortgage
on the above described property, do hereby consent to this plat of
"McCOY'S COBBLESTONE", an Addition to Sedgwick County, Kansas.
Intrust Bank, N.A.

BRUCE A. LONG SVP
BRUCE A. LONG (Title)

State of Kansas) SS The foregoing instrument acknowledged be-
fore me, this 28th day of July, 1991, by
Bruce A. Long, Vice President of Intrust Bank, N.A.,
on behalf of the bank.

WANDA K. JASNOSKI Notary Public
WANDA K. JASNOSKI
My App'l. Exp. 1-14-98

This plat of "McCOY'S COBBLESTONE,"
an Addition to Sedgwick County, Kansas has been submitted to
and approved by the Wichita, Sedgwick County Metropolitan Area
Planning Commission, Wichita, Kansas.

Dated this ___ day of _____, 199__
Wichita-Sedgwick County Metropolitan Area Planning Commission

John C. Frye Chairman
Marvin S. Krout Secretary

This plat approved and all dedications
shown hereon accepted by the City Council of the City of Wichita,
Kansas, this ___ day of _____, 199__

Bob Knight Mayor
Pat Burnett City Clerk

This plat approved and all dedications
shown hereon accepted by the Board of Commissioners of
Sedgwick County, Kansas, this ___ day of _____, 199__

Thomas R. Winters Chairman
Paul W. Hancock Chair Pro-Tem
Betsy Swin Commissioner
Melody C. Miller Commissioner
Mark F. Schroeder Commissioner
James Alford County Clerk

Entered on transfer record this ___ day
of _____, 199__

James Alford County Clerk

State of Kansas) SS This is to certify that this plat has been
filed for record in the office of the Register of Deeds, this ___ day
of _____, 199__, at ___ o'clock ___ M., and is duly
recorded.

Larry Consolver Register of Deeds
Michael D. Hurr Deputy

BENCHMARK:
"C" CUT ON TOP OF CURB AT NORTH END OF THE
NORTHEAST CURB RETURN AT EDGEWOOD DRIVE AND
WOODRIDGE DRIVE, ADJACENT TO THE SOUTHWEST
CORNER OF LOT 3, BLOCK 1, COBBLESTONE ADDITION,
SEDGWICK COUNTY, KANSAS.
ELEVATION = 1344.42 M.S.L.

- LEGEND:
- = #4 REBAR W/ "BAUGHMAN" CAP (SET)
 - = #5 REBAR (FOUND)
 - ⊙ = #4 REBAR (FOUND)
 - ⊕ = #4 REBAR W/ "BAUGHMAN" CAP (FOUND)
 - ⊕ = 3/4" IRON W/ "PEC" CAP (FOUND)
 - ⊕ = 1/2" IRON IN THIMBLE (FOUND)

