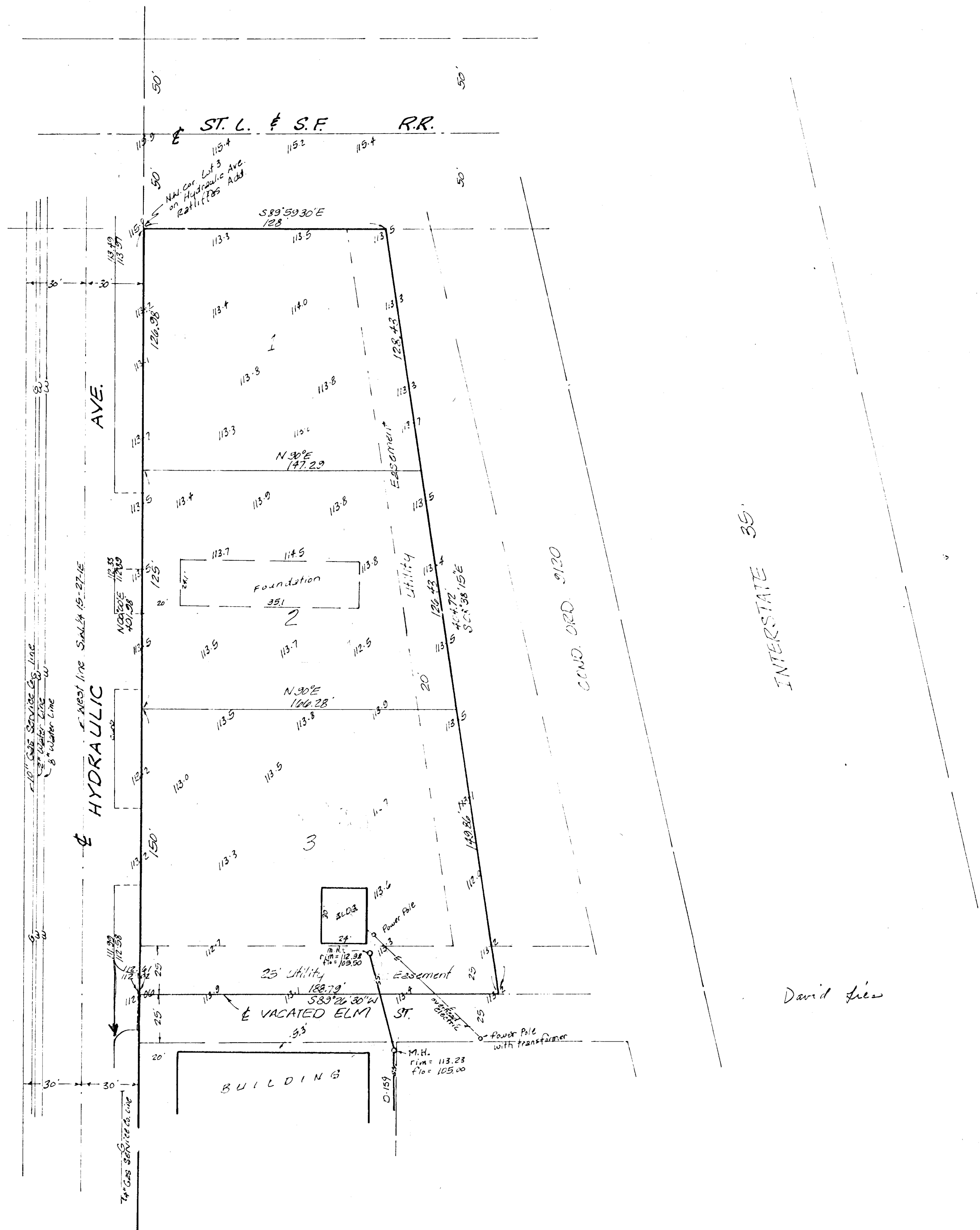


Bench mark:  
 19" in Mahan in centerline  
 of walk north at the NW  
 corner of Minneapolis and  
 13th St.  
 Elevation = 118.97 City Datum

D.159



SKETCH PLAT  
 MCGINTY ADDITION

PART OF LOTS 3, 4, 5, 6, 7, 8, 9, 10, 11, & 12,  
 ON HYDRAULIC AVE. & ALL OF LOTS 13, 14,  
 15, 16, 17, & 18 AND PART OF LOTS 19 & 20 ON  
 ELM ST. IN RATLIFFES ADD. TO WICHITA  
 SEQUOIA COUNTY, KANSAS, TOGETHER WITH  
 THAT PART OF VACATED ELM ST. ADJ. ON THE SOUTH

OWNER:  
 LEONARD E. MCGINTY