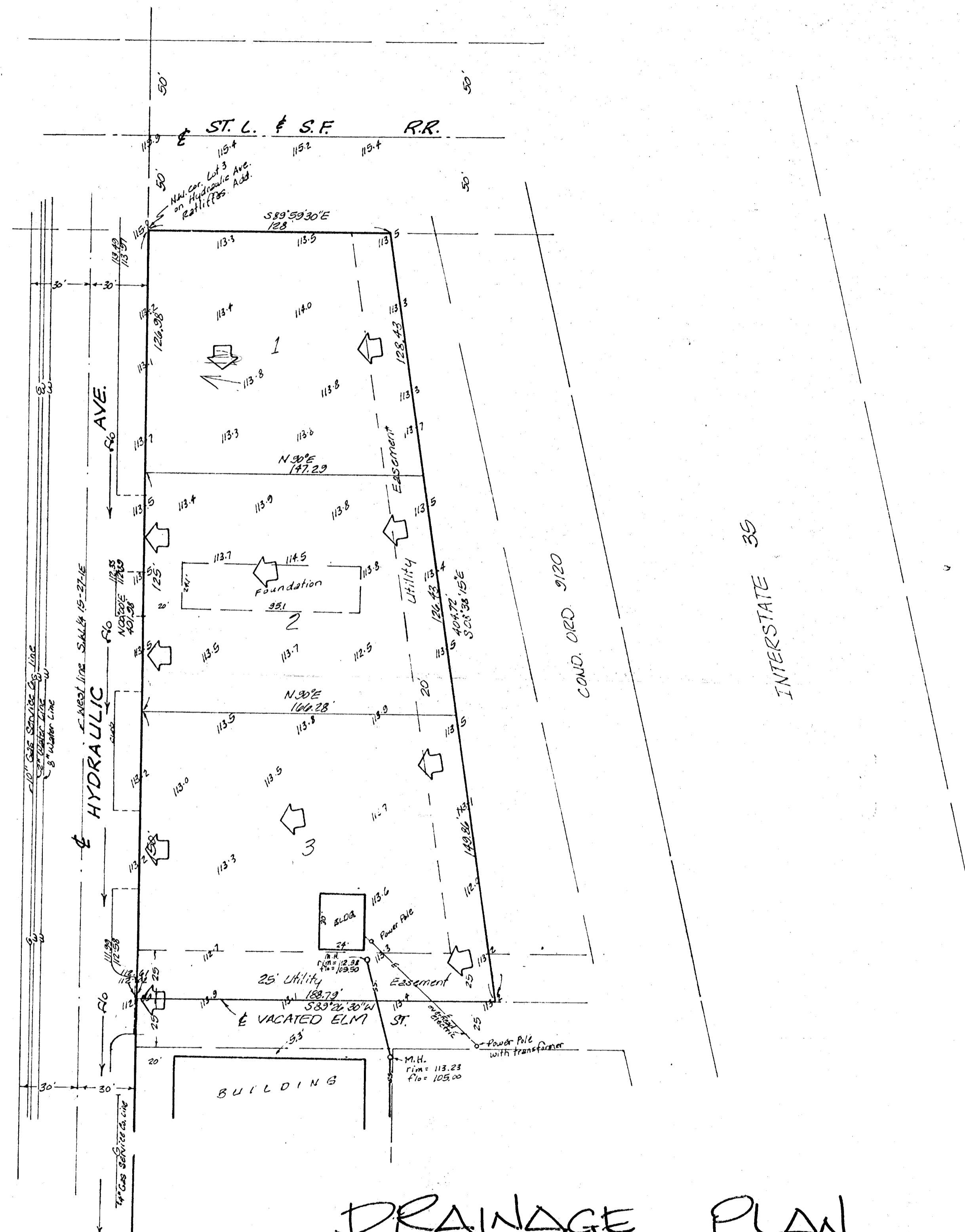




Bench mark:  
 7' in Mahan in centerline  
 of walk north at the NW  
 corner of Minneapolis and  
 13th St.  
 Elevation = 119.97 City Datum



# DRAINAGE PLAN

SKETCH PLAT  
**McGINTY ADDITION**  
 PART OF LOTS 3, 4, 5, 6, 7, 8, 9, 10, 11, & 12,  
 ON HYDRAULIC AVE. & ALL OF LOTS 13, 14,  
 15, 16, 17, & 18 AND PART OF LOTS 19 & 20 ON  
 ELM ST. IN RATLIFES ADD TO WICHITA  
 SEDGWICK COUNTY, KANSAS, TOGETHER WITH  
 THAT PART OF VACATED ELM ST. ADJ. ON THE SOUTH  
 OWNER: LEONARD E. McGINTY

1/19/02