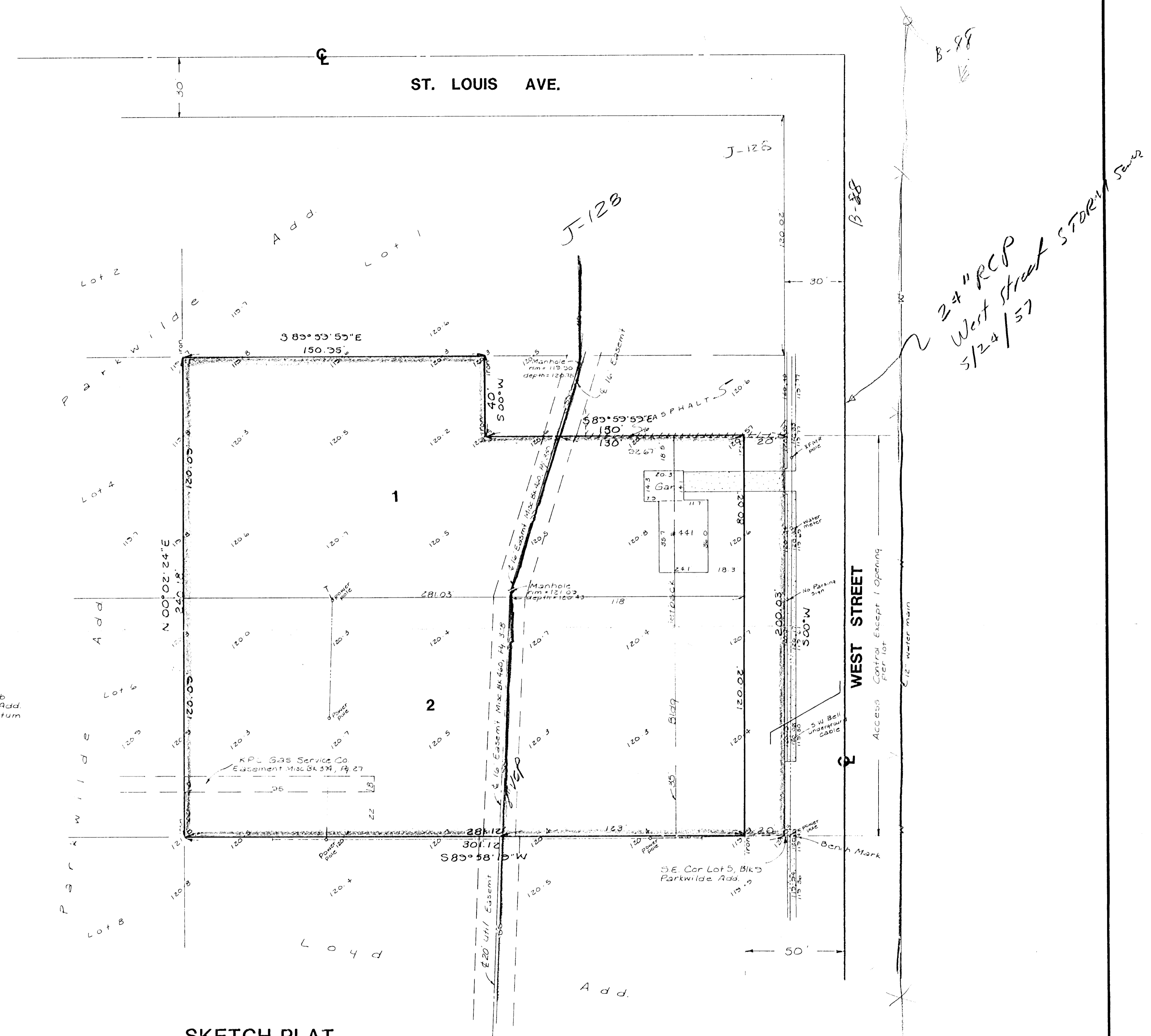


1" = 30'

N

Bench Mark
 10" cut on top of curb
 NE Corner Lloyd's Add.
 Elev. = 120.0 City Datum



Handwritten: 24" RCP
 West Street Storm Sewer
 5/24/57

**SKETCH PLAT
 McPHERSON ADDITION**

LOT 3, EXCEPT THE NORTH 40 FEET OF THE EAST 150 FEET THEREOF
 ALL OF LOT 5, BLOCK 9, PARKWILDE ADDITION

OWNERS:
McPHERSON COLLEGE
 JAMES M. DODSON- VICE.PRES.
WESTWAY CAR WASH, INC.
 HUGH MOXLEY - PRES.

BAUGHMAN COMPANY, P.A.
 SURVEYING & ENGINEERING
 316.262-7271 • 315 ELLIS • WICHITA, KANSAS 67211

24 Feb 1957