

YUNG DESIGN GROUP

BRANSON OFFICE - 1821 S. BRANSON BLVD. BRANSON, MO 65616  
WICHITA OFFICE - 434 N. OLIVER ST. WICHITA, KS 67208  
PH: 316-685-6677 FAX: 316-685-6208

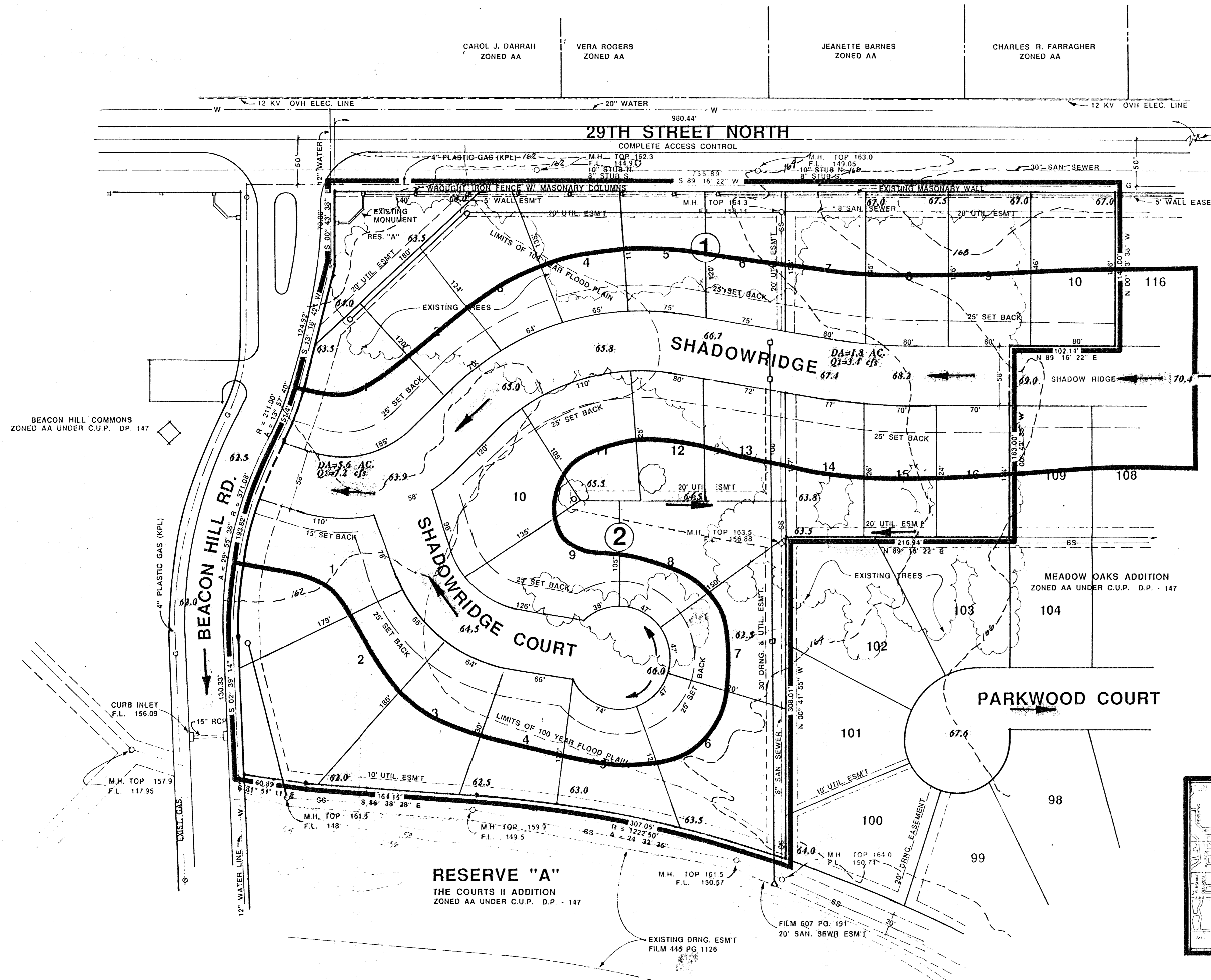
DATE: SEPT. 21, 1994

REV.

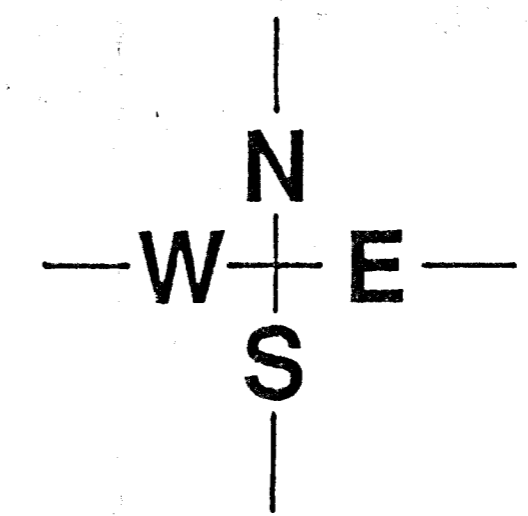
SHEET TITLE

PROJECT

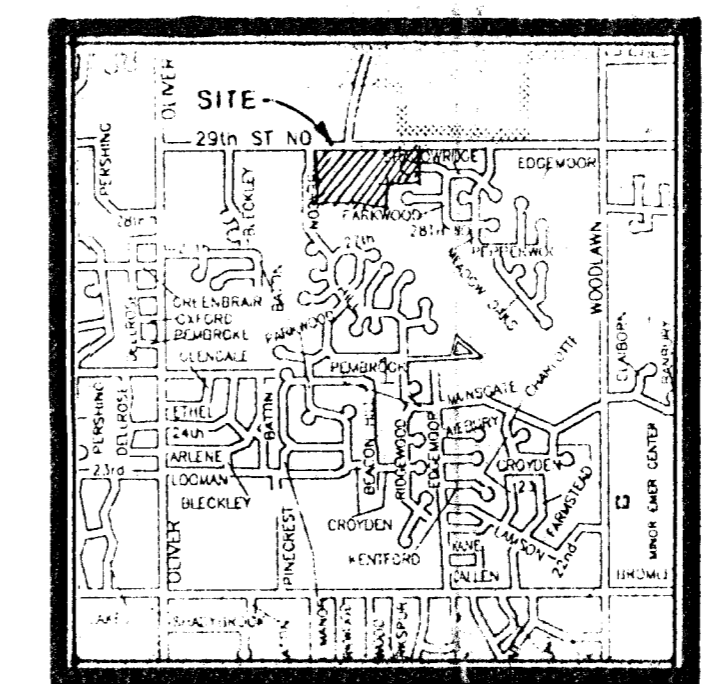
PROJECT NO.



- NOTES:**
1. BENCHMARK - " " CUT ON S.E. CORNER OF R.C.B ON BEACON HILL ROAD AND RESERVE "A" - ELEV. - 162.93.
  2. A DRAINAGE CONCEPT PLAN SHALL BE PREPAED AND SUBMITTED TO THE CITY ENGINEER BY POE AND ASSOCIATES.
  3. RESERVE "A" SHALL PERMIT LANDSCAPING, ENTRY MONUMENTS, IRRIGATION, WALKS AND UTILITIES CONFINED TO EASEMENTS.
  4. CONTOURS ARE PLOTTED AT TWO FOOT INTERVALS AND ARE BASED ON CITY DATUM.
  5. CITY OF WICHITA STD. BM DISC. AT 29TH & EDGEMOOR. 37' N. & 5.5' E. OF 1/4 SECTION CORNER. ELEV. 172.384
  6. CITY OF WICHITA STD. BM DISC. AT 29TH STREET N. & OLIVER. 39' N. & 33' E. OF CENTERLINE BOTH. ELEV. 159.684
  7. ALL PROPERTY WITHIN LIMITS OF PLAT IS WITHIN THE BEACON HILL C.U.P.



SCALE: 1" = 50'  
CONTOUR INTERVAL = 2'



LOCATION MAP  
NO SCALE

PRELIMINARY PLAT (REPLAT OF A PORTION OF MEADOW OAKS ADDITION LOTS 110 - 115 BLK. 2)

# MEADOW OAKS 2ND ADDITION DRAINAGE CONCEPT

OWNER: 3 - AH INC., 455 N. MAIZE, W., KS 67212 Ph.# 722-2417

POE & ASSOCIATES OF KANSAS, INC.  
Consulting Engineers  
434 N. Oliver, Suite 110 Wichita, KS 67208 316/6854114