

**YUNG DESIGN GROUP**  
 BRANSON OFFICE • 1821 W. HIGHWAY 76, SUITE 7 • BRANSON, MO 65616  
 PH: 417-335-8235 • FAX: 417-335-8286  
 WICHITA OFFICE • 4012 E. 28TH STREET NORTH • WICHITA, KS 67220  
 PH: 316-683-5567 • FAX: 316-683-9296

DATE 8 - 5 - 1994

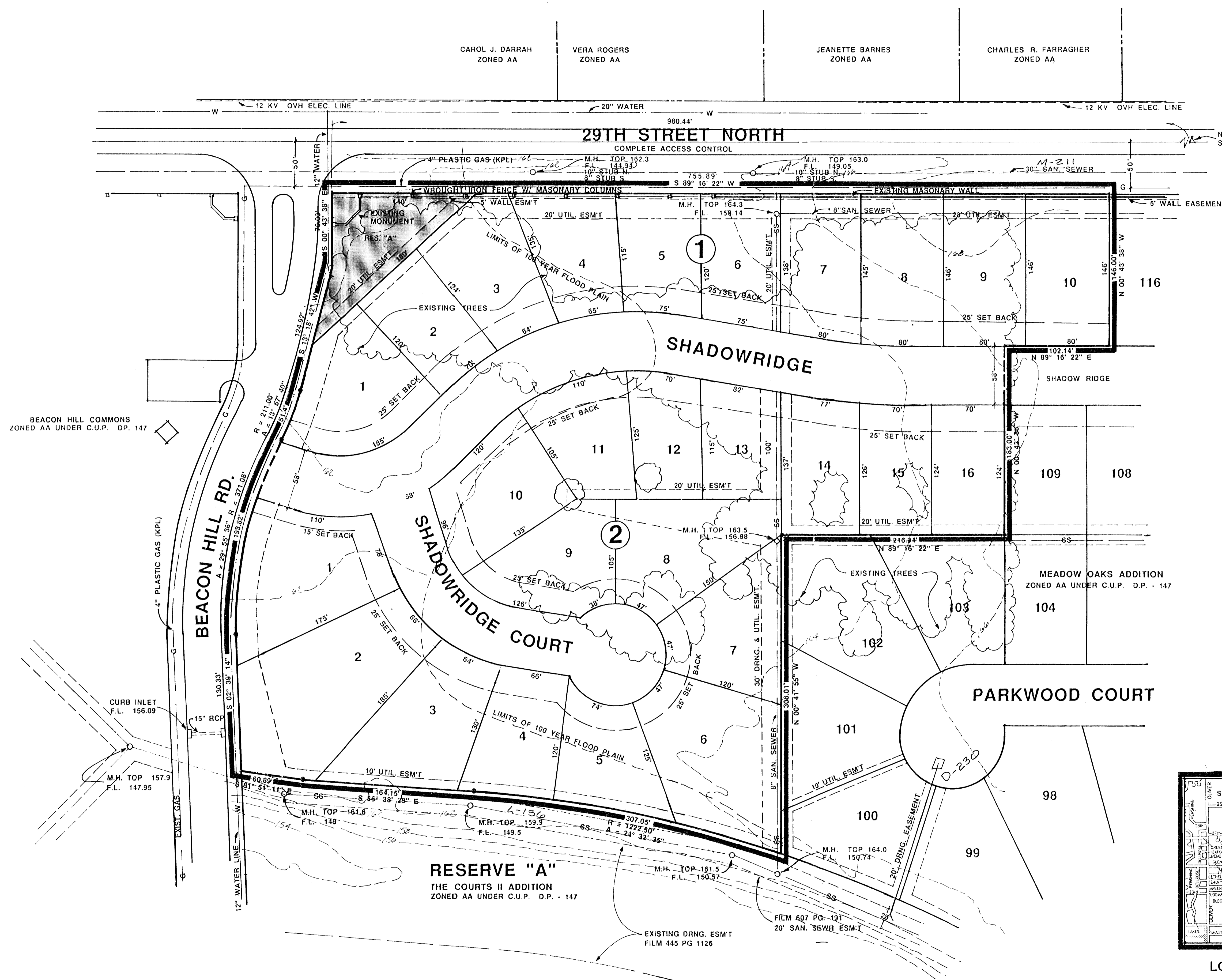
SHEET TITLE

PROJECT

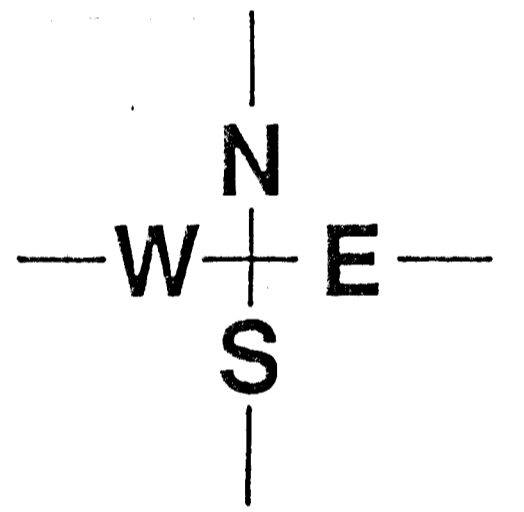
SHEET

PROJECT NO.

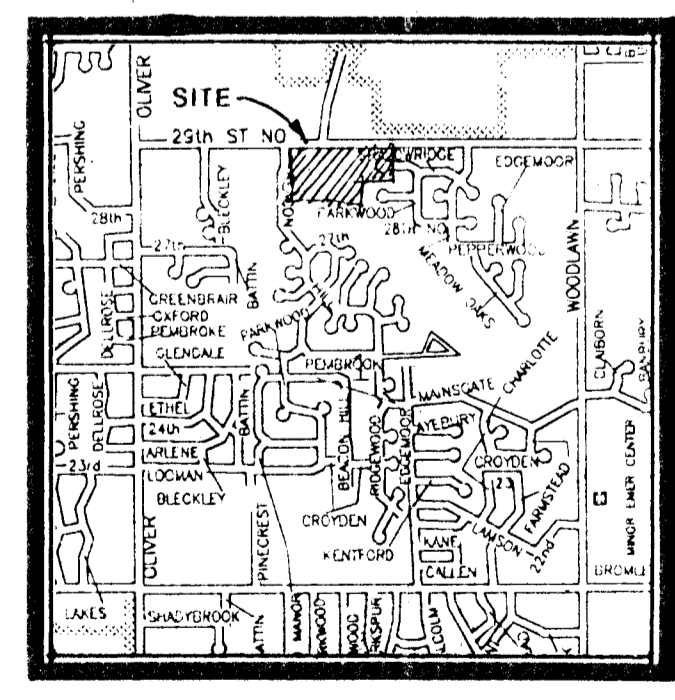
OF



- NOTES:**
1. BENCHMARK "A" CUT ON S.E. CORNER OF R.C.B ON BEACON HILL ROAD AND RESERVE "A" - ELEV. - 162.93.
  2. A DRAINAGE CONCEPT PLAN SHALL BE PREPARED AND SUBMITTED TO THE CITY ENGINEER BY POE AND ASSOCIATES.
  3. RESERVE "A" SHALL PERMIT LANDSCAPING, ENTRY MONUMENTS, IRRIGATION, WALKS AND UTILITIES CONFINED TO EASEMENTS.
  4. CONTOURS ARE PLOTTED AT TWO FOOT INTERVALS AND ARE BASED ON CITY DATUM.
  5. CITY OF WICHITA STD. BM DISC. AT 29TH & EDGEMOOR. 37' N. & 5.5' E. OF 1/4 SECTION CORNER. ELEV. 172.384
  6. CITY OF WICHITA STD. BM DISC. AT 29TH STREET N. & OLIVER. 39' N. & 33' E. OF CENTERLINE BOTH. ELEV. 159.684
  7. ALL PROPERTY WITHIN LIMITS OF PLAT IS WITHIN THE BEACON HILL C.U.P.



SCALE: 1" = 50'  
 CONTOUR INTERVAL = 2'



LOCATION MAP  
 NO SCALE

PRELIMINARY PLAT (REPLAT OF A PORTION OF MEADOW OAKS ADDITION LOTS 110 - 115 BLK. 2)

# MEADOW OAKS 2ND ADDITION

OWNER: 3 - AH INC., 455 N. MAIZE, W., KS 67212 Ph.# 722-2417

SS M-241  
 L-1516  
 SWS D-230