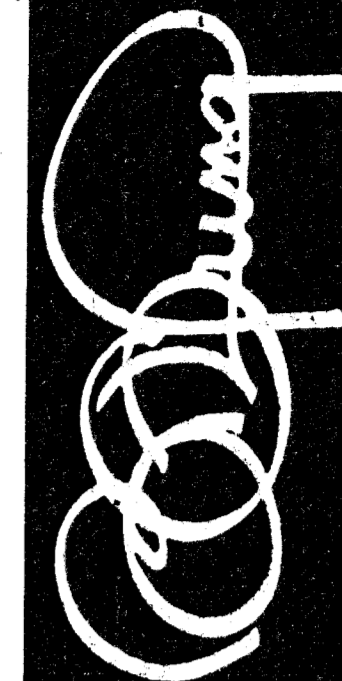


BRIARWOOD HOMEOWNERS
ASSOCIATION
UNPLATTED
UNDER C.U.P. D.P.-136

NOTES

- 1.) SETBACKS ARE AS PER BRIARWOOD RESIDENTIAL C.U.P., D.P.-136
 - 2.) DRAINAGE CONCEPT PLAN TO BE SUBMITTED TO CITY ENGINEER BY BAUGHMAN CO. P.A.
 - 3.) EXIST. 8" WATER LINE IS LOCATED AT THE INTERSECTION OF HICKORY AND 119TH ST. W. APPROXIMATELY 450' SOUTH OF PROPERTY LINE.
 - 4.) CONTOURS ARE AT 2' INTERVALS AND ELEVATIONS ARE USING M.S.L. DATUM.
 - 5.) RESERVE DESCRIPTIONS
RESERVE "A" & "B" SHALL BE RESERVED FOR LANDSCAPING, SIGNS, FLAG POLES, WALKS AND ENTRY FEATURES.
RESERVES "C" & "F" SHALL BE RESERVED FOR LANDSCAPING & UTILITIES CONFINED TO EASEMENTS.
RESERVES "E" SHALL BE RESERVED FOR LANDSCAPING, UTILITIES CONFINED TO EASEMENTS, ACCESS EASEMENT TO KENNY ST. & WOODEN BENCE ALONG PROPERTY LINE.
RESERVE "D" SHALL BE RESERVED FOR LANDSCAPING, UTILITIES, CONFINED TO EASEMENTS, WALKS, GAZEBOES, SWIMMING POOL WITH RESTROOMS, POOL AREA PARKING, RECREATIONAL EQUIPMENT & FOOTBRIDGES.
- BENCHMARK - 60 "D" NAIL IN HIGHLINE POLE 45" N.E. OF N.W. CORNER SEC.18, T27S, R1W.
- MINIMUM BUILDING PAD ELEVATIONS WILL BE ESTABLISHED AT THE TIME OF FINAL PLATTING FOR APPROPRIATE LOTS.

CARL JAAX JR. ETUX.
ZONED R-1



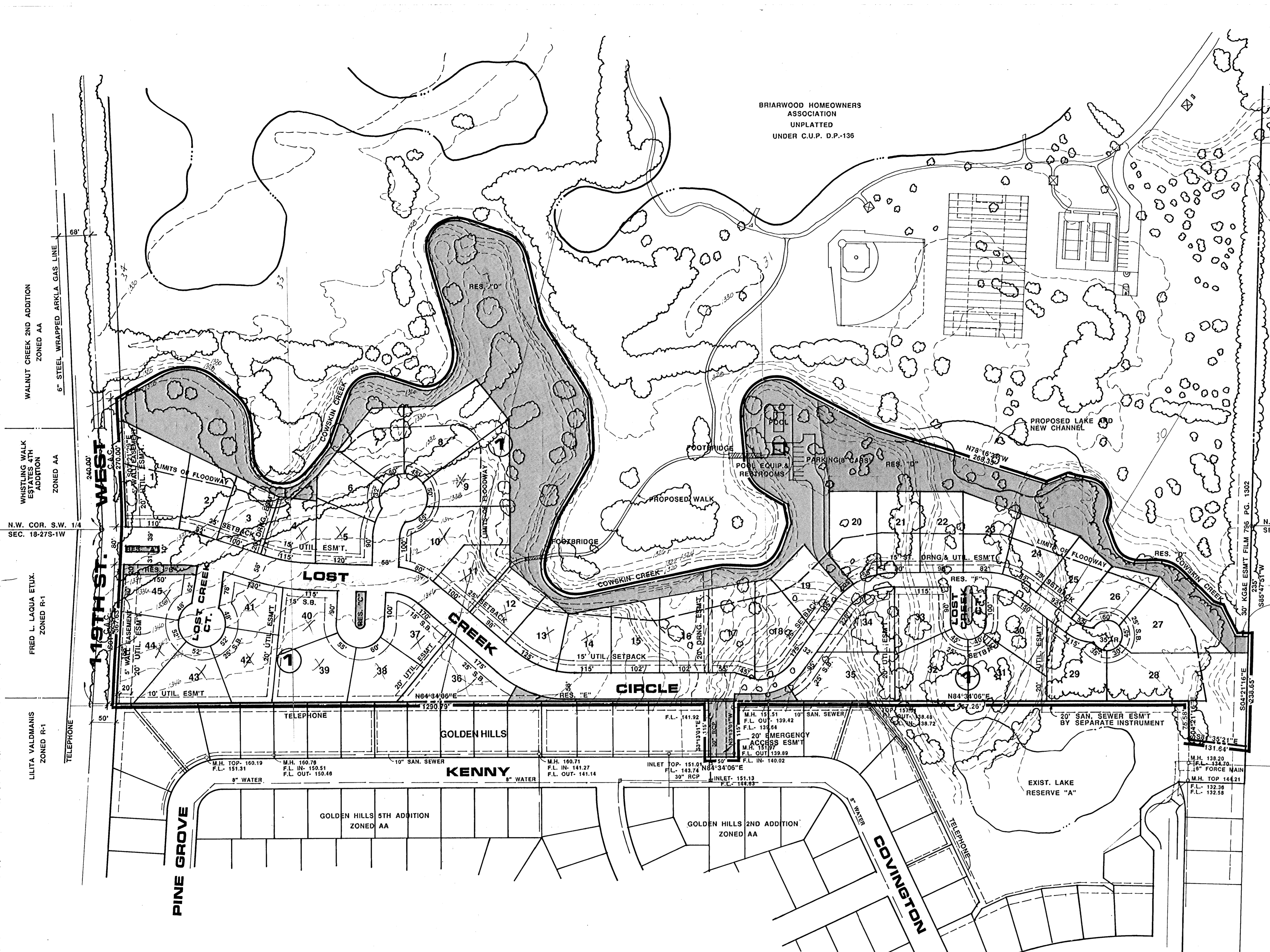
BILL G. YUNG DESIGN
412 E. 20TH STREET NORTH, WICHITA, KS 67220
316-883-5667

date 5 JULY 1989
rev. 15 JULY 1989

sheet title PRELIMINARY PLAT

project LOST CREEK ESTATES

sheet of



PRELIMINARY PLAT
LOST CREEK ESTATES

OWNER: JAY RUSSELL 443 N. MAIZE RD., WICHITA, KS. 67212 PH. 722-2417



TOTAL ACRES: 29.0

SCALE: 1"=100'

WALNUT CREEK 2ND ADDITION
ZONED AA
6" STEEL WRAPPED ARKLA GAS LINE

WHISTLING WALK
ESTATES 4TH
ADDITION
ZONED AA

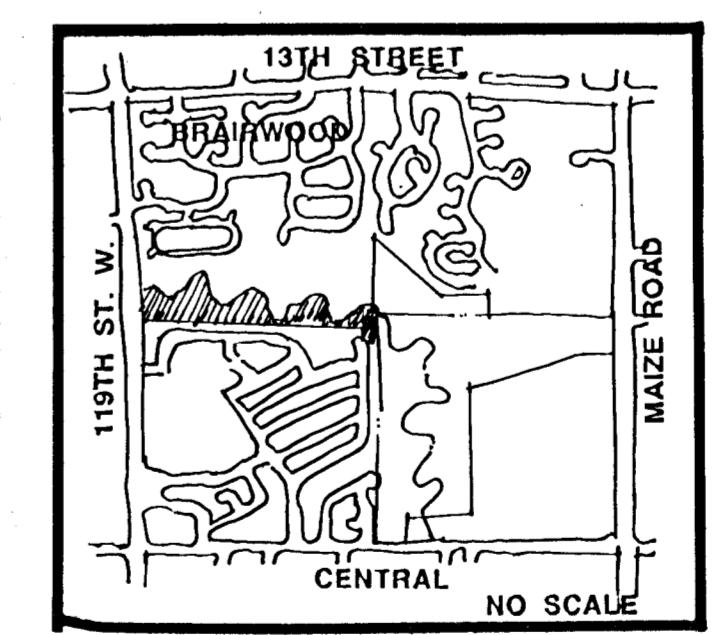
N.W. COR. S.W. 1/4
SEC. 18-27S-1W

FRED L. LAQUA ETUX.
ZONED R-1

LILITA VALDMANIS
ZONED R-1

N.E. COR. S.W.1/4
SEC. 18-27S-1W

35'
S85°47'51"W
SWANSON PARK
BOARD OF PARK COMMISSION



LOCATION MAP