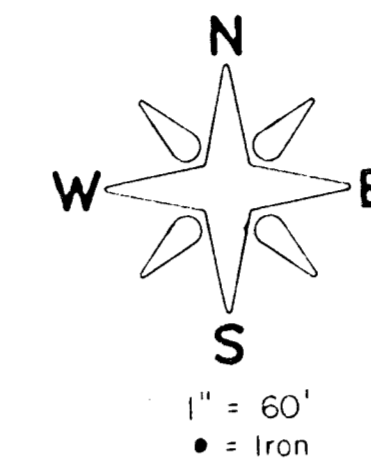
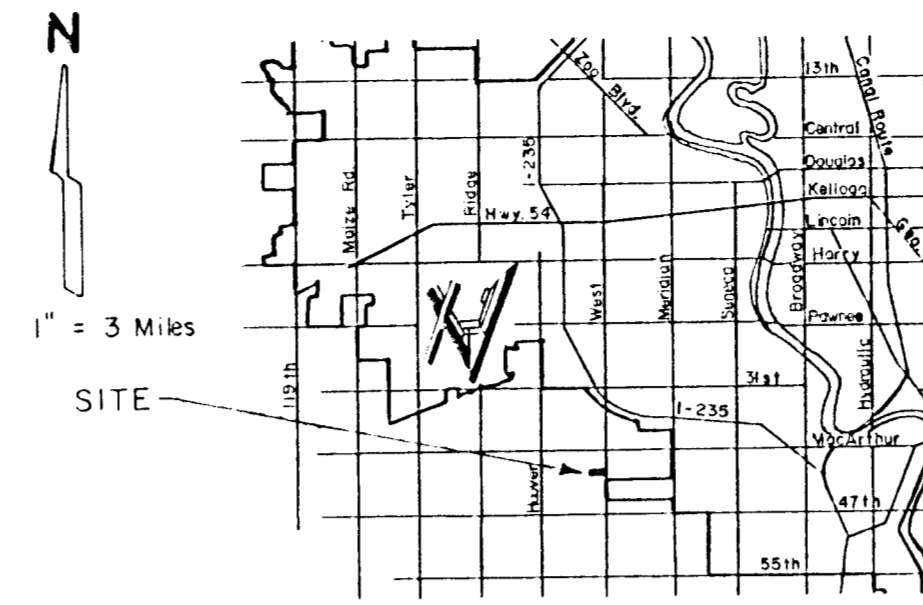


PRELIMINARY PLAT
of
LYNDE INDUSTRIAL ADDITION
SEDGWICK COUNTY, KANSAS

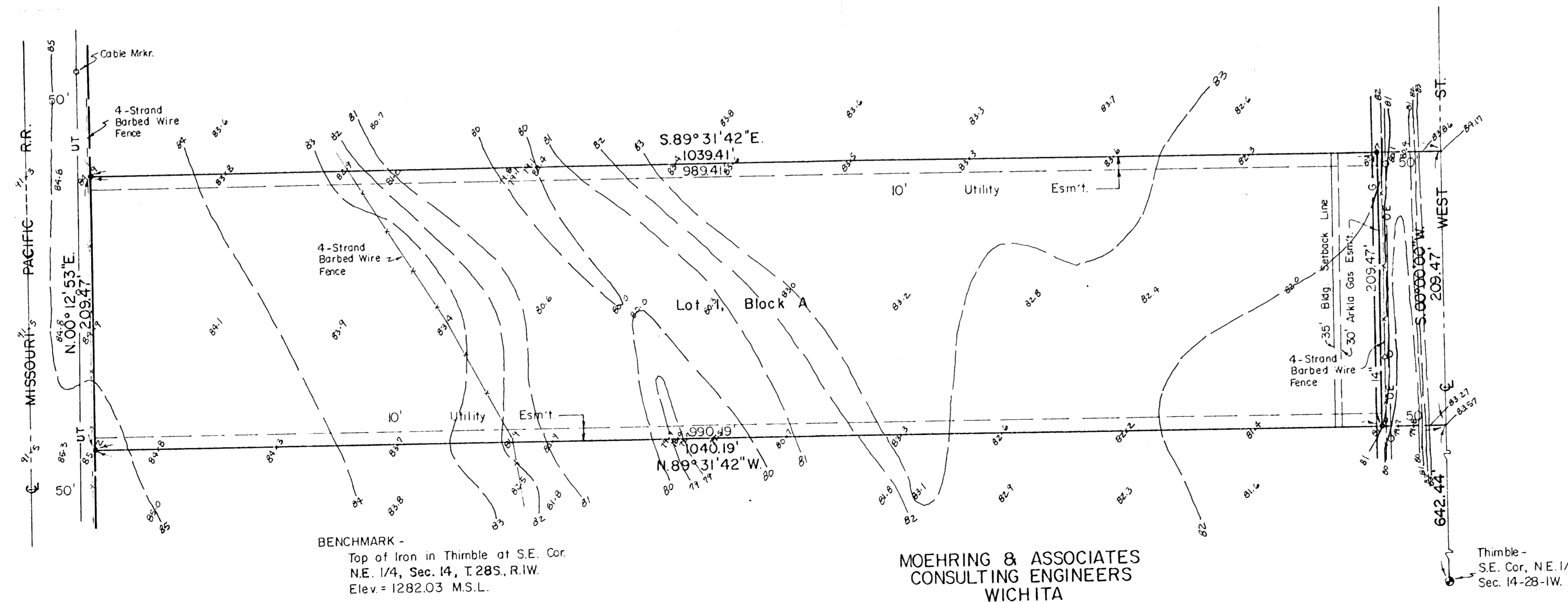
Legal Description -

The North 209.47' of the South 851.91' of the N.E. 1/4 of Section 14, Township 28S., Range 1W. of the 6th P.M., Sedgwick Co., Kansas, lying East of the Missouri Pacific Railroad Right of Way.



LEGEND

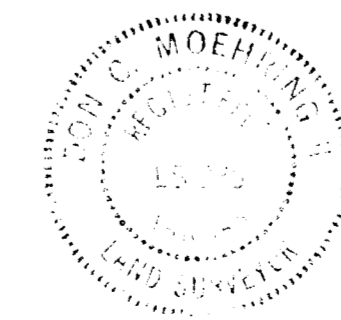
- OE = Overhead Electric
- PP = Power Pole
- G = Gas Main (Arkla Energy Resources)
- UT = Underground Telephone



BENCHMARK -
Top of Iron in Thimble at S.E. Cor.
N.E. 1/4, Sec. 14, T.28S., R.1W.
Elev. = 1282.03 M.S.L.

MOEHRING & ASSOCIATES
CONSULTING ENGINEERS
WICHITA

Thimble -
S.E. Cor., N.E. 1/4,
Sec. 14-28-1W.



NO SEWER AVAILABLE