

N.W. Cor. N.E. 1/4, Sec 24,  
T.25, R.1E, of 6th P.M.

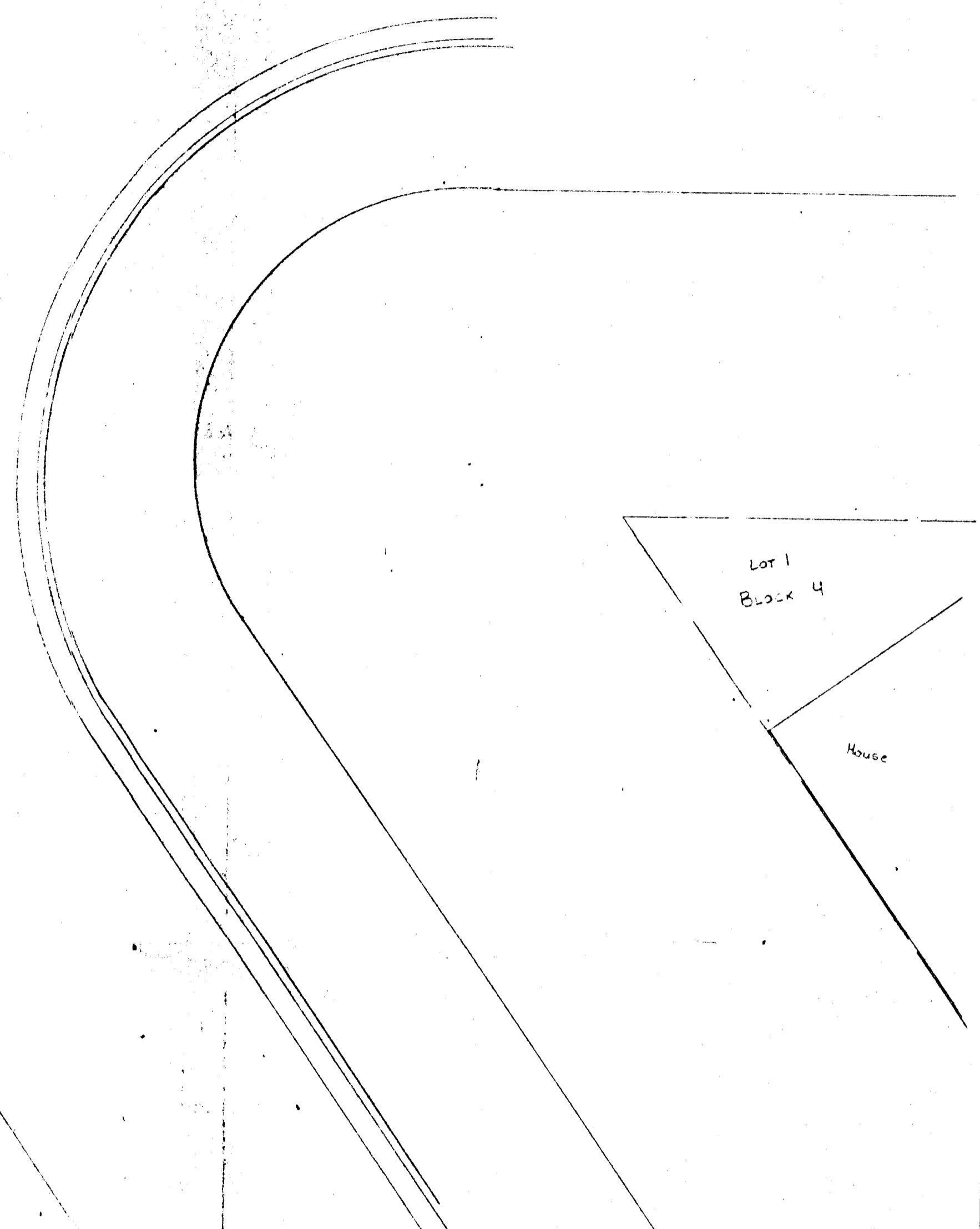
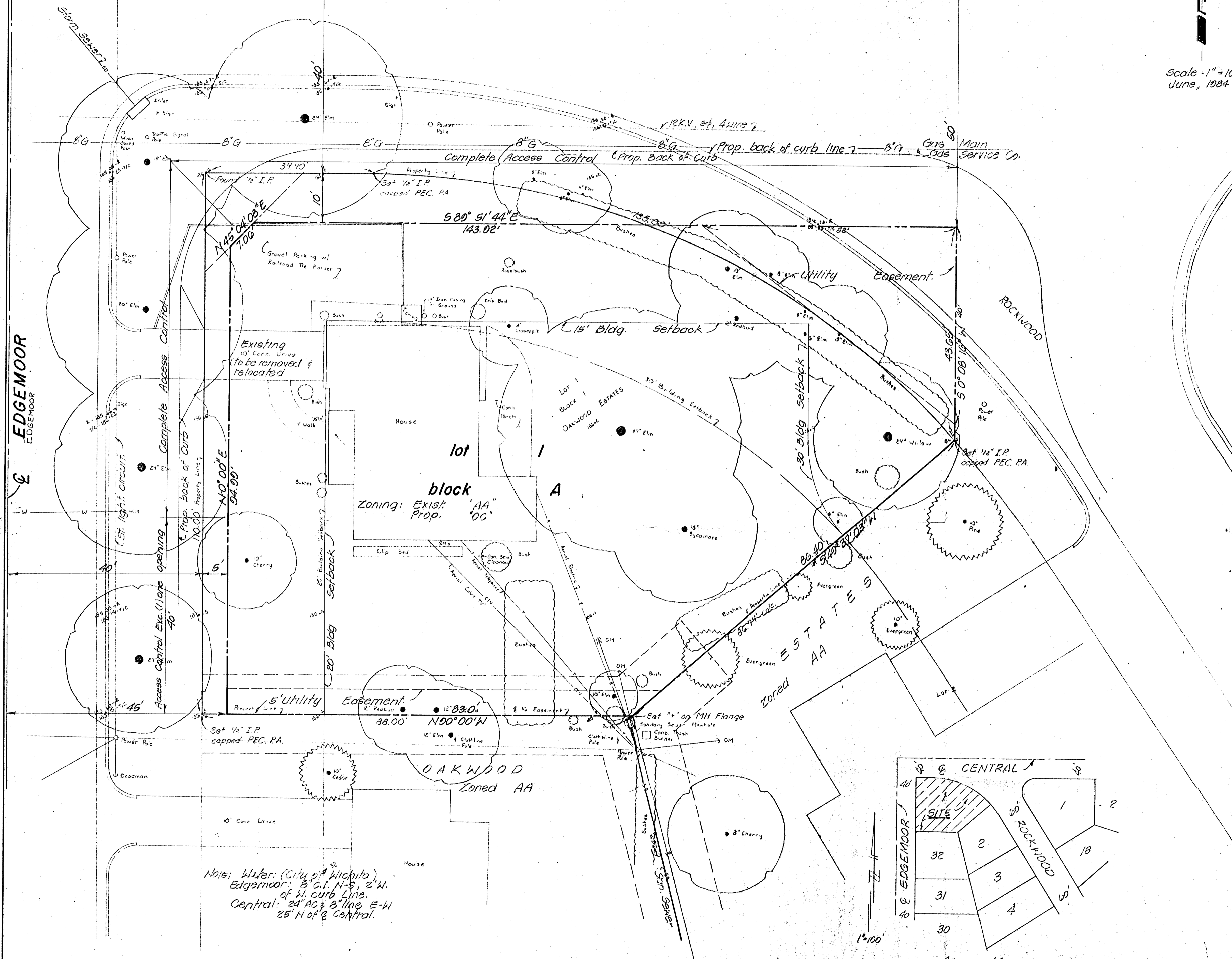
CENTRAL

CENTRAL AVE.

B.M. Brass rod in Conc. post  
38' N + 3.4' W of inter. of N & E  
of Central with W & Edgemoor.  
Elev. = 185.657 City Datum.

Topo Date: April 27, 1984

Scale - 1" = 10'  
June, 1984



**SKETCH PLAT**  
Preliminary Plat of  
**LUTHER ADDITION**  
Wichita, Sedgwick County, Kansas.

OWNER: L. O. Luther  
2020 E. 33rd St. North  
Wichita, Ks.

ENGINEER: P. E. C.  
1440 English  
Wichita, Ks.

Notes: Water: (City of Wichita)  
Edgemoor: 8" C.F. N-S, 2" W.  
of W. curb line.  
Central: 24" AC & 2" line E-W  
25' N of E Central.

