

POLO CLUB OFFICE PARK

OWNER: POLO CLUB OFFICE PARK PARTNERS
 c/o Stephen L. Clark
 P.O. Box 21080 Wichita, Ks. 67208

ENGINEER: PROFESSIONAL ENGINEERING CONSULTANTS, P.A.
 1440 English Wichita, Ks. 67211

M.E. COO, N.E. 1/4
 SEC. 18, T27S, R2E
 OF THE 8TH P.M.

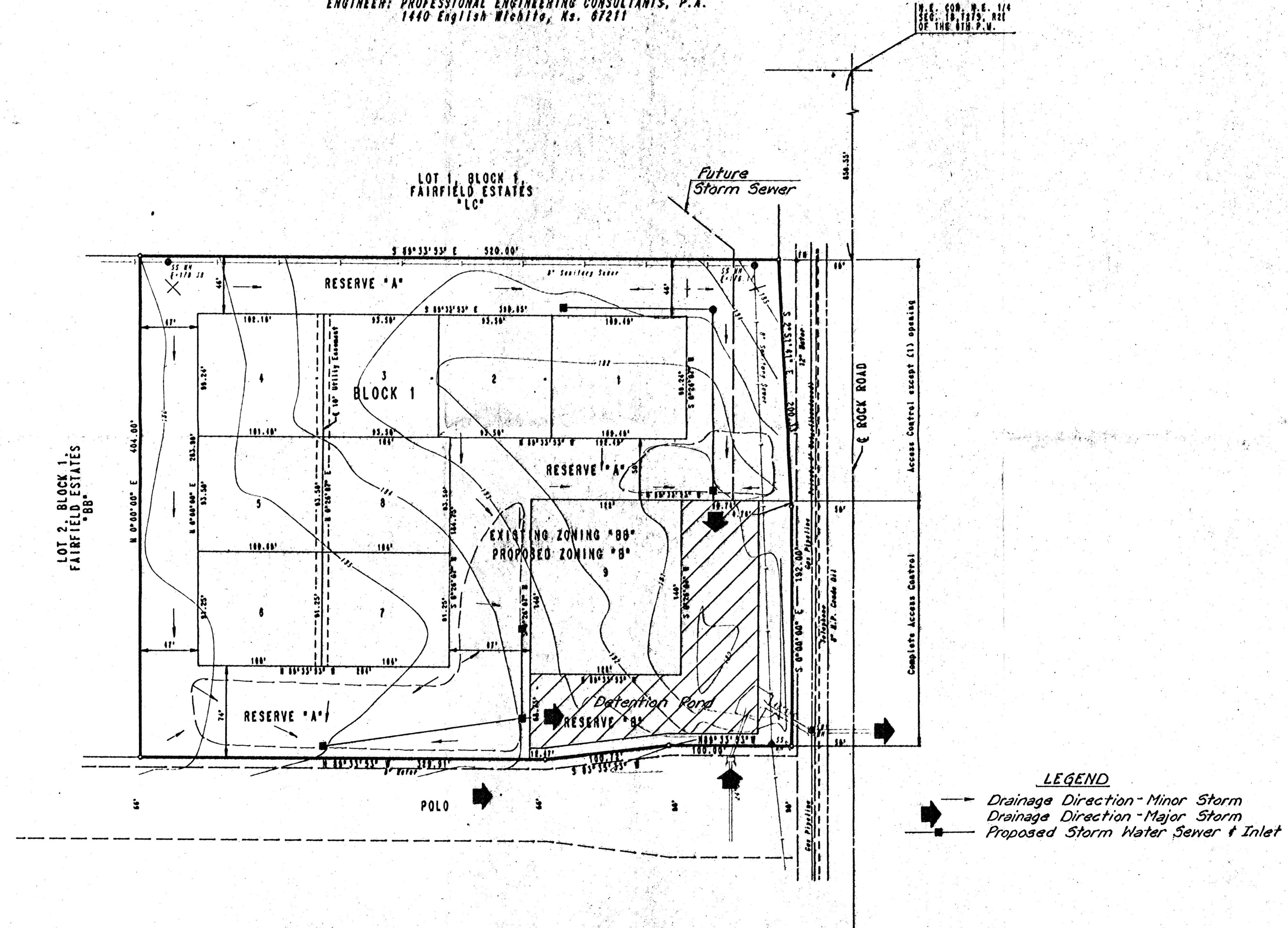
SCALE: 1" = 50'
 ○ = IRON SET
 TOPO JULY, 1988

D.M.-CHIS. "0" SOUTH END CURB RETURN WEST SIDE
 ROCK ROAD AT E. 174 CORNER SEC. 18, T27S, R2E.
 ELEV. = 179.18 CITY DATUM
 BUILDING SETBACKS AS PER C.U.P. DP-144

RESERVE "A" IS HEREBY PLATTED FOR THE CONSTRUCTION AND MAINTENANCE OF
 PUBLIC UTILITIES, LANDSCAPING, IRRIGATION SYSTEMS, DRAINAGE, PARKING,
 PRIVATE DRIVES, IDENTIFICATION SIGNS, AND WALLS AS REQUIRED BY
 C.U.P. DP-144.

RESERVE "B" IS HEREBY PLATTED FOR THE CONSTRUCTION AND MAINTENANCE
 OF SANITARY SEWER, LANDSCAPING, IRRIGATION SYSTEM, DRAINAGE, AND
 IDENTIFICATION SIGNS.

THE PRIVATE DRIVES WITHIN RESERVE "A" ARE TO PROVIDE ACCESS TO
 LOTS 1 THROUGH 9 INCLUSIVE, BLOCK 1.



LEGEND
 → Drainage Direction - Minor Storm
 → Drainage Direction - Major Storm
 ■ Proposed Storm Water Sewer & Inlet

Detention Pond
 Bottom Elev = 175.0
 Static Pool Elev = 177.75
 DWS₁₀₀ = 182.3