

PRELIMINARY PLAT OF POLO CLUB OFFICE PARK

OWNER: POLO CLUB OFFICE PARK PARTNERS
c/o Stephen L. Clark
P.O. Box 21080 Wichita, Ks. 67208

ENGINEER: PROFESSIONAL ENGINEERING CONSULTANTS, P.A.
1440 English Wichita, Ks. 67211

5263
D65
Lot 80 6115

N.E. COR. N.E. 1/4
SEC. 18, T27S, R2E
OF THE 6TH P.M.



SCALE: 1" = 50'
o = IRON SET
TOPO JULY, 1988

B.M. - CHIS. "D" SOUTH END CURB RETURN WEST SIDE
ROCK ROAD AT E. 1/4 CORNER SEC. 18; T27S, R2E.
ELEV. = 179.18 CITY DATUM

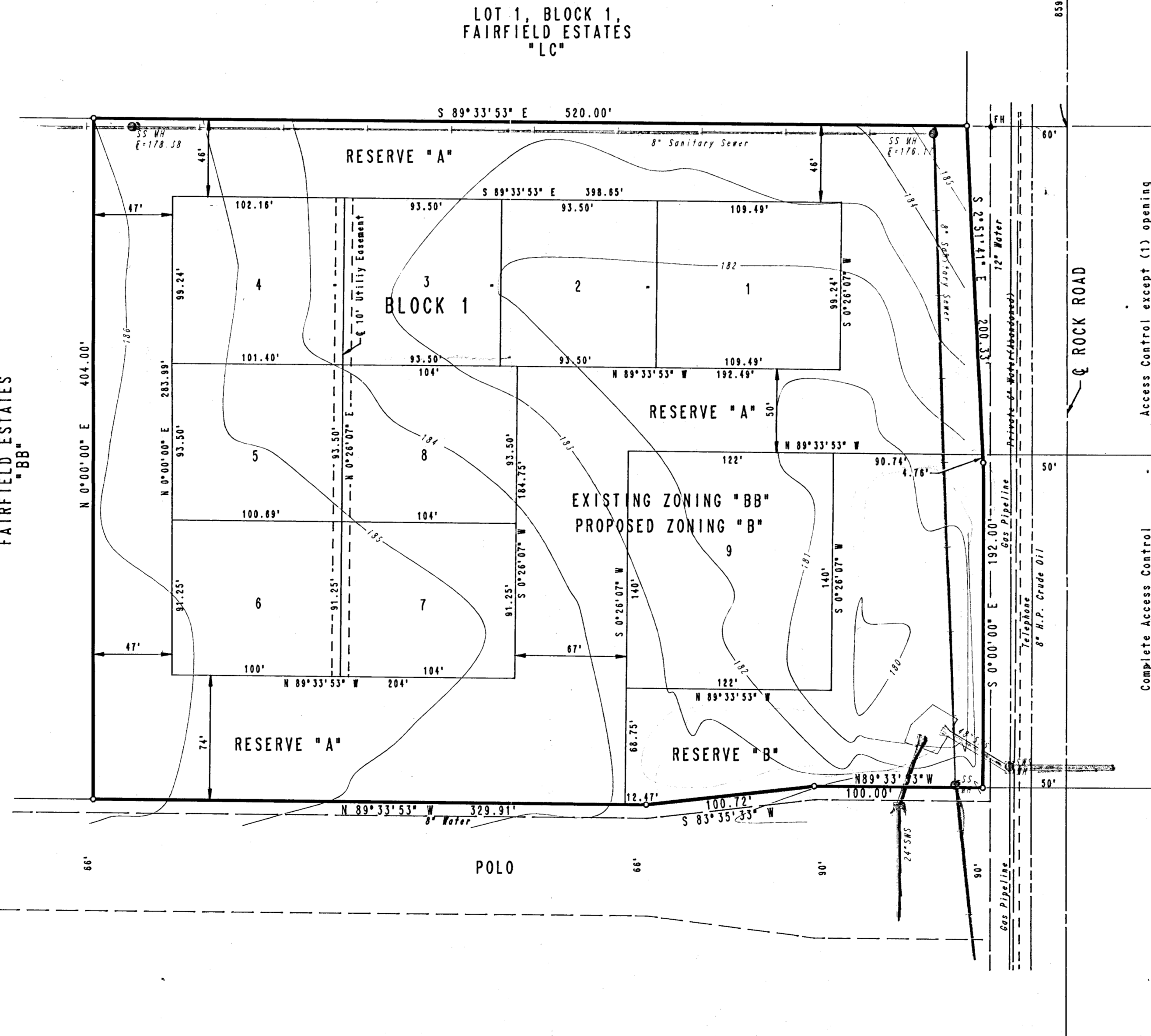
BUILDING SETBACKS AS PER C.U.P. DP-144

RESERVE "A" IS HEREBY PLATTED FOR THE CONSTRUCTION AND MAINTENANCE OF PUBLIC UTILITIES, LANDSCAPING, IRRIGATION SYSTEMS, DRAINAGE, PARKING, PRIVATE DRIVES, IDENTIFICATION SIGNS, AND WALLS AS REQUIRED BY C.U.P. DP-144.

RESERVE "B" IS HEREBY PLATTED FOR THE CONSTRUCTION AND MAINTENANCE OF SANITARY SEWER, LANDSCAPING, IRRIGATION SYSTEM, DRAINAGE, AND IDENTIFICATION SIGNS.

THE PRIVATE DRIVES WITHIN RESERVE "A" ARE TO PROVIDE ACCESS TO LOTS 1 THROUGH 9 INCLUSIVE, BLOCK 1.

LOT 2, BLOCK 1,
FAIRFIELD ESTATES
"BB"



Access Control except (1) opening

Complete Access Control