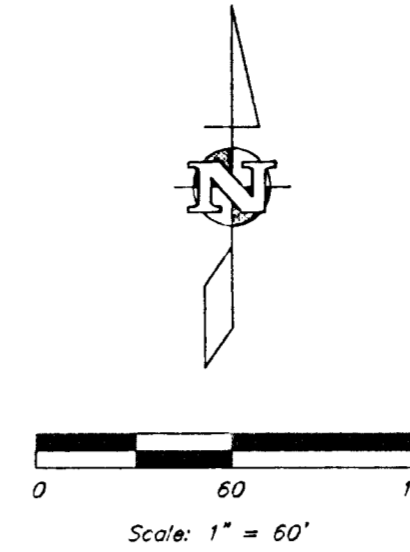
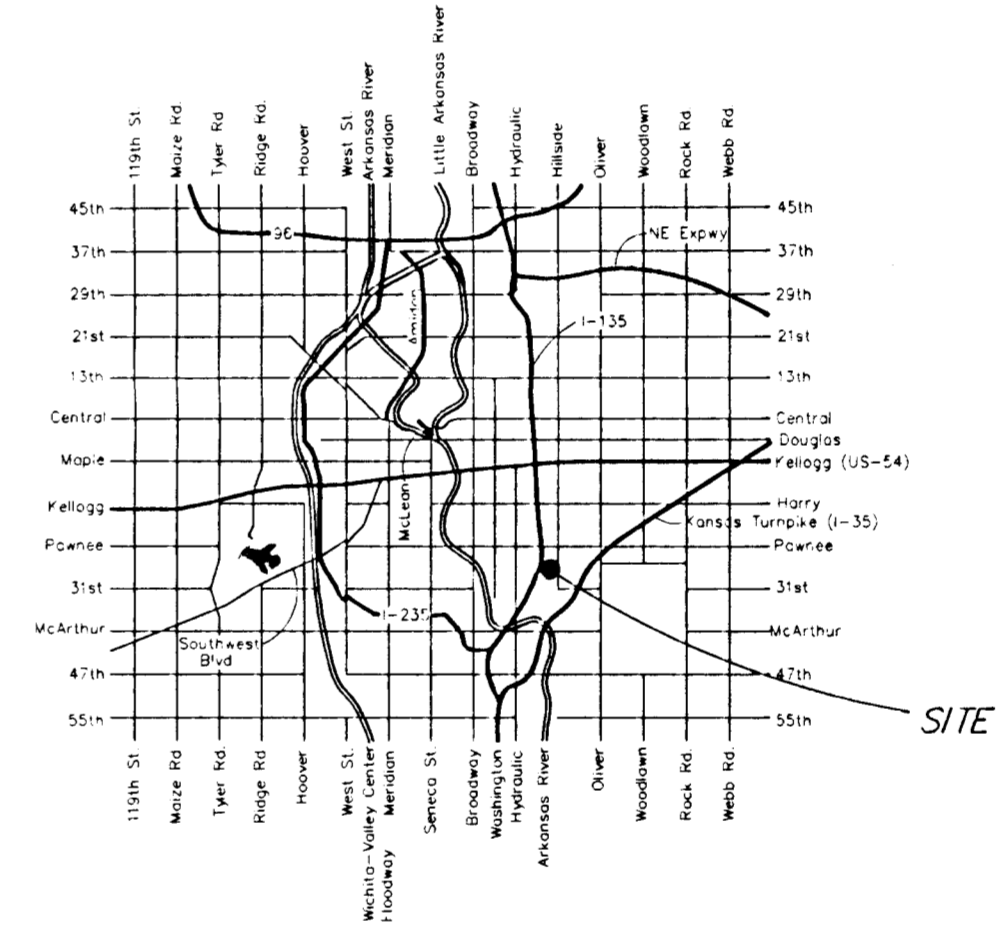
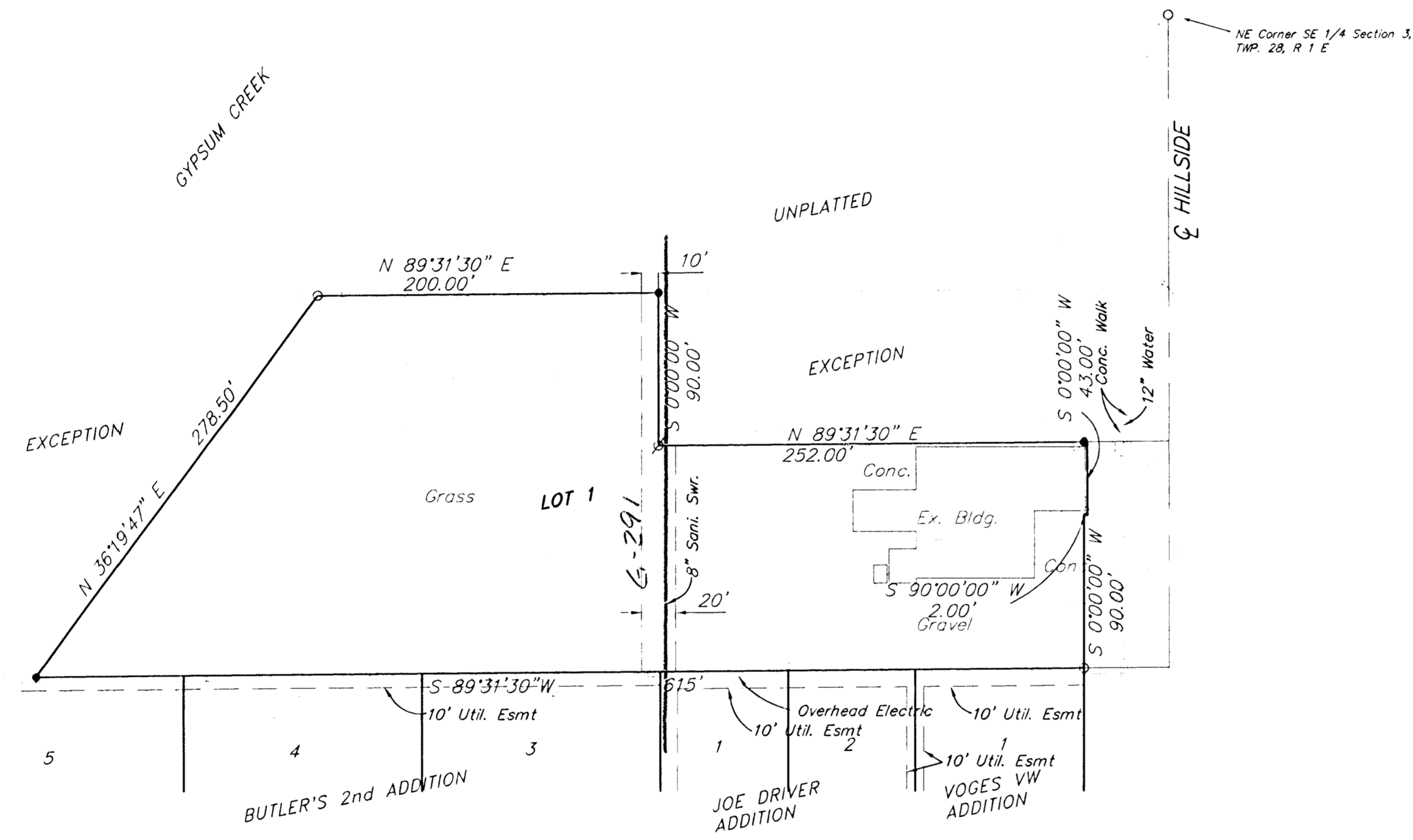


SKETCH PLAT
 PRECISION METALCRAFT ADDITION
 WICHITA, SEDGWICK COUNTY, KANSAS

BENCHMARK:
 City of Wichita Benchmark Disc
 NE Corner of Bridge at Hillside
 and Gypsum Creek
 Elev. = 1291.74 MSL (104.34 City Datum)



- LEGEND:**
- 1/2" Pipe Found
 - ⊕ 3/4" Iron Found
 - - Set 1/2" Rebar & Cap



LOCATION MAP

- NOTES**
1. Property is zoned LI
 2. Topo made February, 1997