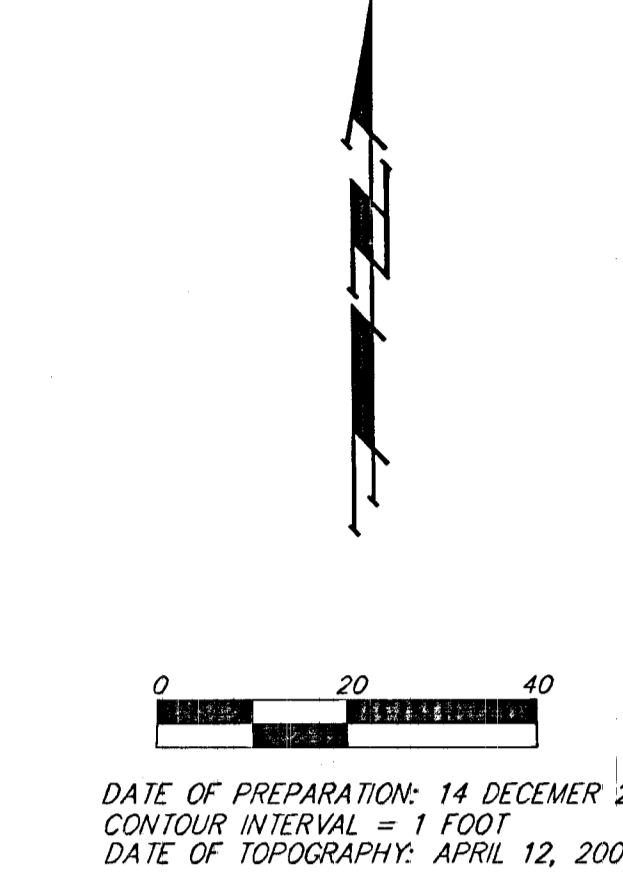
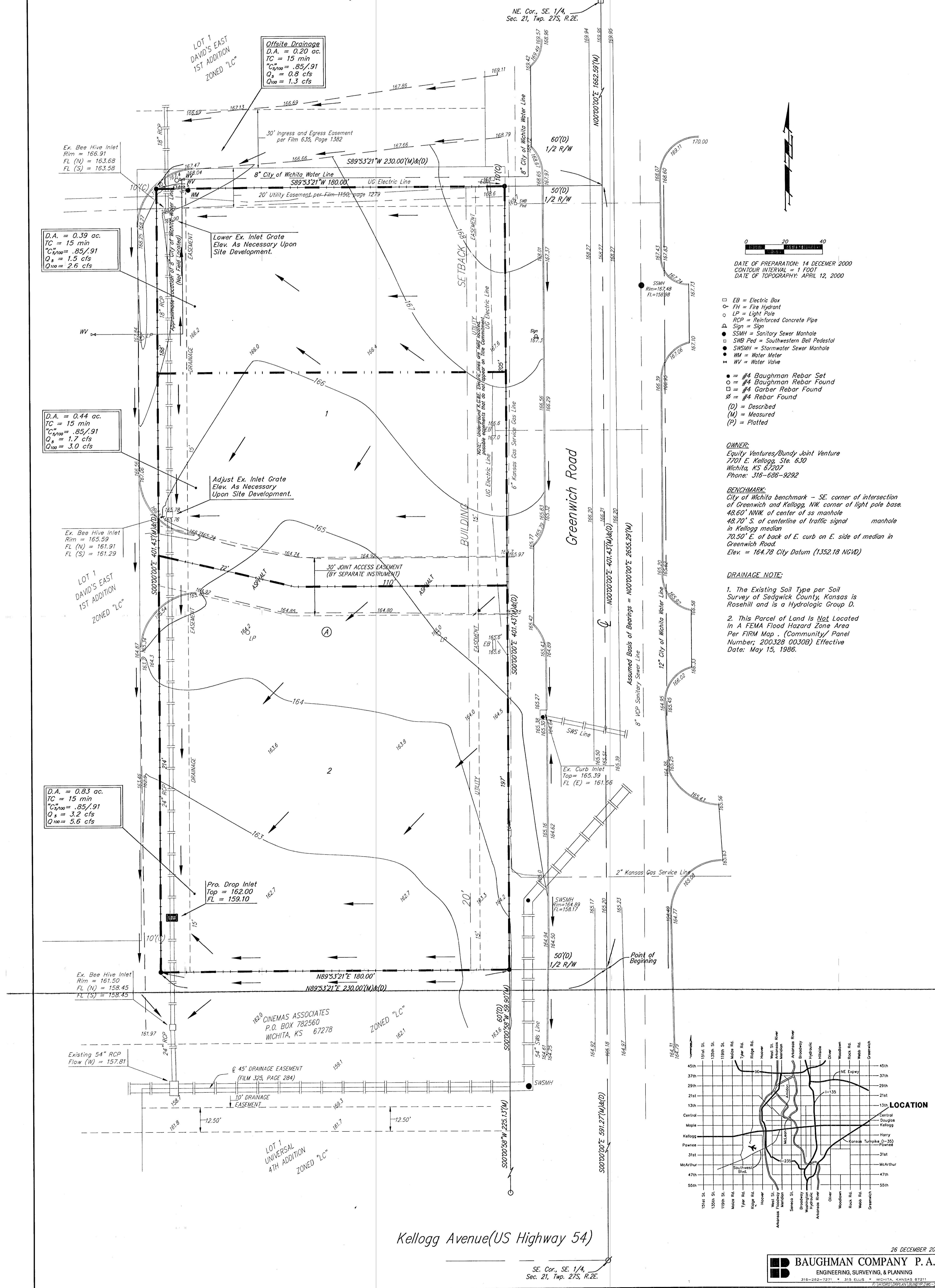


DRAINAGE PLAN PREMIER ADDITION WICHITA, SEDGWICK COUNTY, KANSAS



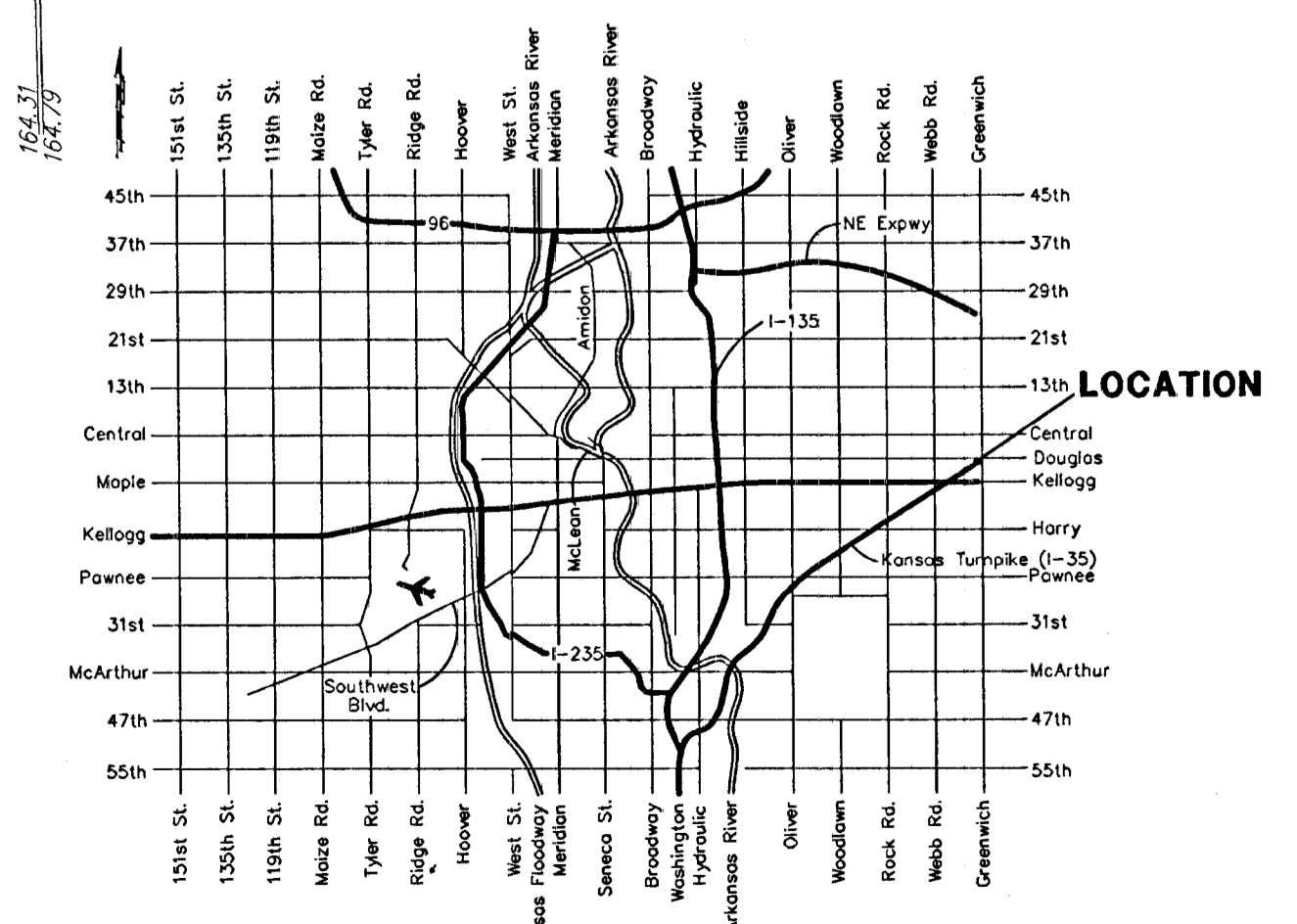
DATE OF PREPARATION: 14 DECEMBER 2000
CONTOUR INTERVAL = 1 FOOT
DATE OF TOPOGRAPHY: APRIL 12, 2000

- EB = Electric Box
- FH = Fire Hydrant
- LP = Light Pole
- RCP = Reinforced Concrete Pipe
- △ Sign = Sign
- SSMH = Sanitary Sewer Manhole
- SWSMH = Southwestern Bell Pedestal
- SWSMH = Stormwater Sewer Manhole
- W = Water Meter
- WV = Water Valve
- = #4 Baughman Rebar Set
- = #4 Baughman Rebar Found
- = #4 Garber Rebar Found
- = #4 Rebar Found
- (D) = Described
- (M) = Measured
- (P) = Plotted

OWNER:
Equity Ventures/Bundy Joint Venture
7201 E. Kellogg, Ste. 630
Wichita, KS 67207
Phone: 316-686-9292

BENCHMARK:
City of Wichita benchmark - SE corner of intersection of Greenwich and Kellogg, NW corner of light pole base.
48.60' NNW of center of ss manhole
48.70' S of centerline of traffic signal manhole in Kellogg median
70.50' E of back of E curb on E. side of median in Greenwich Road.
Elev. = 164.78 City Datum (1352.18 NGVD)

- DRAINAGE NOTE:**
- The Existing Soil Type per Soil Survey of Sedgwick County, Kansas is Rosehill and is a Hydrologic Group D.
 - This Parcel of Land is Not Located in A FEMA Flood Hazard Zone Area Per FIRIM Map (Community) Panel Number: 200328 0030B Effective Date: May 15, 1986.



Kellogg Avenue (US Highway 54)

NE Cor., SE 1/4,
Sec. 21, Twp. 27S, R.2E.