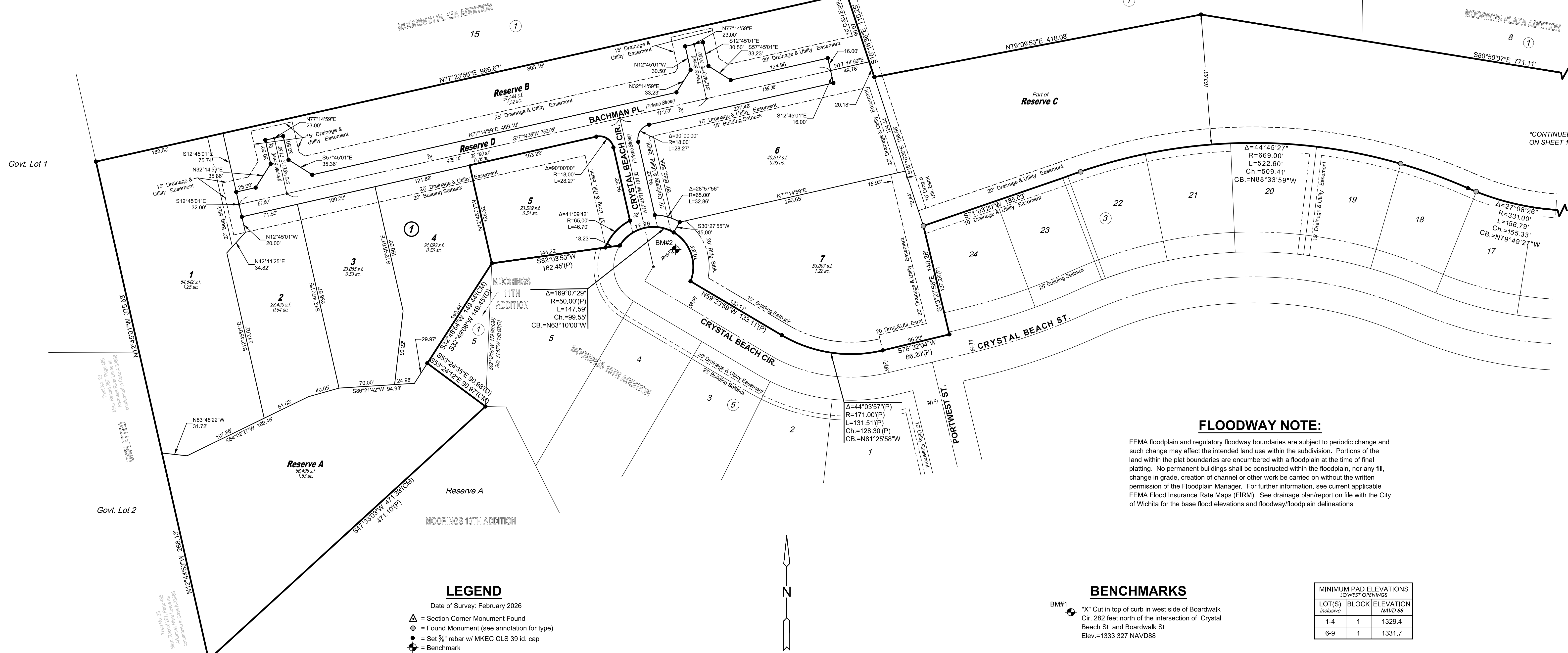
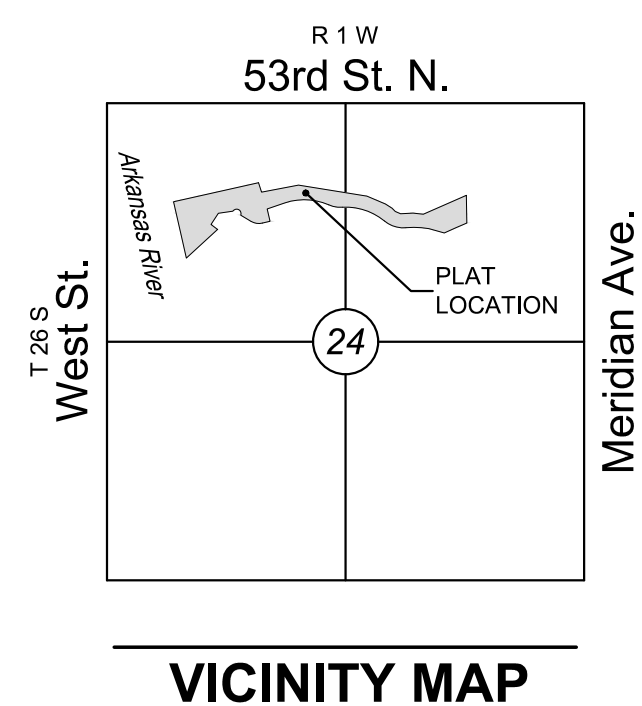


FINAL PLAT

THE MOORINGS 12TH ADDITION

AN ADDITION TO WICHITA, SEDGWICK COUNTY, KANSAS



FLOODWAY NOTE:

FEMA floodplain and regulatory floodway boundaries are subject to periodic change and such change may affect the intended land use within the subdivision. Portions of the land within the plat boundaries are encumbered with a floodplain at the time of final platting. No permanent buildings shall be constructed within the floodplain, nor any fill, change in grade, creation of channel or other work be carried on without the written permission of the Floodplain Manager. For further information, see current applicable FEMA Flood Insurance Rate Maps (FIRM). See drainage plan/report on file with the City of Wichita for the base flood elevations and floodway/floodplain delineations.

BENCHMARKS

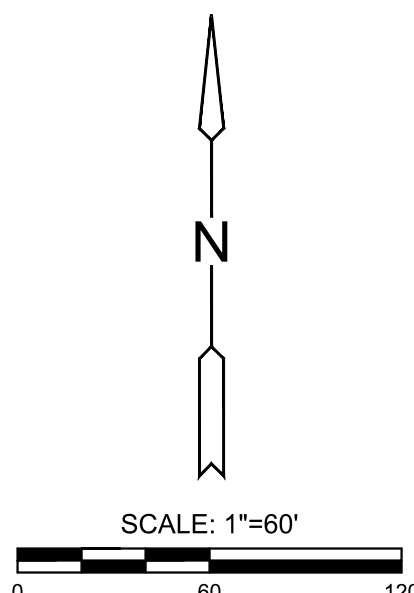
- BM#1 "X" Cut in top of curb in west side of Boardwalk Cir. 282 feet north of the intersection of Crystal Beach St. and Boardwalk St. Elev.=1333.327 NAVD88
- BM#2 "X" Cut in top of curb in northeasterly side of the cul-de-sac, being located 347 feet from the southeast corner of the intersection of Crystal Beach Circle and Portwest Street. Elev.=1336.308 NAVD88

MINIMUM PAD ELEVATIONS LOWEST DRAININGS		
LOT(S) inclusive	BLOCK	ELEVATION NAVD 88
1-4	1	1329.4
6-9	1	1331.7

LEGEND

Date of Survey: February 2026

- △ = Section Corner Monument Found
- = Found Monument (see annotation for type)
- = Set 5/8" rebar w/ MKEC CLS 39 id. cap
- ⊕ = Benchmark
- (M) = Measured
- (P) = Platted
- (CM) = Calculated from Measurement
- (CP) = Calculated from Plat
- 1 = Lot
- ① = Block



Basis of Bearings: Bearing of N89°57'40"W on the north line of the Northeast Quarter, Section 24, Township 26 South, Range 1 West of the Sixth Principal Meridian, Wichita, Sedgwick County, Kansas.
This plat is surveyed and platted on the Horizontal Datum based on the Kansas Coordinate System of 1983, NAD83(2011), EPOCH: 2010.0000, South Zone and based on the "US Survey foot" definition. Coordinates shown have been modified to the ground using a combined adjustment factor of 1.0001200144. State Plane coordinates can be calculated by multiplying the shown values by 0.9998800000.