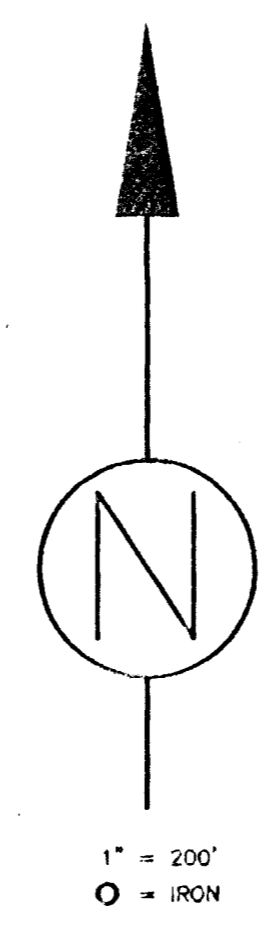
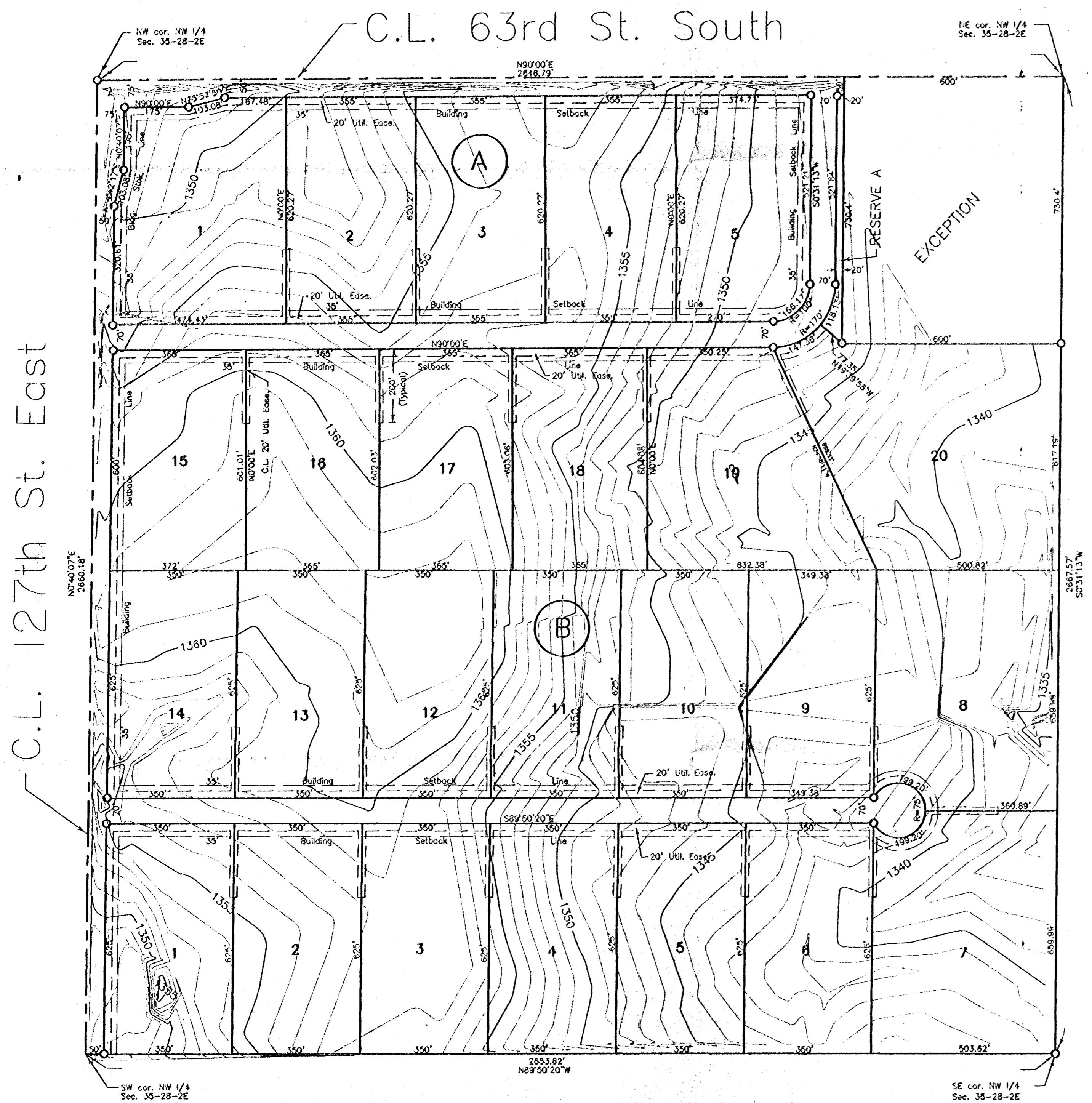
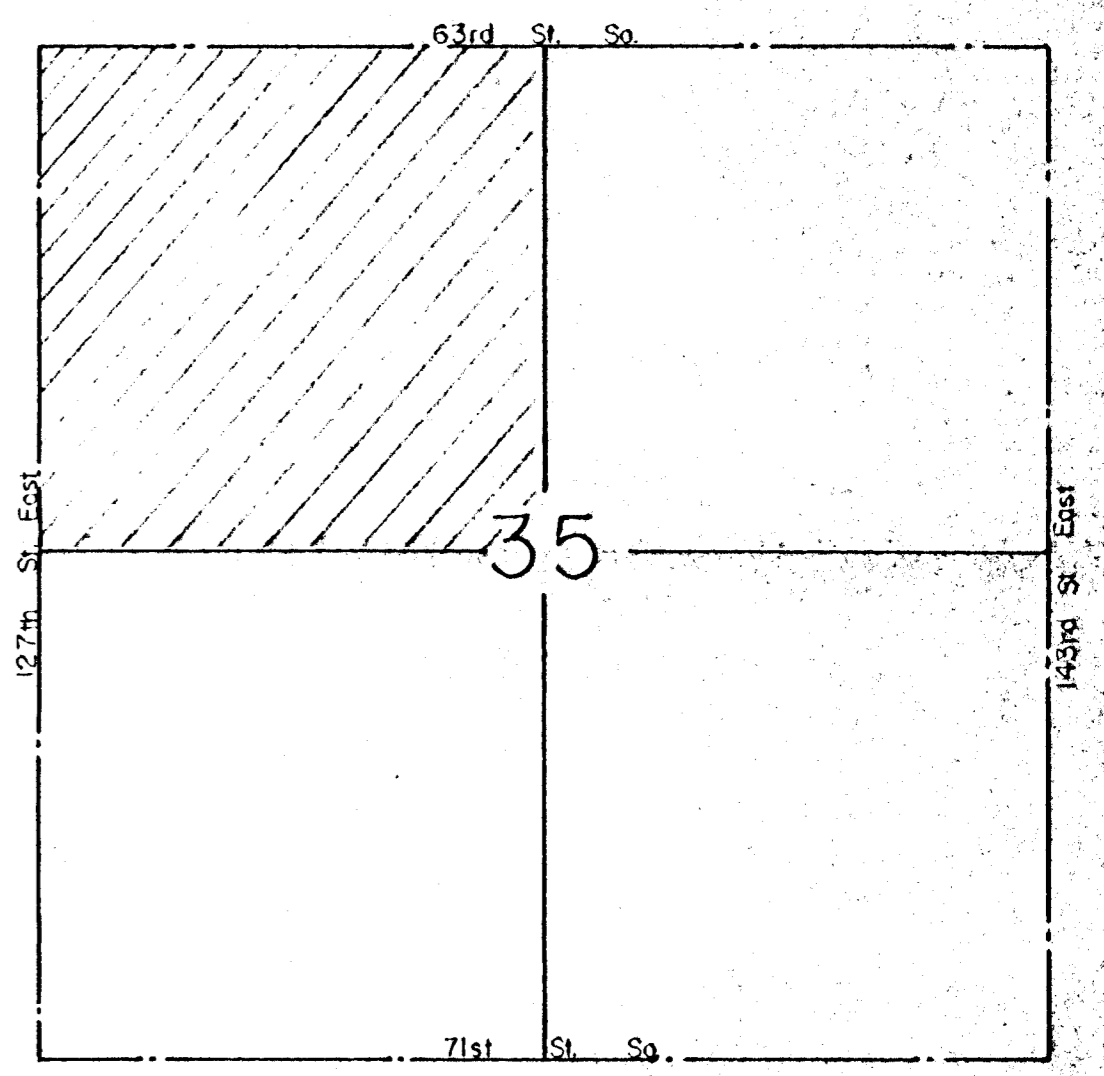


PRELIMINARY PLAT
 PRAIRIE RIDGE ADDITION
 SEDGWICK COUNTY, KANSAS



B.M. = ELEV. 1345.03 - "X" on E. H.W. of cross-road culvert, 30' SE of NW cor. NW 1/4 Sec. 35-28-2E

TOPO MADE APRIL, 1998



VICINITY MAP

OWNERS: Cheryl Troyer, Larry Bannon,
 Greg and Judith Farber
 7001 S. 99th St. East
 Derby, KS 67037

SANDALWOOD SURVEYING INC.
 PO BOX 75053
 WICHITA, KS 67275-0553