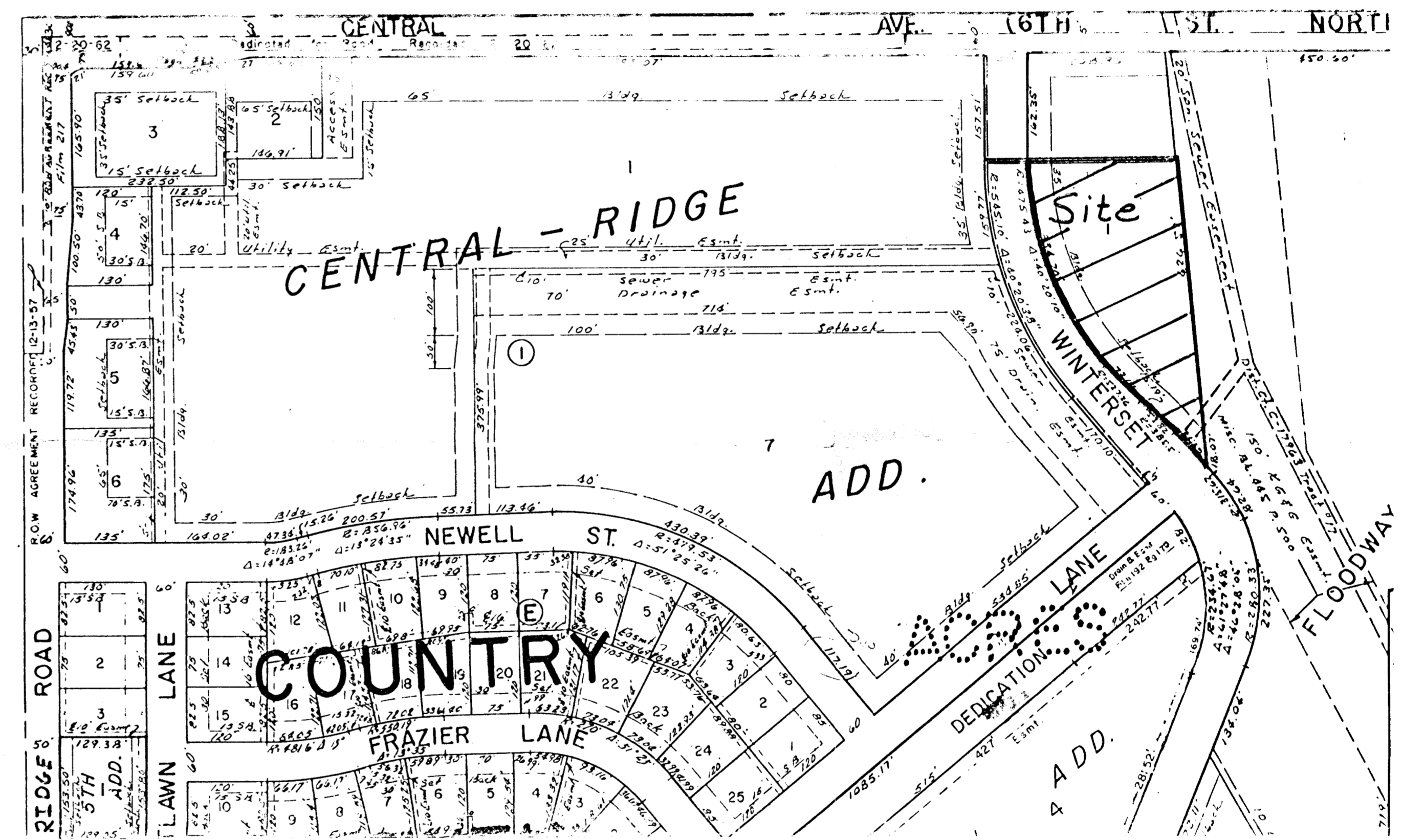
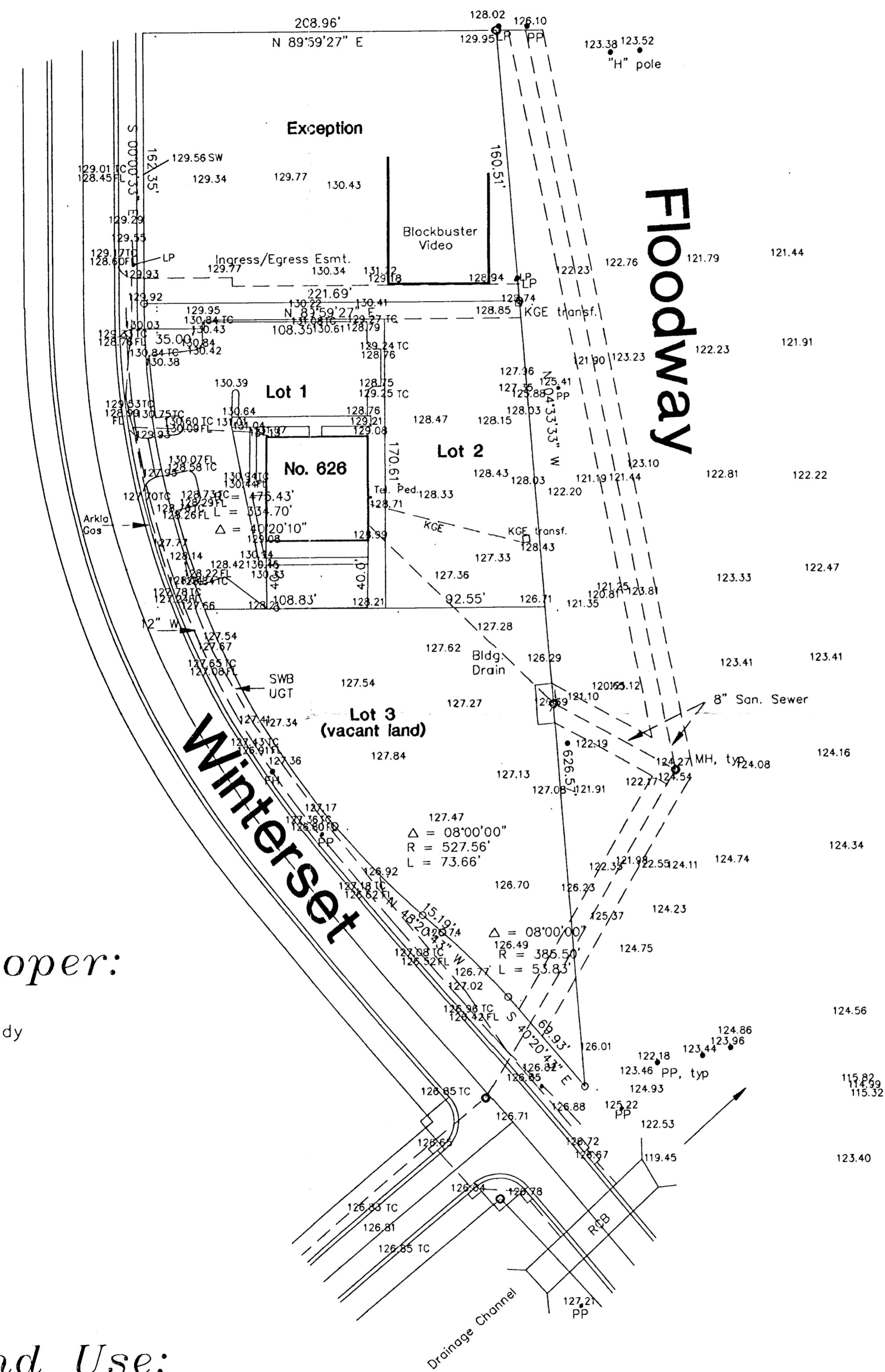


J-225  
N-10  
L-245

# Central Ave.

# Preliminary Plat of Winterset Plaza

an addition to  
Wichita, Sedgwick County, Kansas  
January, 1994



Vicinity Map  
1" = 200' +/-

## Owner/Developer:

Robert G. Bundy & Phillip A. Bundy  
c/o Bundy and Associates  
6235 West Kellogg  
Wichita, Kansas 67209  
  
Suburban West State Bank  
PO Box 318  
Goddard, Kansas 67052

## Zoning:

Commercial

## Existing Land Use:

Commercial

## Proposed Land Use:

Commercial

S. E. Anderson PE/LS  
Consulting Engineer  
Whitewater, Kansas  
March, 1994