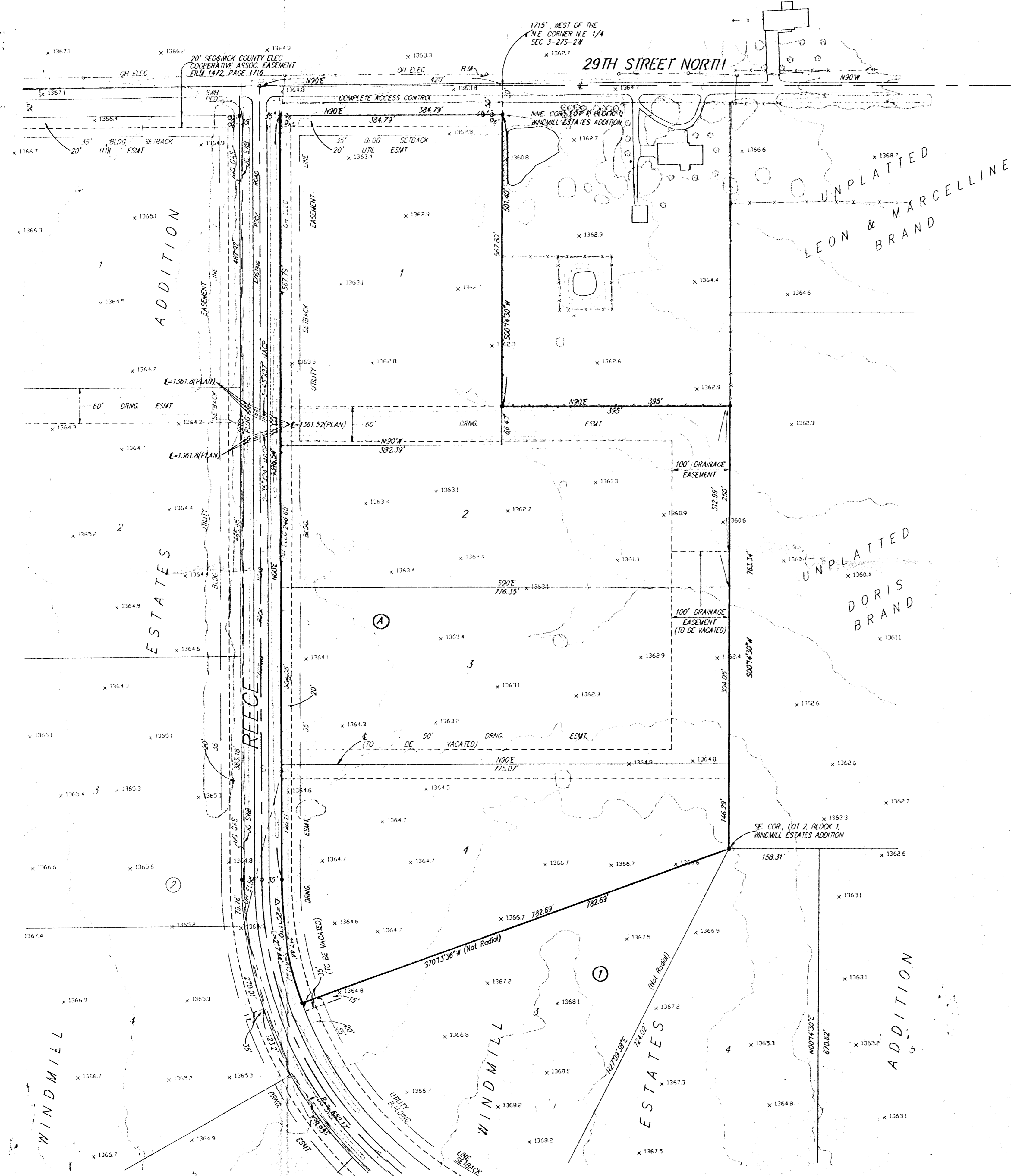
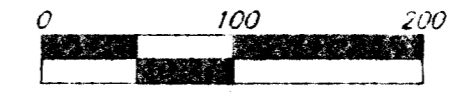


SKETCH PLAT
WINDMILL ESTATES 2ND ADDITION
SEDGWICK COUNTY, KANSAS



SCALE: 1" = 100'



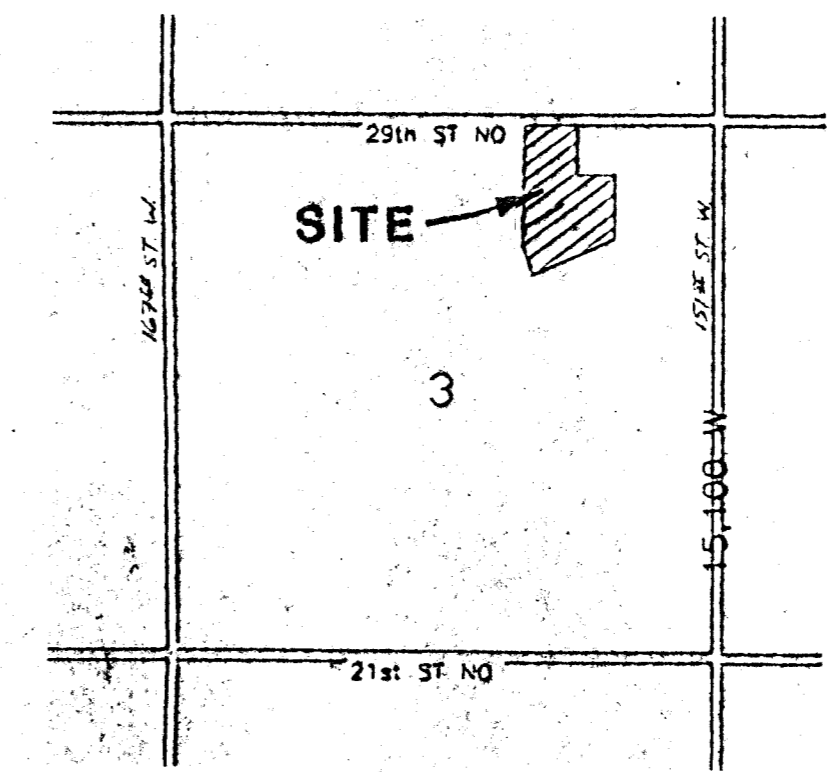
2' CONTOUR INTERVAL

- = 1/2" "BAUGHMAN" REBAR (FOUND)
- ⊠ = 1/2" IRON OVER STONE (FOUND)

LEGAL DESCRIPTION:
 A replat of Lots 1 and 2, Block 1, Windmill Estates Addition, Sedgwick County, Kansas.

OWNER:
 High Plains Investment
 Diane MacNair, President
 9103 W. 18th Street
 Wichita, Kansas 67212
 (316) 722-6652

BENCH MARK:
 R.R. Spike in the South side of Power Pole, located on the North side of 29th Street N., approx. 25' W. of the NNE. Cor., Lot 1, Blk. 1, Windmill Estates Addition, Sedgwick County, Kansas.
 Elev. = 1364.61 M.S.L.



VICINITY MAP