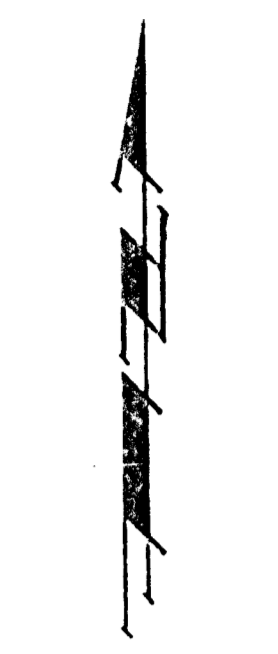
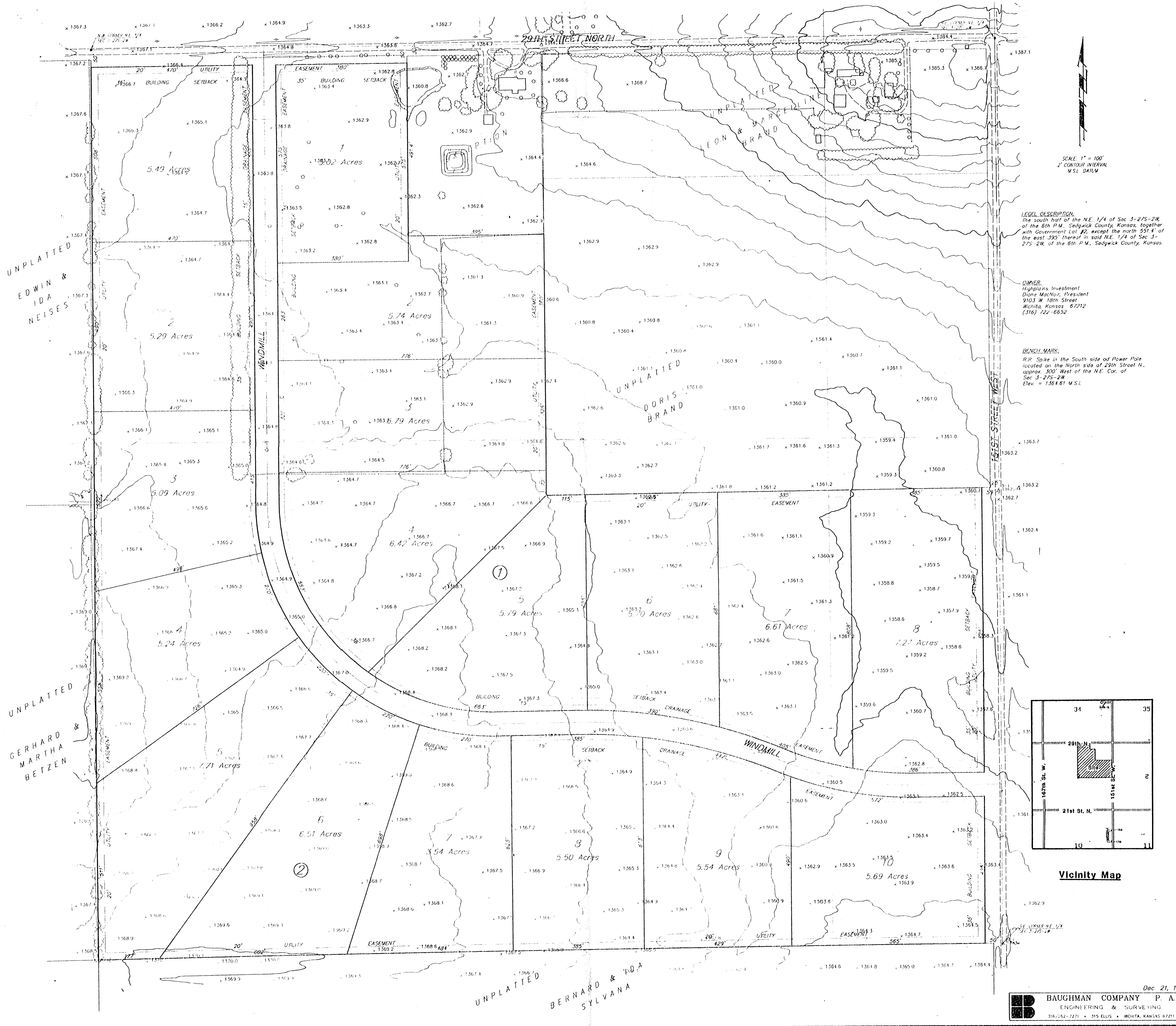


# PRELIMINARY PLAT WINDMILL ESTATES ADDITION SEDGWICK COUNTY, KANSAS

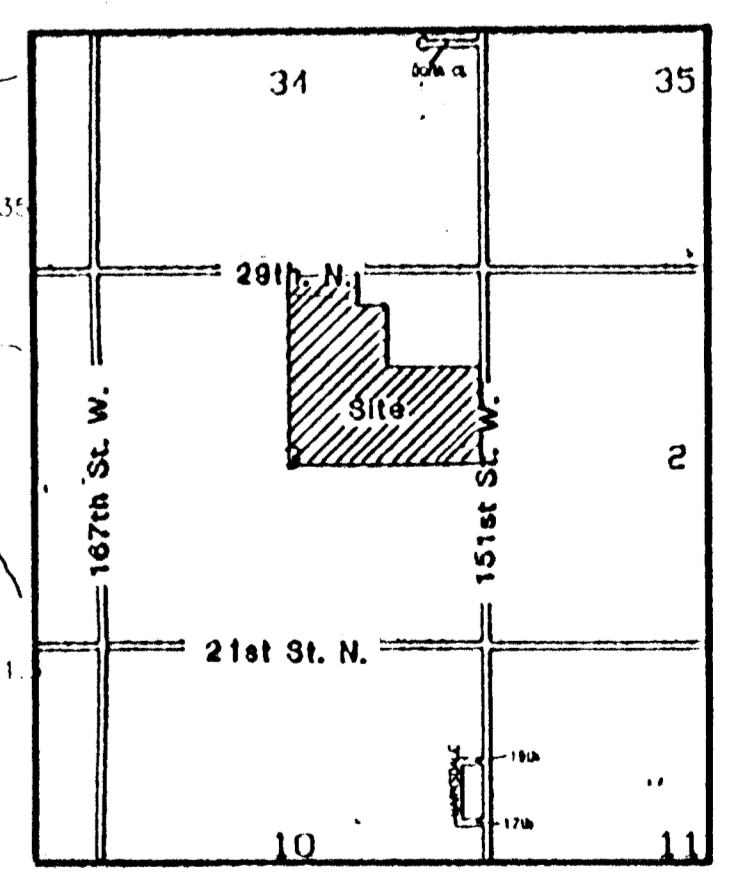


SCALE: 1" = 100'  
2" CONTOUR INTERVAL  
U.S.L. DATUM

**LEGAL DESCRIPTION:**  
The south half of the NE 1/4 of Sec 3-275-2W, of the 6th P.M., Sedgwick County, Kansas, together with Government Lot #2, except the north 551' 4" of the east 395' thereof in said NE 1/4 of Sec 3-275-2W, of the 6th P.M., Sedgwick County, Kansas.

**OWNER:**  
Hyphlions Investment  
Doris Mackay, President  
9103 W 18th Street  
Wichita, Kansas 67212  
(316) 722-6652

**BENCH MARK:**  
R.R. Spike in the South side of Power Pole located on the North side of 29th Street N., approx. 300' West of the NE Cor. of Sec 3-275-2W.  
Elev. = 1364.61 M.S.L.



**Vicinity Map**