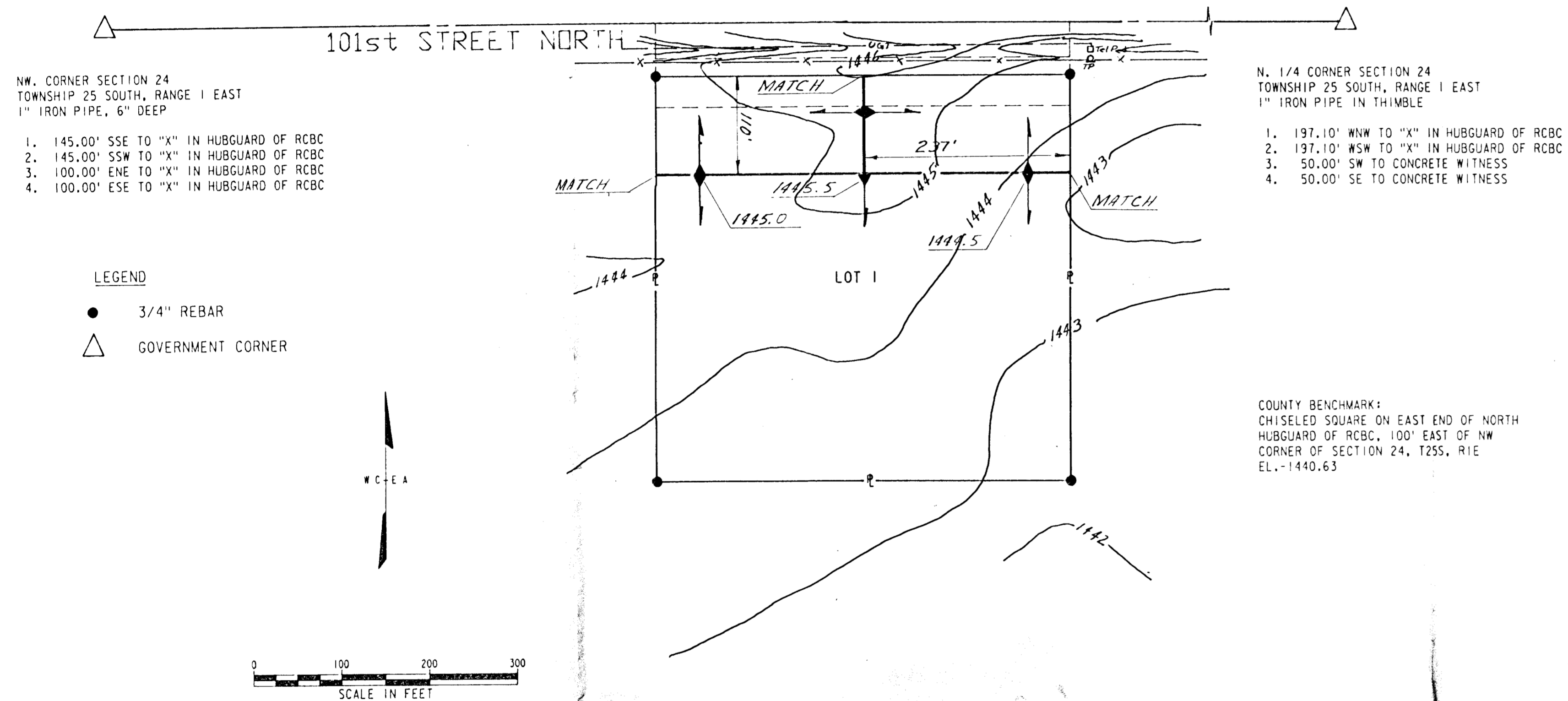


WilTel's Addition to Sedgwick County, Kansas



WILTEL'S ADDITION DRAINAGE PLAN
WILLIAMS TELECOMMUNICATIONS CO.
KUSKE REPEATER STATION
SEDGWICK COUNTY, KANSAS

REVISION	DATE	BY

DESIGN	DRAWN	DATE
TLM	BLM/MEK	MARCH 13, 1987
		FILE NO. 87-31
		SHEET NO. 1
		OF 1