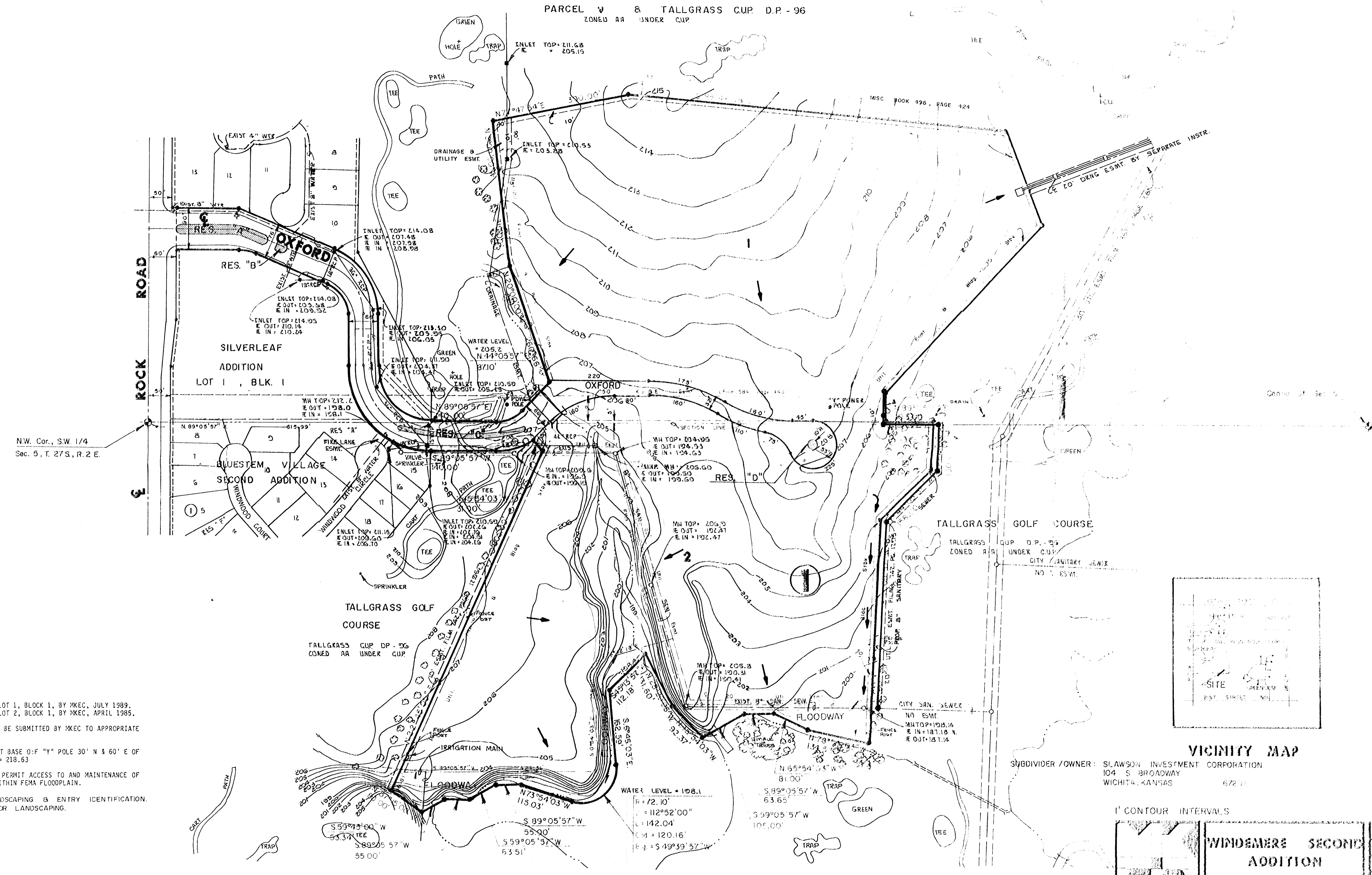
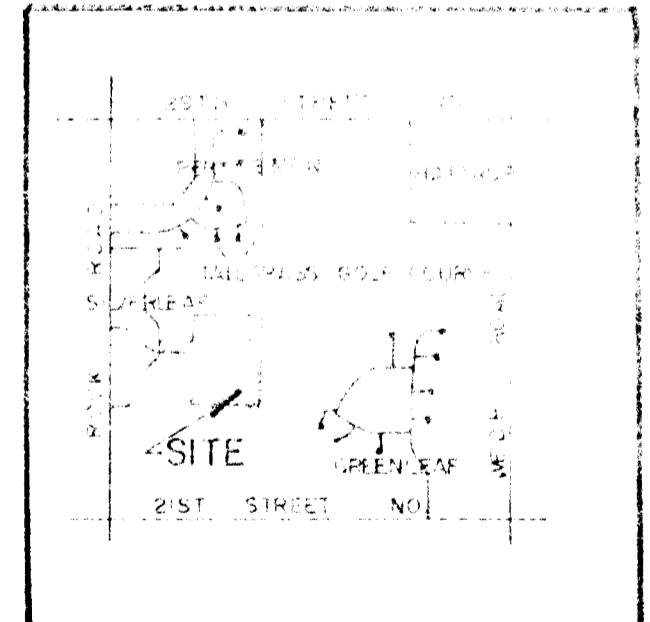


PARCEL V & TALLGRASS CUP D.P. - 96
ZONED RR UNDER CUP



N.W. Cor., S.W. 1/4
Sec. 5, T. 27 S., R. 2 E.

NOTES
 TOPOGRAPHY PREPARED FOR LOT 1, BLOCK 1, BY MKEC, JULY 1989.
 TOPOGRAPHY PREPARED FOR LOT 2, BLOCK 1, BY MKEC, APRIL 1985.
 DRAINAGE CONCEPT PLAN TO BE SUBMITTED BY MKEC TO APPROPRIATE CITY ENGINEER.
 BENCH MARK: SCORE MARK AT BASE OF "Y" POLE 30' N & 60' E OF 1/4 SEC. CORNER - ELEV. = 218.63
 AREA WITHIN FLOODWAY TO PERMIT ACCESS TO AND MAINTENANCE OF SHORE LINE OF LAKE/NOT WITHIN FEMA FLOODPLAIN.
 RESERVE "A" FOR LANDSCAPING & ENTRY IDENTIFICATION.
 RESERVE "B", "C", & "D" FOR LANDSCAPING.



VICINITY MAP
 SUBDIVIDER / OWNER: SLAWSON INVESTMENT CORPORATION
 104 S BROADWAY
 WICHITA, KANSAS 67202

1' CONTOUR INTERVALS

**WIDEMERE SECOND ADDITION
 DRAINAGE & UTILITY CONCEPT**

ADD. KANSAS ENGINEER CONSULTANTS PA
 1001 N. 10th St., Suite 200
 Wichita, Kansas 67202
 636-5566