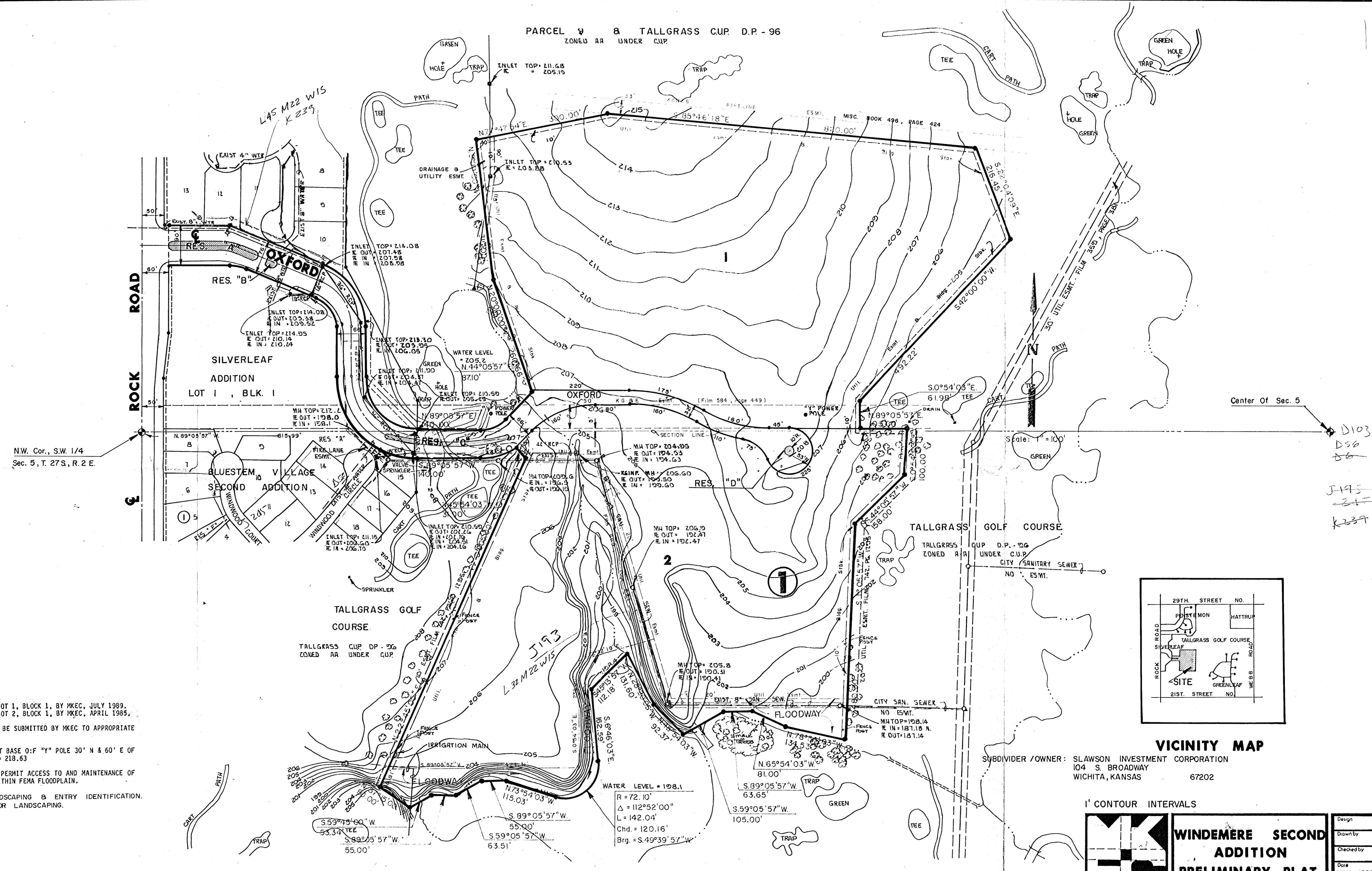


PARCEL 2 & TALLGRASS CUP D.P. - 96
ZONED AR UNDER CUP



N.W. Cor., S.W. 1/4
Sec. 5, T. 27S., R. 2 E.

Center Of Sec. 5

D103
D56
J195
K237

NOTES

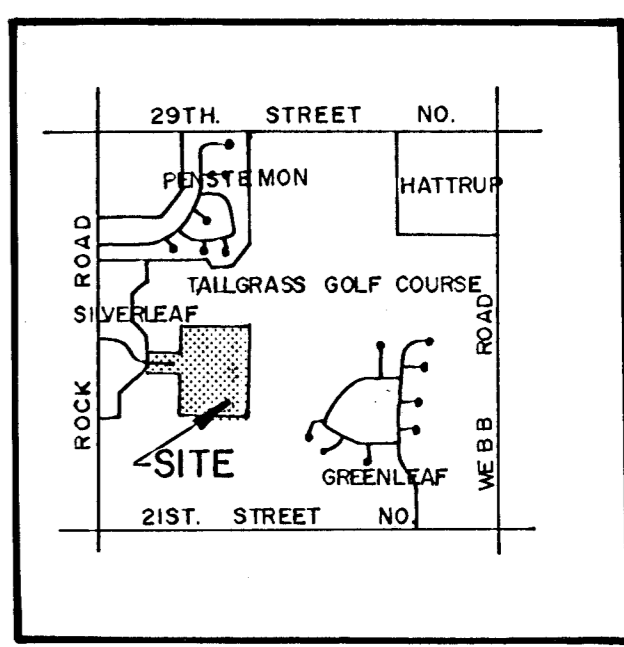
TOPOGRAPHY PREPARED FOR LOT 1, BLOCK 1, BY MKEC, JULY 1989.
TOPOGRAPHY PREPARED FOR LOT 2, BLOCK 1, BY MKEC, APRIL 1985.

DRAINAGE CONCEPT PLAN TO BE SUBMITTED BY MKEC TO APPROPRIATE CITY ENGINEER.

BENCH MARK: SCORE MARK AT BASE O.F. "Y" POLE 30' N & 60' E OF 1/4 SEC. CORNER - ELEV. = 218.63

AREA WITHIN FLOODWAY TO PERMIT ACCESS TO AND MAINTENANCE OF SHORE LINE OF LAKE/NOT WITHIN FEMA FLOODPLAIN.

RESERVE "A" FOR LANDSCAPING & ENTRY IDENTIFICATION.
RESERVE "B", "C", & "D" FOR LANDSCAPING.



VICINITY MAP

SUBDIVIDER / OWNER: SLAWSON INVESTMENT CORPORATION
104 S. BROADWAY
WICHITA, KANSAS 67202

1' CONTOUR INTERVALS

	WINDEMERE SECOND ADDITION PRELIMINARY PLAT	Design
		Drawn by
		Checked by
		Date JULY, 1989 Job no.

MID-KANSAS ENGINEERING CONSULTANTS PA
3500 NORTH ROCK ROAD
BUILDING #800
WICHITA, KANSAS 67226

Sheet 1
of 1

636-5566

WATER LEVEL = 198.1
R = 72.10'
Δ = 112°52'00"
L = 142.04'
Chd. = 120.16'
Brg. = S.49°39'57"W