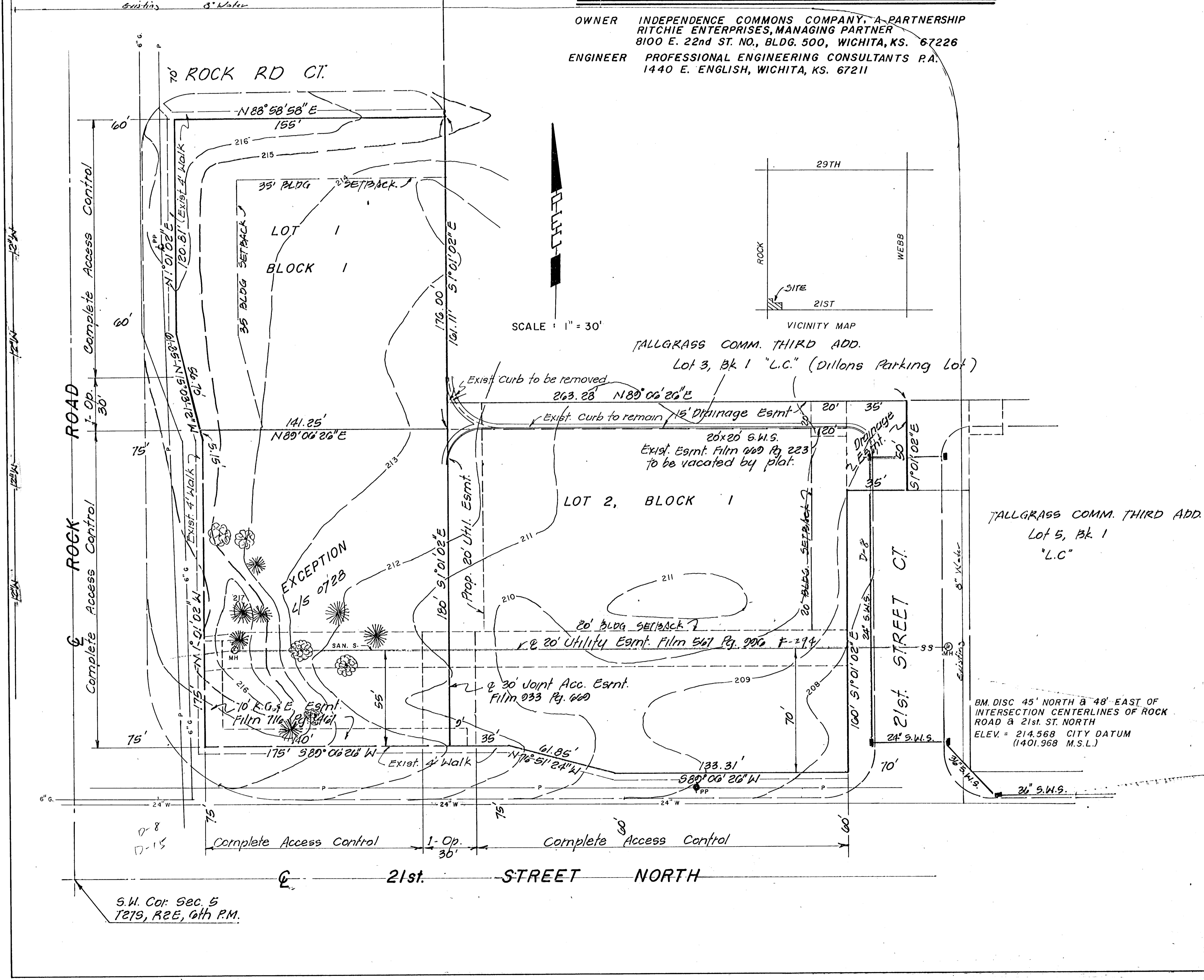


81521 22-615

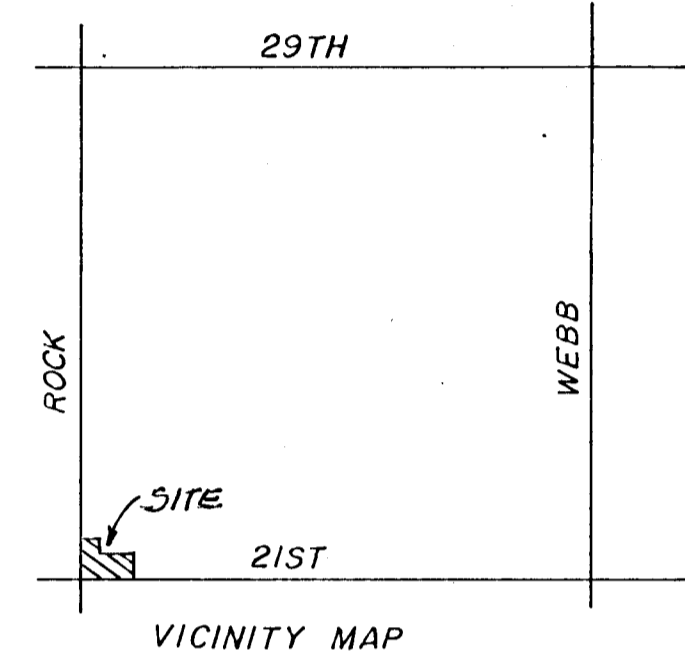
TALLGRASS COMM. THIRD ADD.
Lot 1, Bk 1.
"L.C."

SKETCH PLAT TALLGRASS COMMERCIAL 4th ADDITION

OWNER INDEPENDENCE COMMONS COMPANY, A PARTNERSHIP
RITCHIE ENTERPRISES, MANAGING PARTNER
8100 E. 22nd ST. NO., BLDG. 500, WICHITA, KS. 67226
ENGINEER PROFESSIONAL ENGINEERING CONSULTANTS P.A.
1440 E. ENGLISH, WICHITA, KS. 67211



SCALE: 1" = 30'



TALLGRASS COMM. THIRD ADD.
Lot 3, Bk 1 "L.C." (Dillons Parking Lot)

TALLGRASS COMM. THIRD ADD.
Lot 5, Bk 1
"L.C."

BM. DISC 45° NORTH & 48° EAST OF
INTERSECTION CENTERLINES OF ROCK
ROAD & 21st. ST. NORTH
ELEV. = 214.568 CITY DATUM
(1401.968 M.S.L.)

S.W. Cor. Sec. 5
T21S, R2E, 6th P.M.