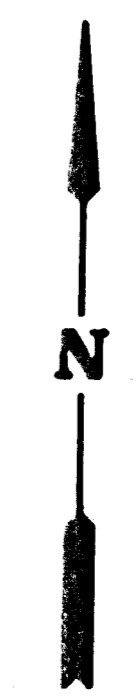
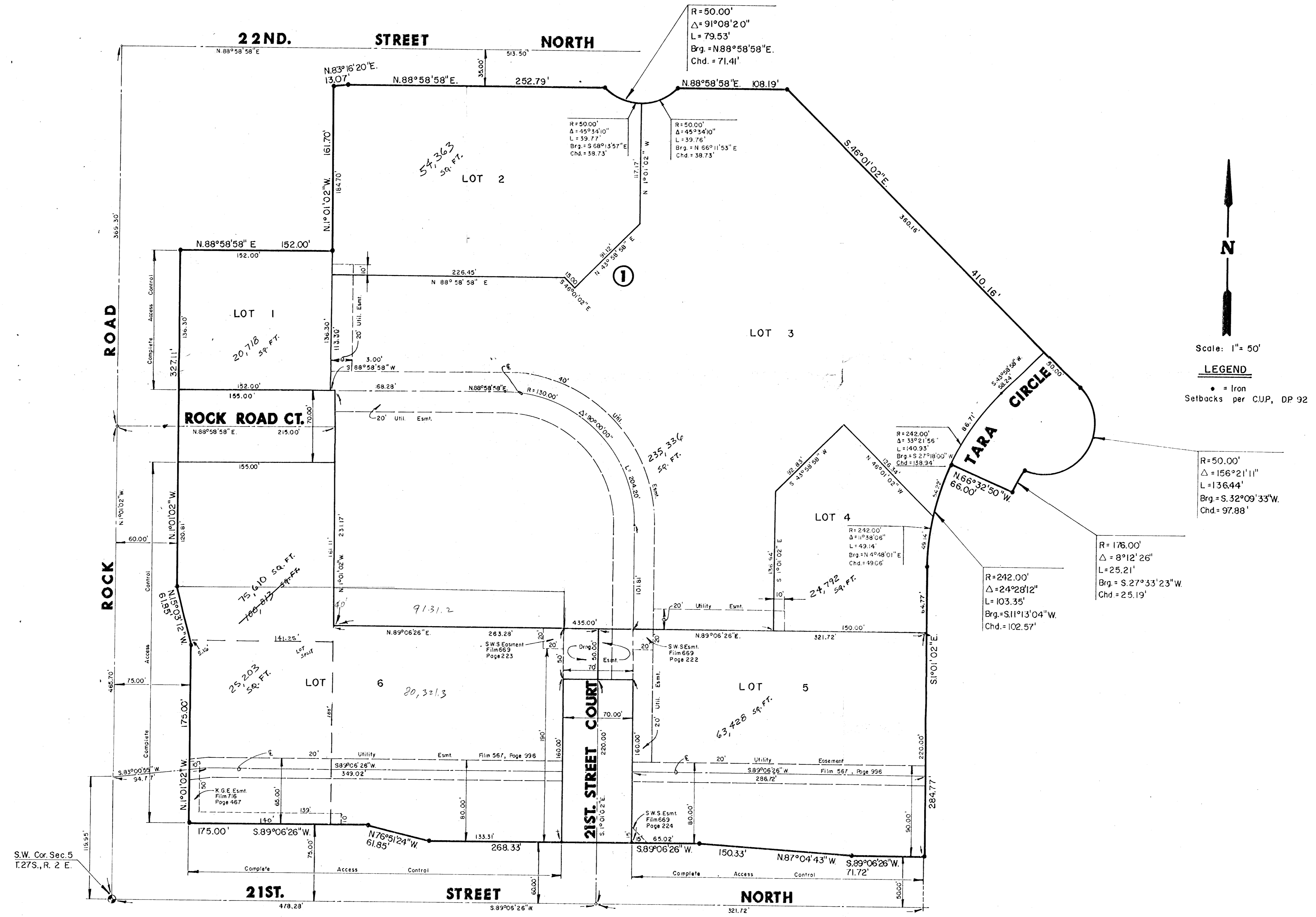


FINAL PLAT OF TALLGRASS COMMERCIAL THIRD ADDITION

AN ADDITION TO WICHITA, SEDGWICK COUNTY, KANSAS



Scale: 1" = 50'

LEGEND

• = Iron
Setbacks per CUP, DP 92

S.W. Cor. Sec. 5
T.27S., R. 2 E.