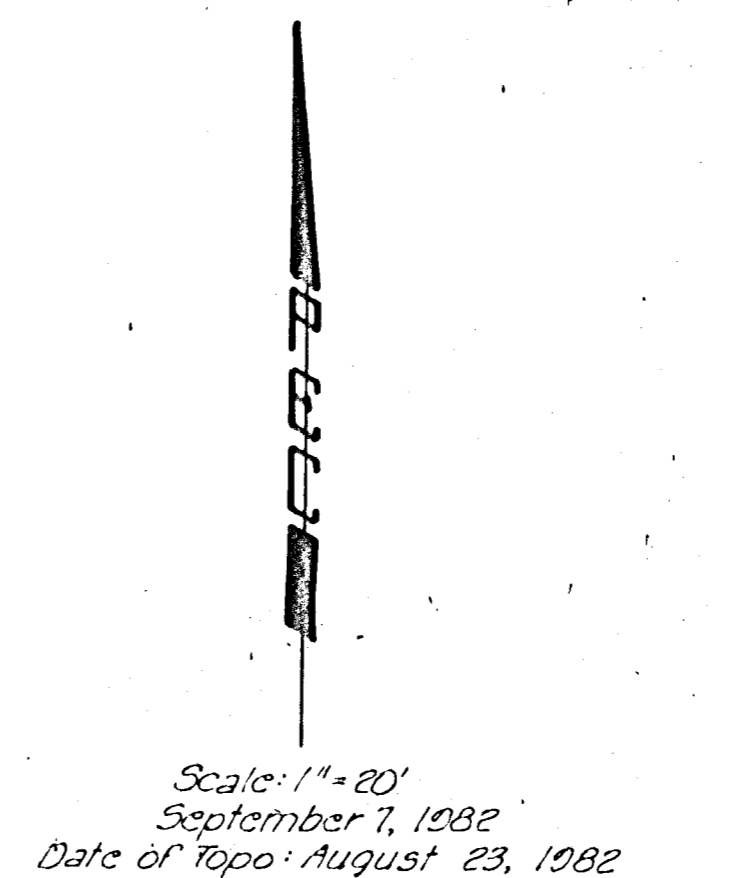
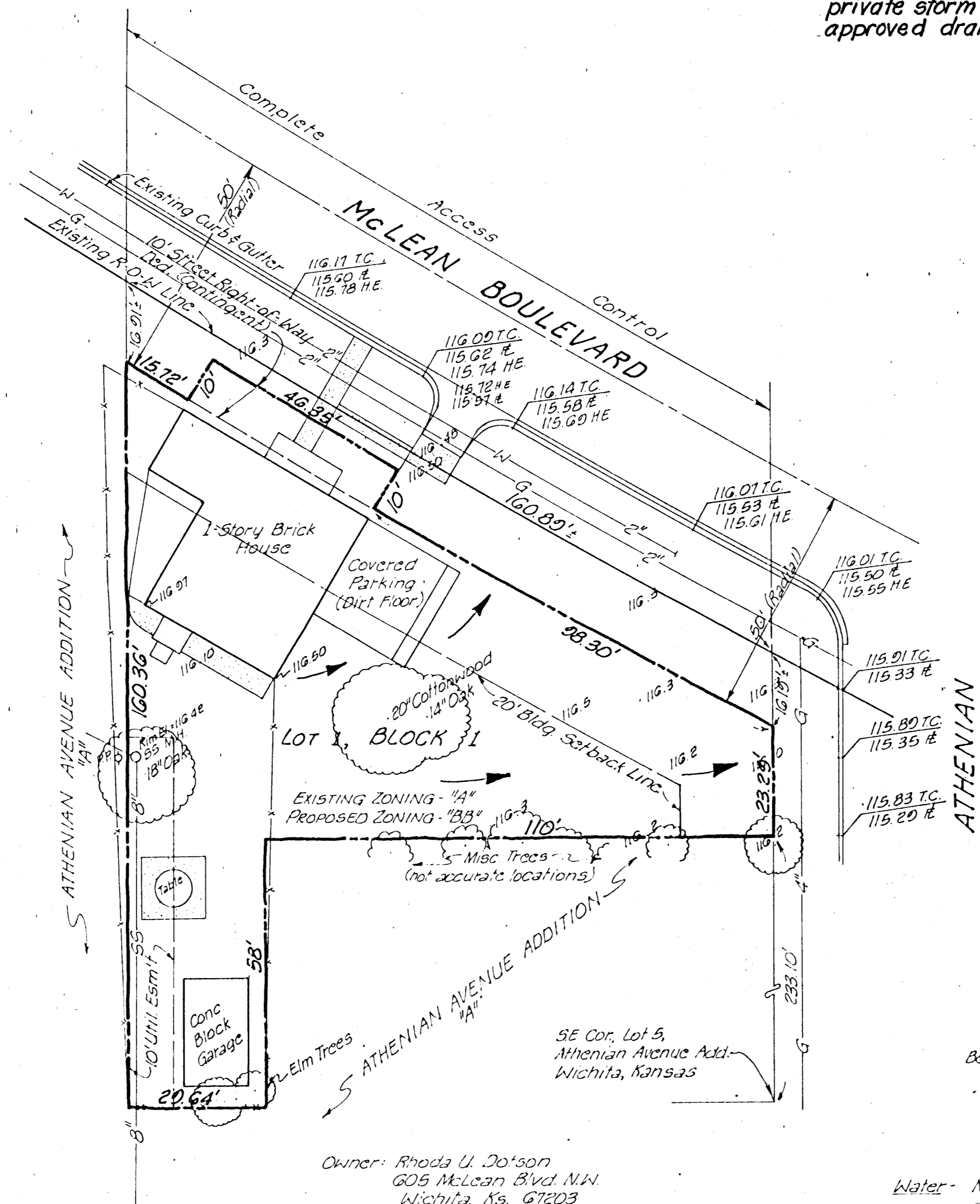


DRAINAGE CONCEPT/PLAN
SEPTEMBER 16, 1982
T.N.T. ADDITION

NOTE: The lot shall be graded to drain to existing streets, gutters, or storm sewers via drives, flumes, private storm sewers and/or other approved drainage facilities.



Bench Mark - "0" in "JONES," center of sidewalk south, S.W. Corner of Athenian & St. Louis.
 El: 115.83 City Datum

Owner: Rhoda U. Do'son
 605 McLean Blvd. N.W.
 Wichita, Ks. 67203
 Contract Purchaser: Dr. Timothy N. Turner
 2740 W. 13th St. #203
 Wichita, Ks. 67203
 Engineer: Professional Engineering Consultants, P.A.
 Land Development Division
 1440 E. English
 Wichita, Ks. 67211

- UTILITIES**
- Water** - McLean Blvd; 48" line, 1' north of north curb line; 2" line, 6' south of south curb line, ends 40' west of west curb line of Athenian (as shown).
 - Gas** - Athenian; 4" steel G' east of west (as shown). McLean; 2" steel G' north of south (" ")
 - Telephone** - Aerial line running in easement between St. Clair and Athenian, stops south of McLean Blvd.
 - Electric** - Beginning 20' south of McLean, running on east side of Athenian, 12 kv 3Ø, 4 wire, 60 cycles. Street Light circuits along McLean.
 - Sanitary Sewer** - Existing san. sewer (8") as shown, services exist structure.