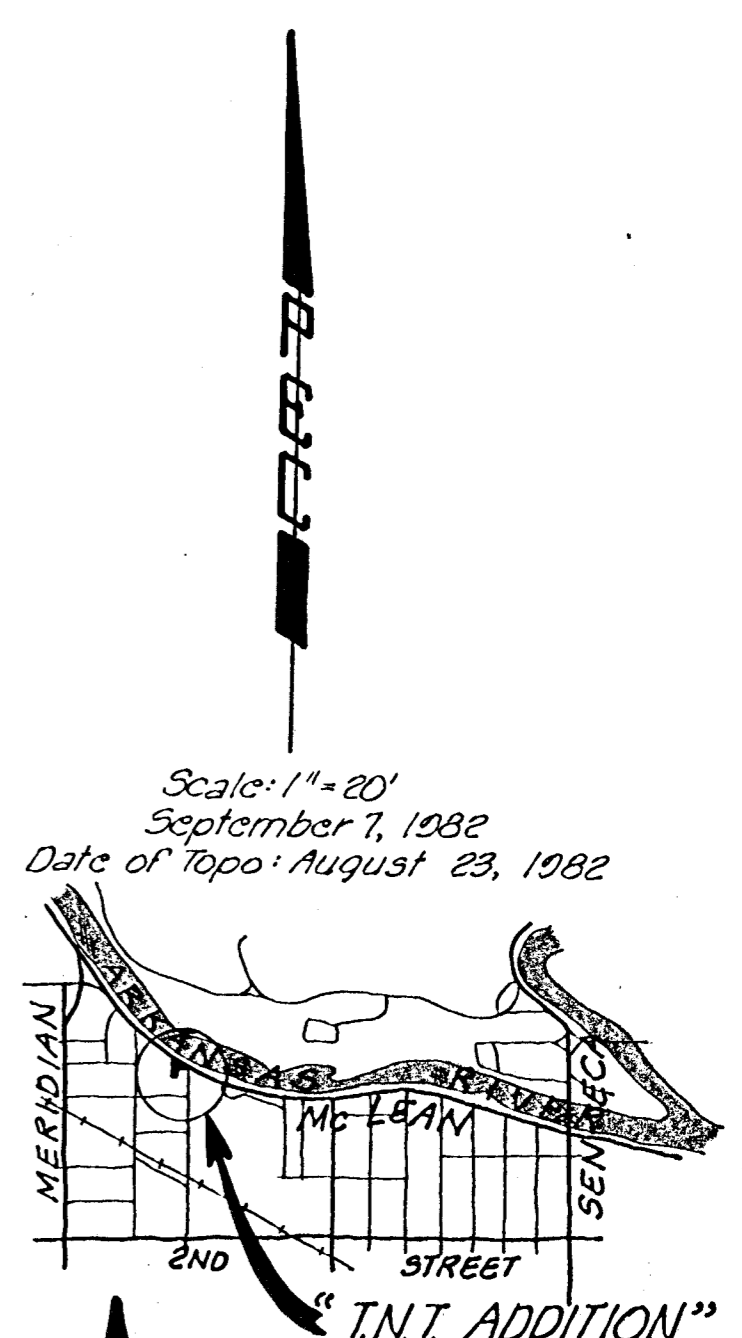
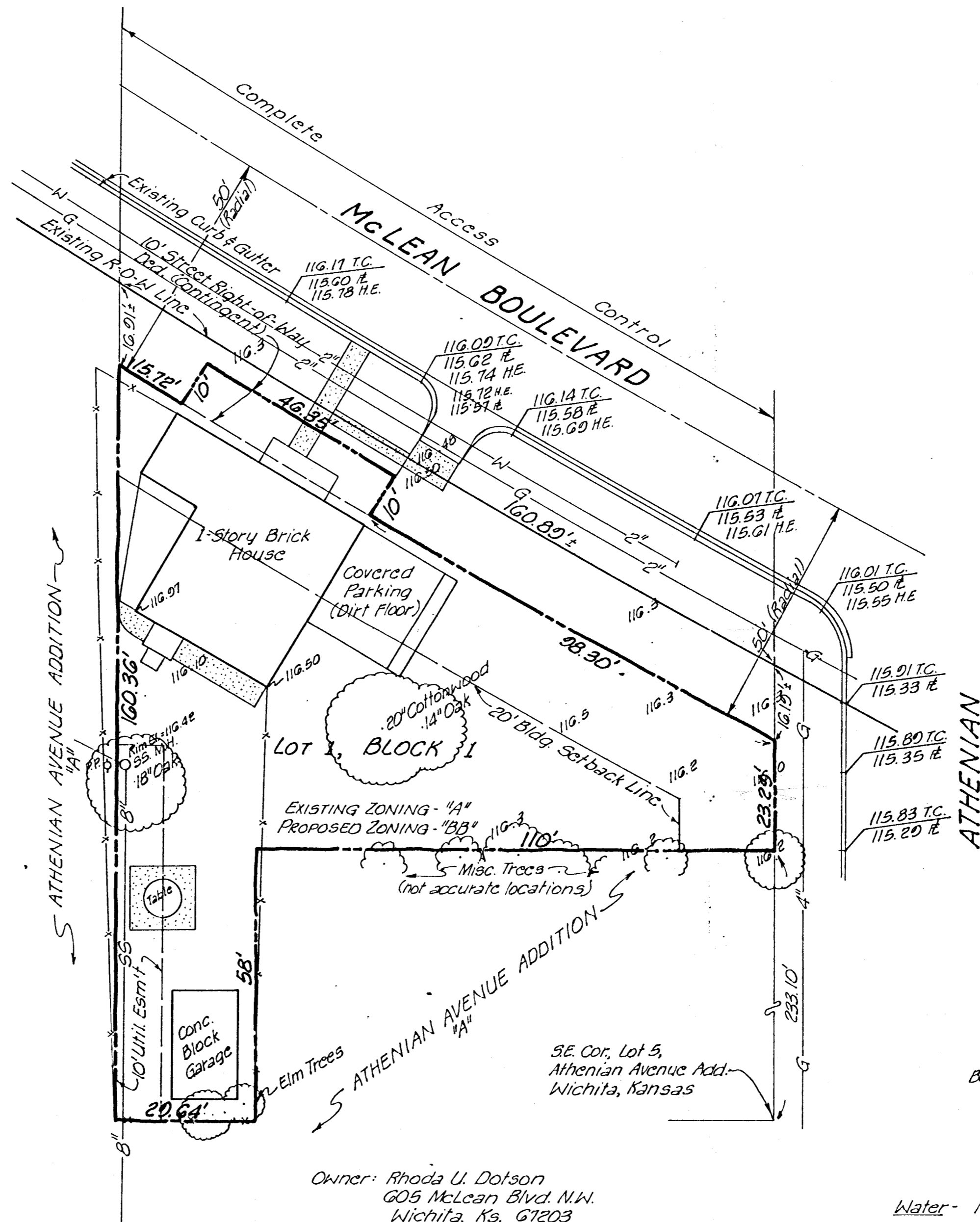


SKETCH PLAT
- PRELIMINARY PLAT -
T.N.T. ADDITION



Scale: 1" = 20'
 September 7, 1982
 Date of Topo: August 23, 1982

LOCATION MAP
 1" = 2000'

Bench Mark - "O" in "JONES" center of sidewalk south, S.W. Corner of Athenian & St. Louis.
 El. 115.83 City Datum

Owner: Rhoda U. Dotson
 605 McLean Blvd. N.W.
 Wichita, Ks. 67203
 Contract Purchaser: Dr. Timothy N. Turner
 2740 W. 13th St. #203
 Wichita, Ks. 67203
 Engineer: Professional Engineering Consultants, P.A.
 Land Development Division
 1440 E. English
 Wichita, Ks. 67211

UTILITIES

- Water** - McLean Blvd; 48" line, 1' north of north curb line; 2" line, 6' south of south curb line, ends 40' west of west curb line of Athenian (as shown).
- Gas** - Athenian; 4" steel 6' cast of west ft (as shown). Mc Lean; 2" steel 6' north of south ft.
- Telephone** - Aerial line running in easement between St. Clair and Athenian, stops south of McLean Blvd.
- Electric** - Beginning 20' south of McLean, running on east side of Athenian, 12 kv 3φ, 4 wire, 60 cycles. Street Light circuits along McLean.
- Sanitary Sewer** - Existing san. sewer (8") as shown, services exist. structure.