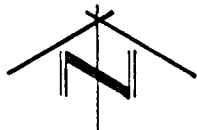
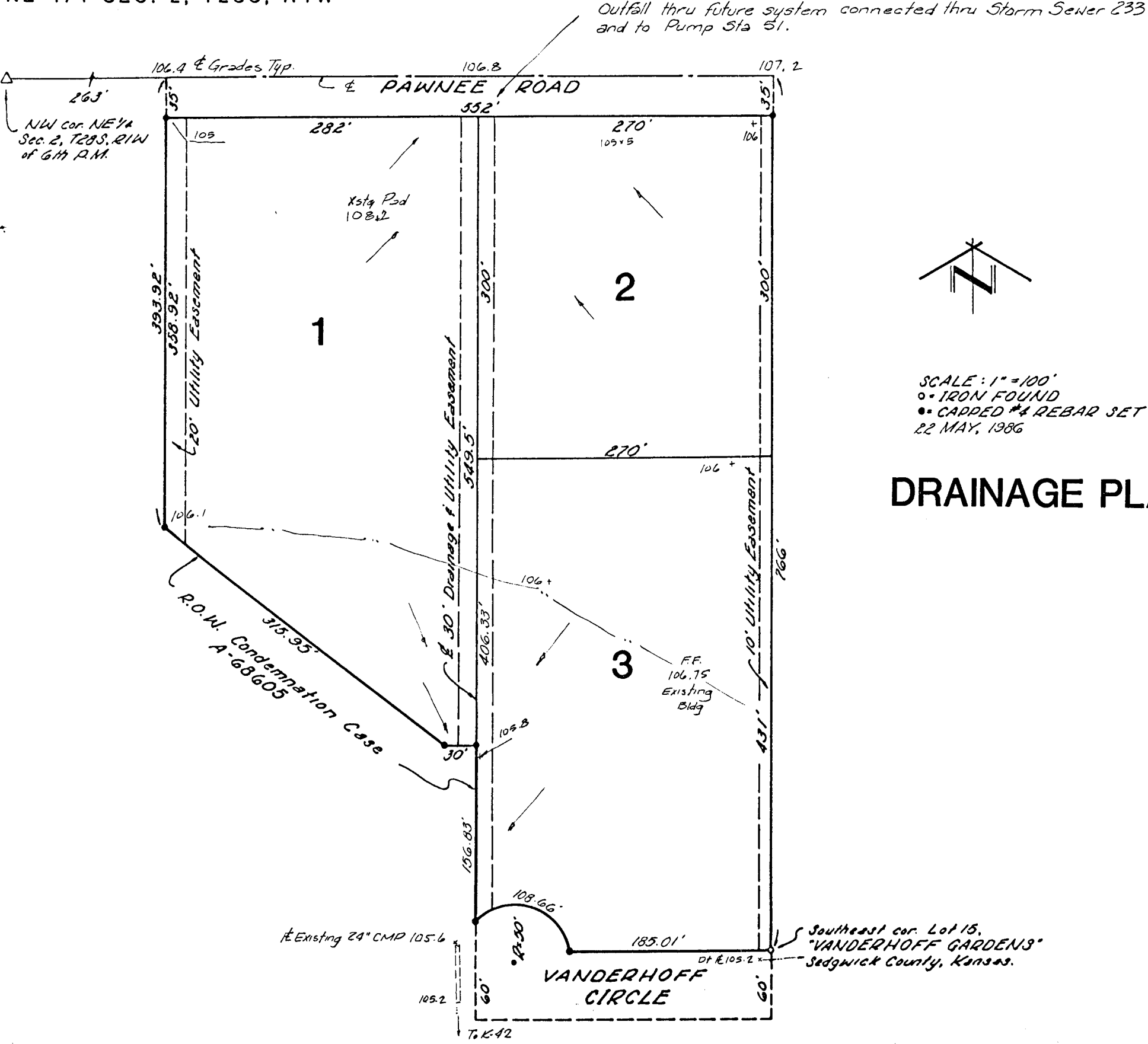


VANDERHOFF GARDENS SECOND ADDITION WICHITA, SEDGWICK COUNTY, KANSAS

NE 1/4 SEC. 2, T28S, R1W



SCALE: 1" = 100'
 ○ IRON FOUND
 ● CAPPED #4 REBAR SET
 22 MAY, 1986

DRAINAGE PLAN