

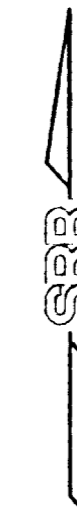
SKETCH PLAT VENTURE THREE ADDITION

WICHITA, SEDGWICK COUNTY, KANSAS

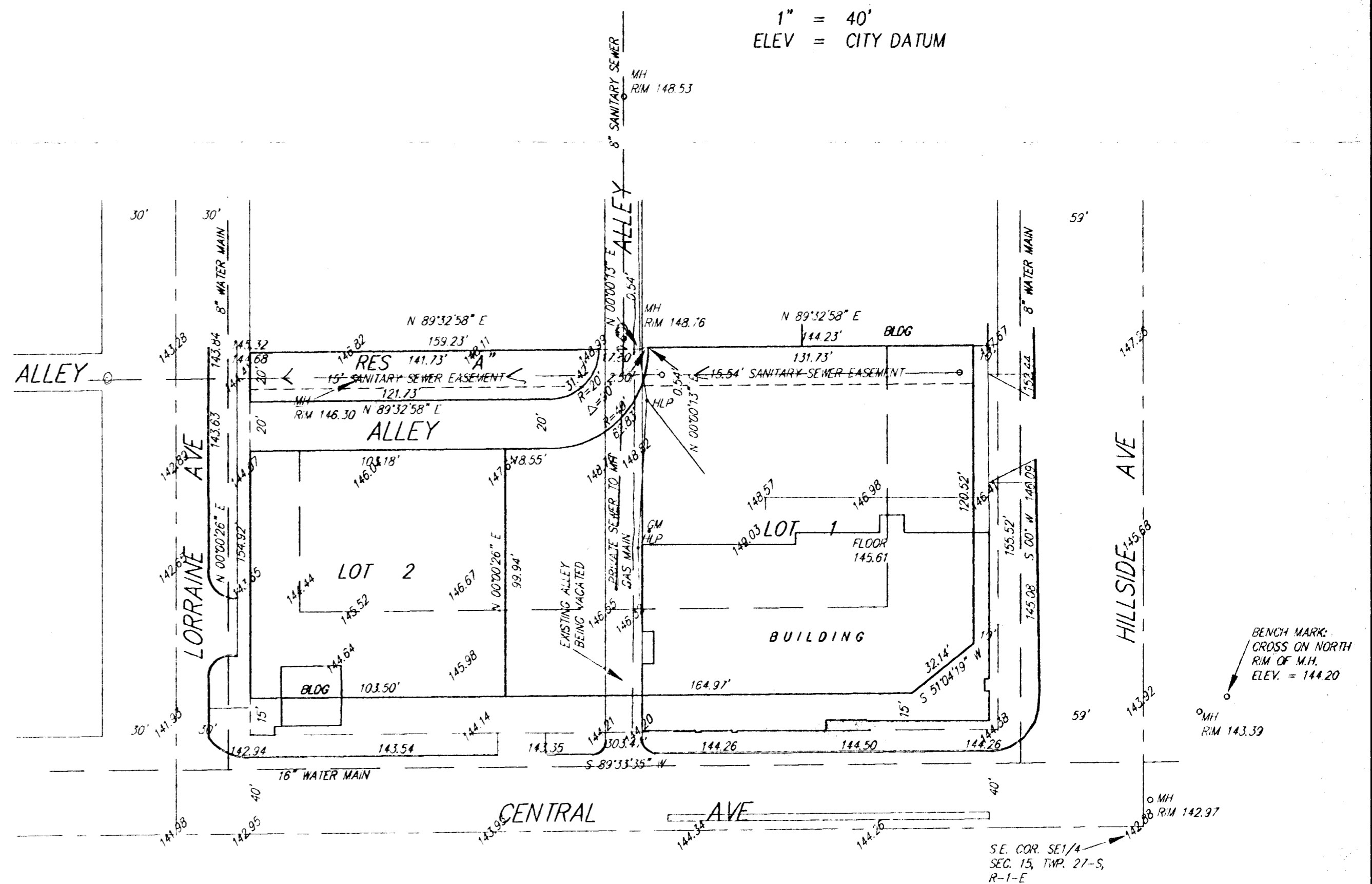
LOTS 1, 2, 3, 4, 5, AND 6, HODSON'S SECOND ADDITION TO WICHITA, SEDGWICK COUNTY, KANSAS, TOGETHER WITH ALL OF THE 15 FOOT ALLEY ADJACENT TO SAID LOTS, AND THE SOUTH 0.54 FEET OF LOT 10 ON HILLSIDE AVENUE, SCHUCKMAN'S ADDITION TO WICHITA, SEDGWICK COUNTY, KANSAS.

VENTURE THREE, L.P.
% DAVID BURK
835 E. 1ST ST
WICHITA, KS 67202

PH 267-0505



1" = 40'
ELEV = CITY DATUM



Dist. D. 5512



841 SOUTH HILLSIDE
WICHITA, KANSAS 67211
316-652-7754
FAX 652-7932

SAVOY, RUGGLES & BOHM, P. A.
ENGINEERING & SURVEYING

27 AUG 93