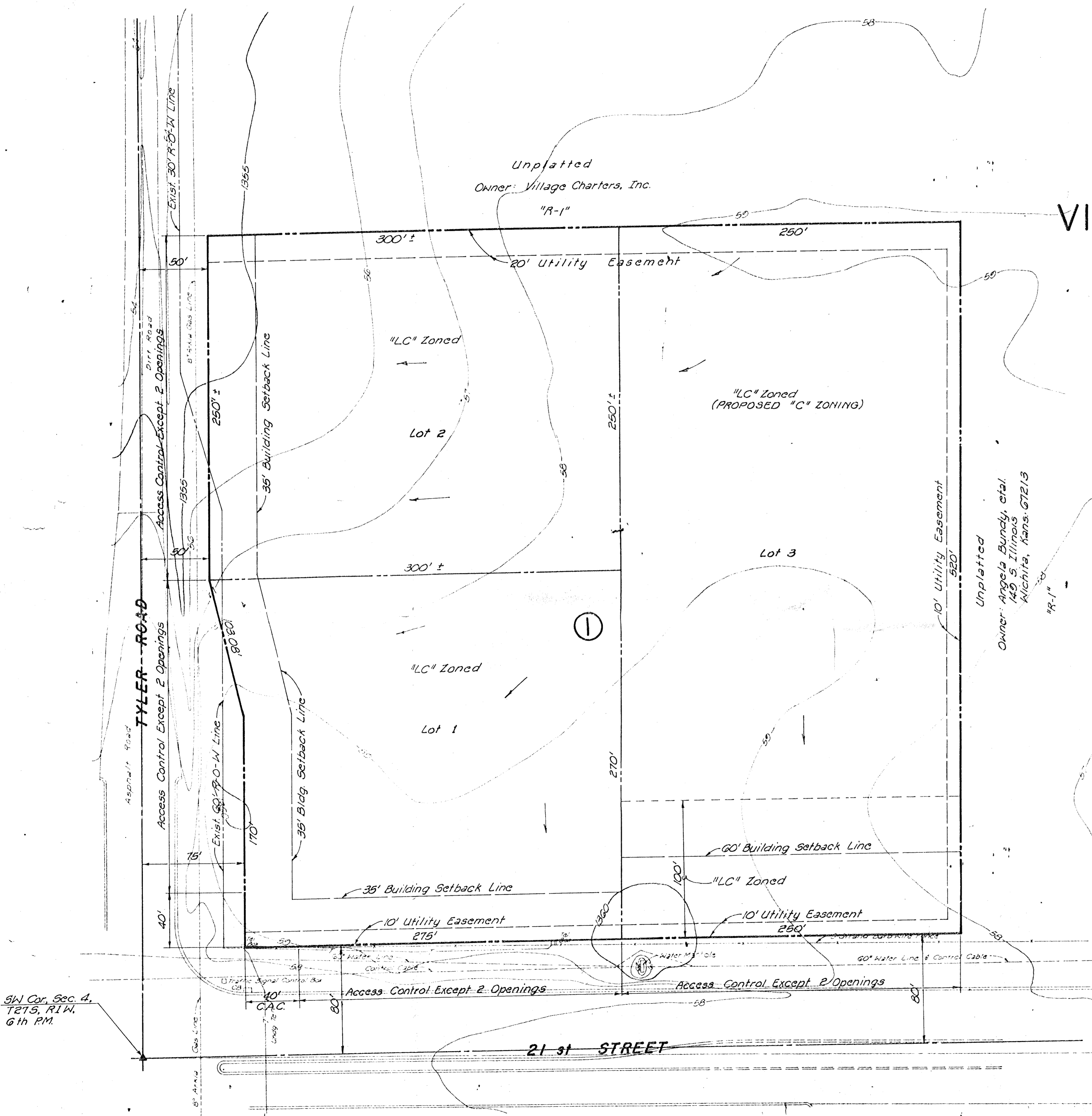


DRAINAGE CONCEPT / PLAN

VILLAGE CHARTERS ADDITION



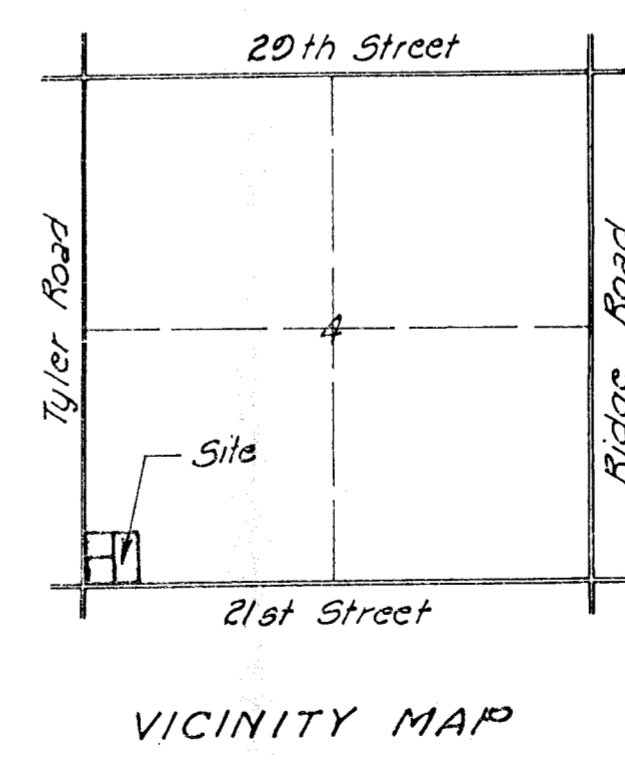
Owner: Village Charters, Inc.
2024 Amidon
Wichita, Kansas 67203

Engineer: Professional Engineering Consultants, P.A.
1440 E. English
Wichita, Kansas 67211

Scale: 1" = 40'
June 6, 1984
Date of Topo: April 26, 1984
Bench Mark: "D" on SW Corner
Waterline Manhole on 21st
Street El. 1362.95 MSL

Note: All lots shall be graded to drain to streets, gutters, ditches or existing storm sewers via drives, flumes, private storm sewers and/or other approved drainage facilities.

LEGEND
→ Proposed drainage direction.



SW Cor. Sec. 4,
T21S, R1W,
6th PM.