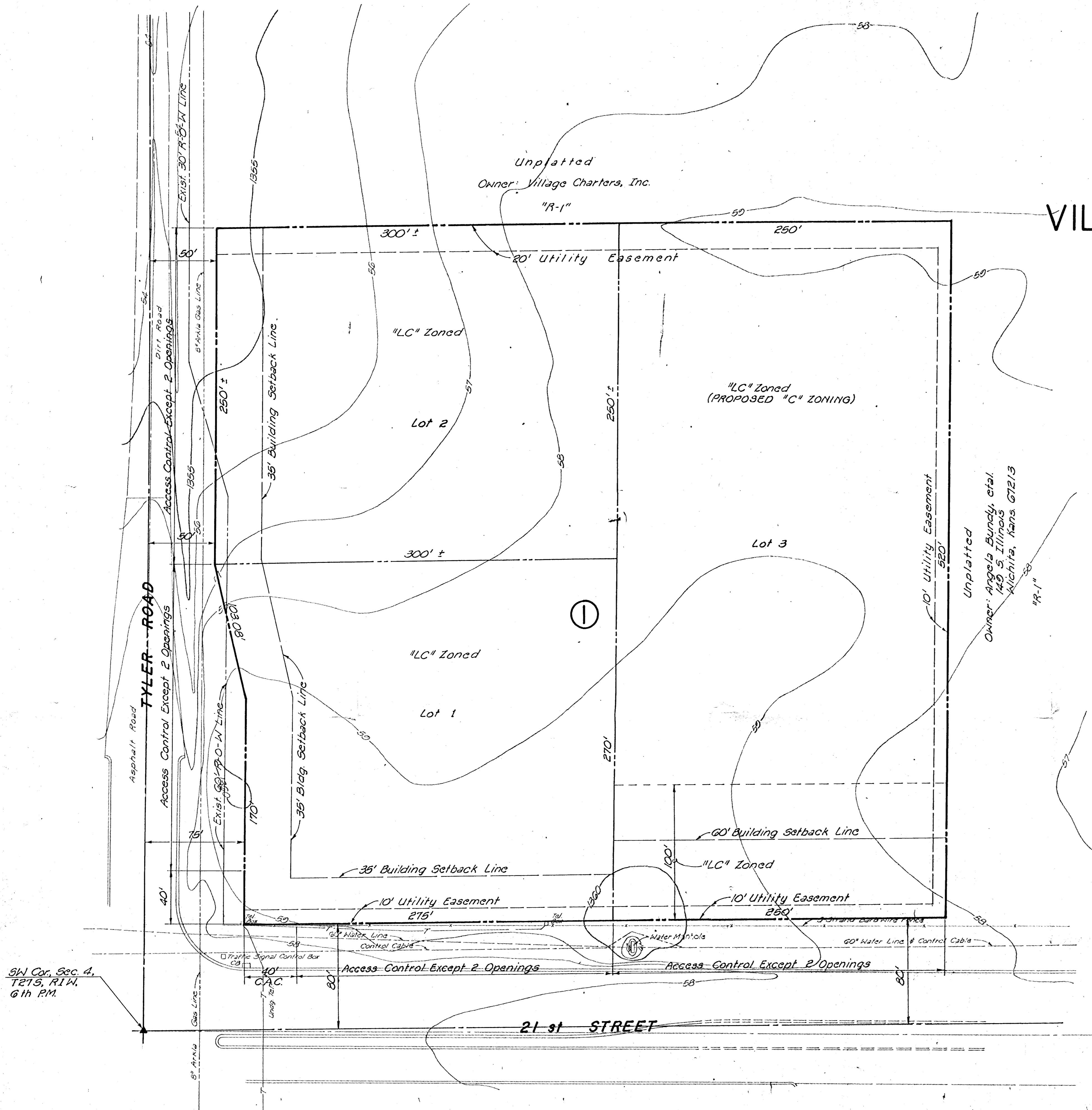


PRELIMINARY PLAT
VILLAGE CHARTERS ADDITION



SW Cor. Sec. 4,
T21S, R1W,
6th PM.

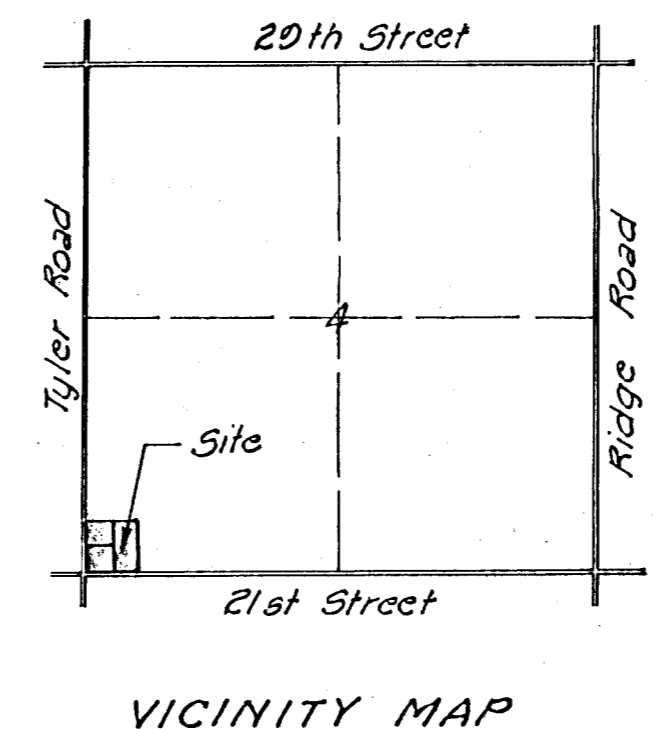
Unplatted
 Owner: Village Charters, Inc.
 "R-1"

Unplatted
 Owner: Angela Bundy, et al.
 149 S. Illinois
 Wichita, Kans. 67213
 "R-1"

Owner: Village Charters, Inc.
 2024 Amidon
 Wichita, Kansas 67203

Engineer: Professional Engineering Consultants, P.A.
 1440 E. English
 Wichita, Kansas 67211

Scale: 1" = 40'
 June 6, 1984
 Date of Topo - April 26, 1984
 Bench Mark - "Q" on SW Corner
 Waterline Manhole on 21st
 Street. El. 1302.25 MSL



2-1-105710K