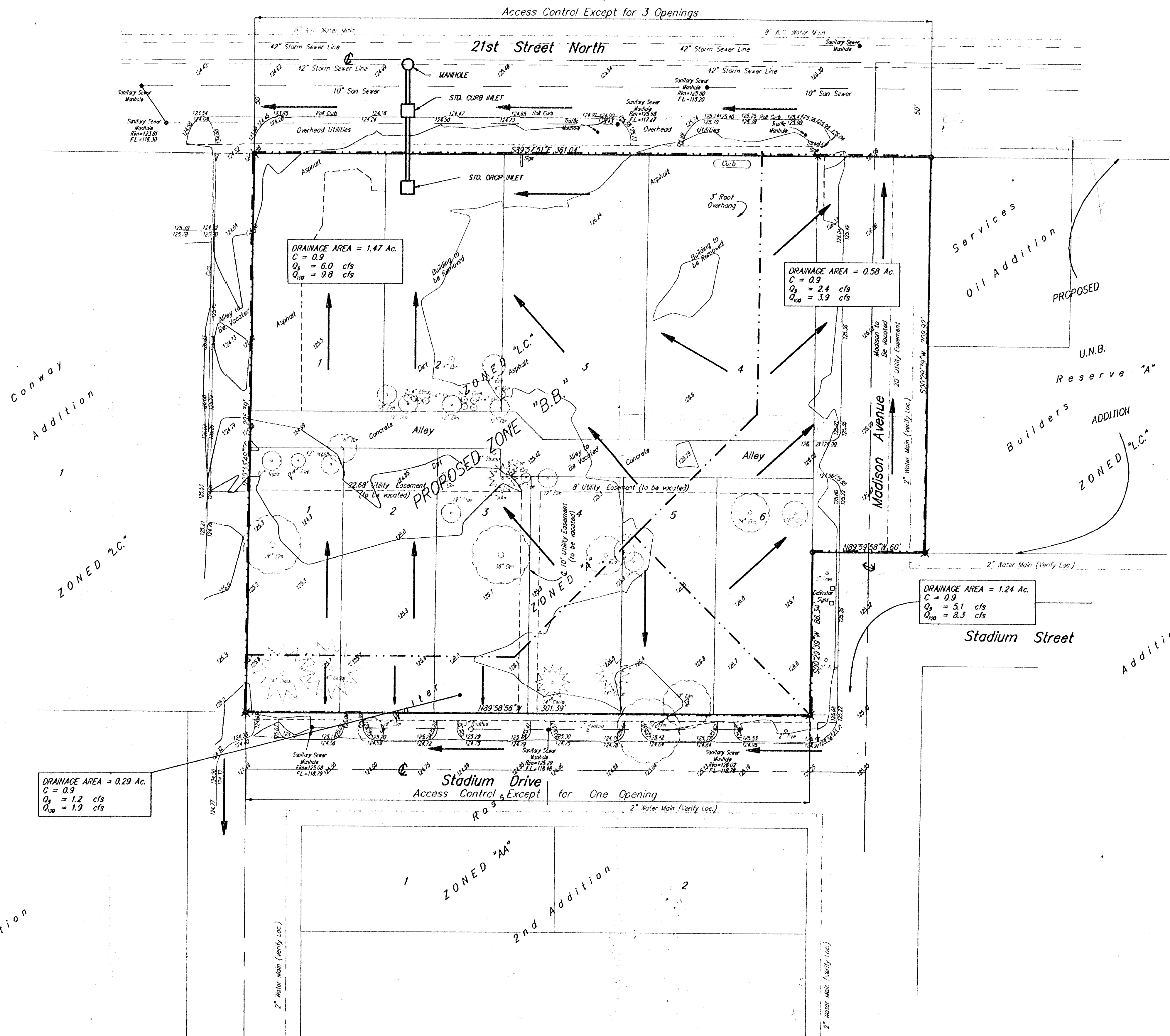


# DRAINAGE CONCEPT

## U.N.B. 2ND ADDITION

### WICHITA, SEDGWICK COUNTY, KANSAS



**LEGEND**

- = Baughman Rebar Set
- ✕ = 1/2" Iron Found
- ⊗ = Iron Found

**LEGAL DESCRIPTION**

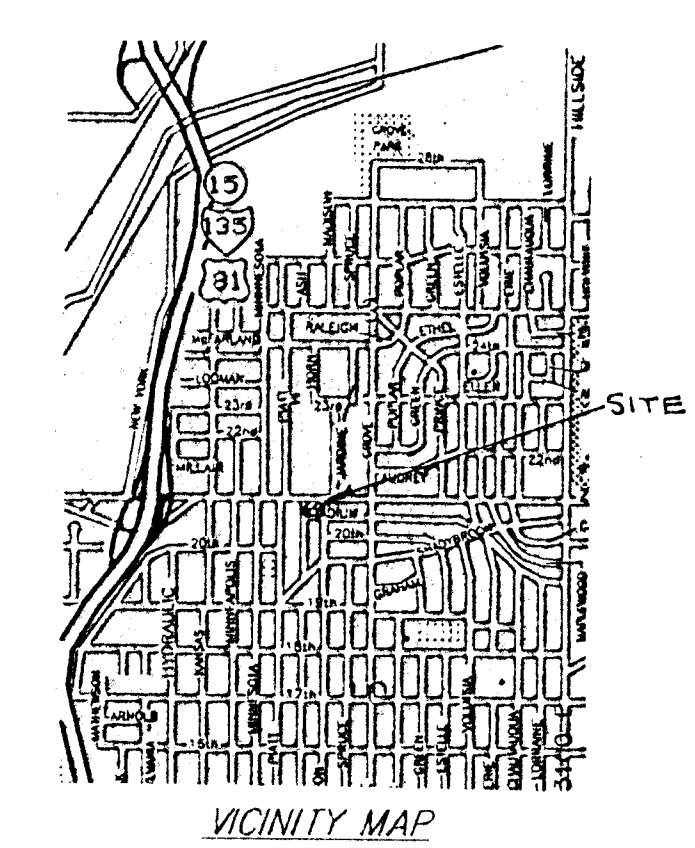
Lots 1, 2, 3, 4, Block 1, Elder Addition to Wichita, Sedgwick County, Kansas, including the 20 foot alley adjacent to the south, and Lots 1, 2, 3, 4, 5, 6, Block A, J. Walter Ross Second Addition, an addition to Wichita, Sedgwick County, Kansas, and Madison Avenue from the north line of Stadium to the south line of 21st Street North.

**OWNER**

City of Wichita  
455 N. Main  
Wichita, KS 67202

**BENCHMARK**

C.O.W. Brass Disc 41.08' South and 117.26' West of the centerlines of 21st Street North and Grove Street  
Elevation = 132.20' (City Datum)



Mar. 17, 1995