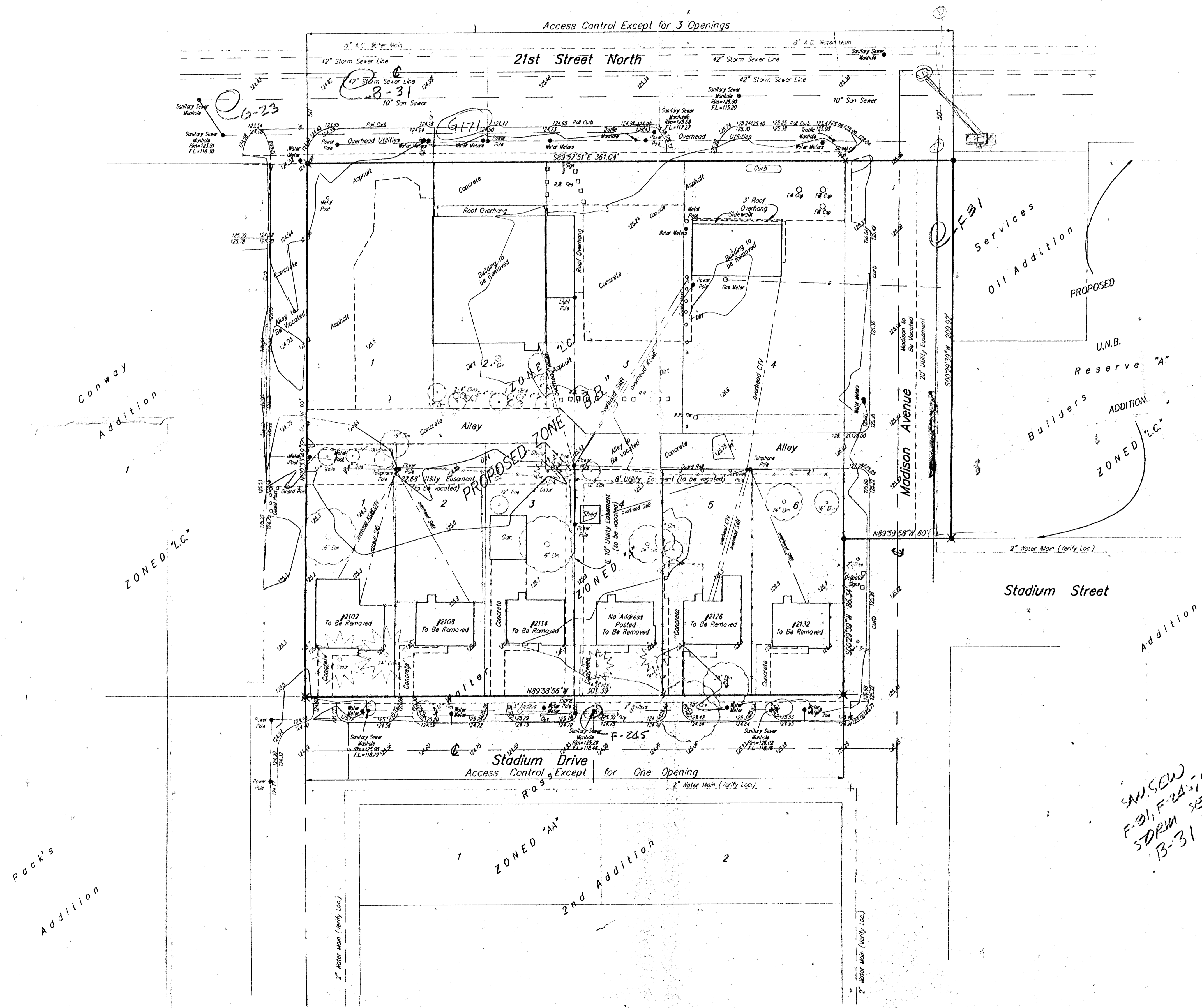


**PRELIMINARY PLAT**  
**U.N.B. 2ND ADDITION**  
**WICHITA, SEDGWICK COUNTY, KANSAS**



SCALE  
1" = 30'

**LEGEND**

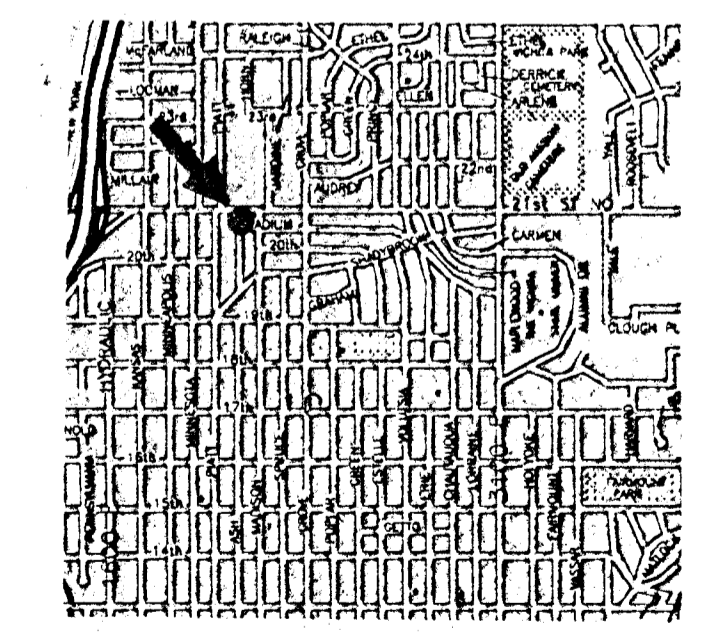
- = Baughman Rebar Set
- ✱ = 1/2" Iron Found
- = Iron Found

**LEGAL DESCRIPTION**

Lots 1, 2, 3, 4, Block 1, Elder Addition to Wichita, Sedgwick County, Kansas, including the 20 foot alley adjacent to the south, and Lots 1, 2, 3, 4, 5, 6, Block A, J. Walter Ross Second Addition, an addition to Wichita, Sedgwick County, Kansas, and Madison Avenue from the north line of Stadium to the south line of 21st Street North.

**OWNER**  
 City of Wichita,  
 455 N. Main  
 Wichita, KS 67202

**BENCHMARK**  
 C.O.W. Brass Disc 41.08' South and 117.26' West of the centerlines of 21st Street North and Grove Street  
 Elevation = 132.20'(City Datum)



VICINITY MAP

SAW SEW  
 F-31, F-24, G-23  
 SDRM SEW  
 B-31

Mar. 14, 1995