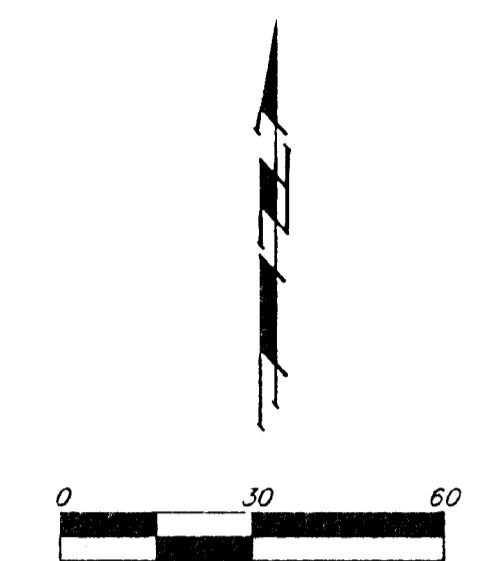
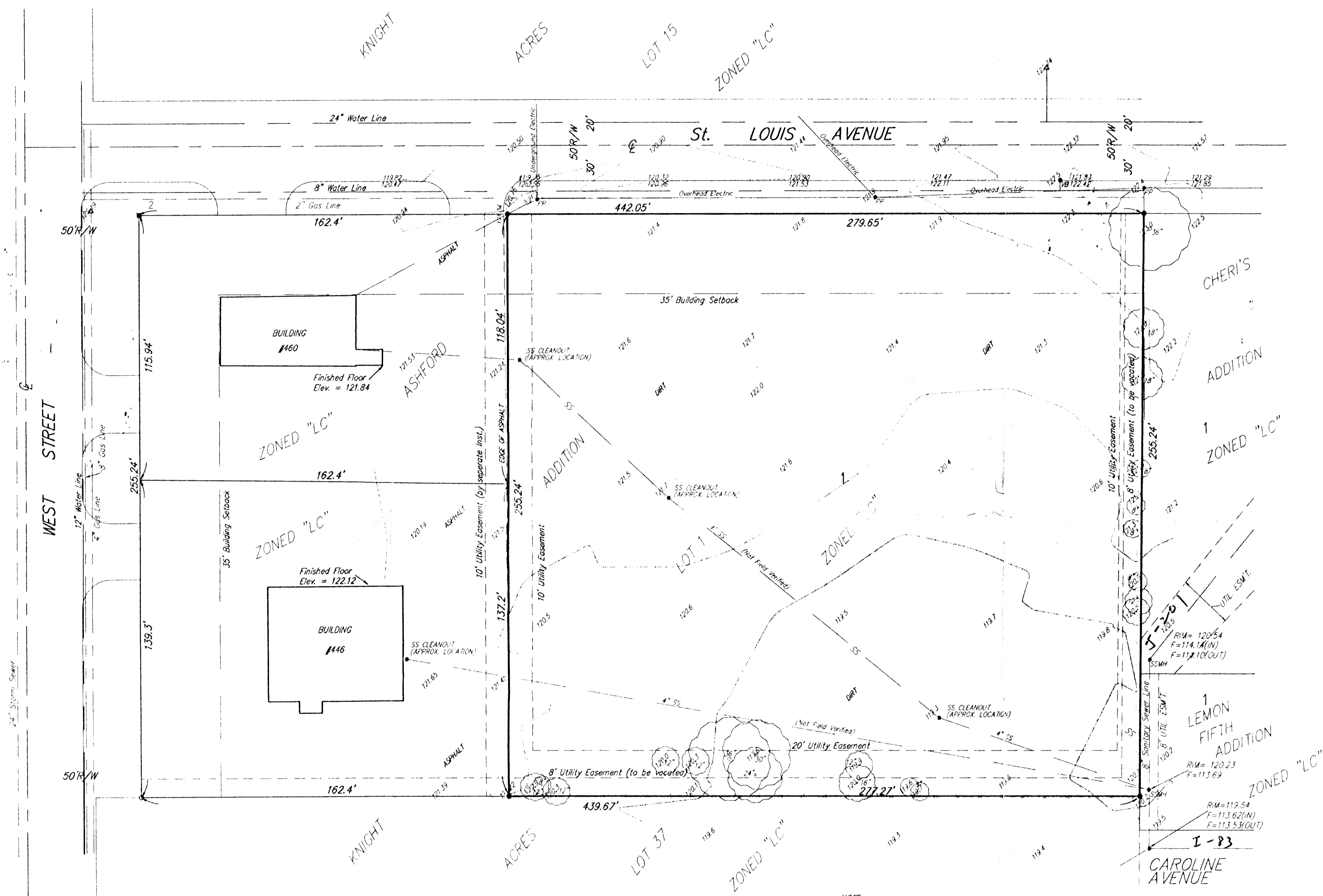


SKETCH PLAT STEEBY ADDITION WICHITA, SEDGWICK COUNTY, KANSAS



- LEGEND**
- = #4 Rebar w/ Baughman Cap (Set)
 - = 1/2" Iron Pipe (Found)
 - ⊕ = Valve Box
 - ⊙ = Sanitary Sewer Man Hole
 - ⊙ = Power Pole
 - △ = Fire Hydrant

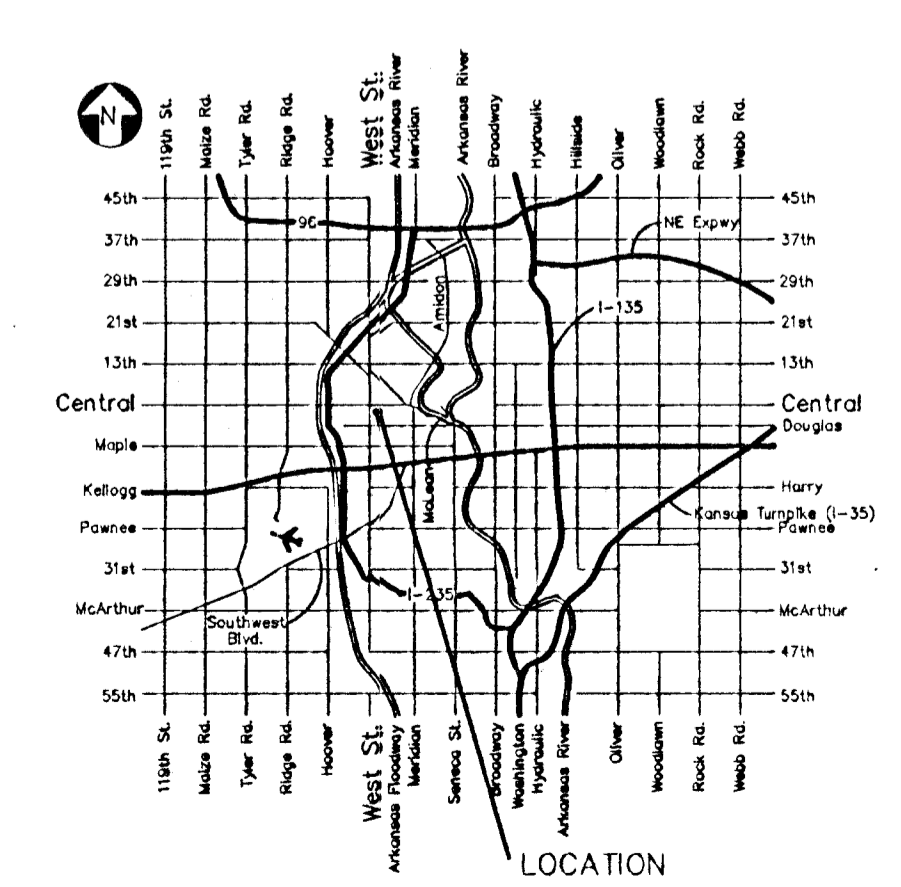
LEGAL DESCRIPTION
 Lot 1, Ashford Addition, Wichita, Kansas
 Except the west 162.4 feet thereof.

BENCHMARK
 "□" Cut top of curb adj. to SE
 Corner McPherson Addition.
 Elev. = 119.89

OWNER
 Carolyn G. Steeby, Sherman K. Steeby, John A. Steeby
 Attn: Carolyn G. Steeby
 801 N. Young
 Wichita, KS, 67212
 (316) 945-7790

NOTE:
 APPLICANT TO SUPPLY PRIVATE SANITARY
 SEWER SERVICE LINE AGREEMENT FOR SERVICE
 TO ADJACENT PROPERTIES.

MAIN 7, 55



VICINITY MAP