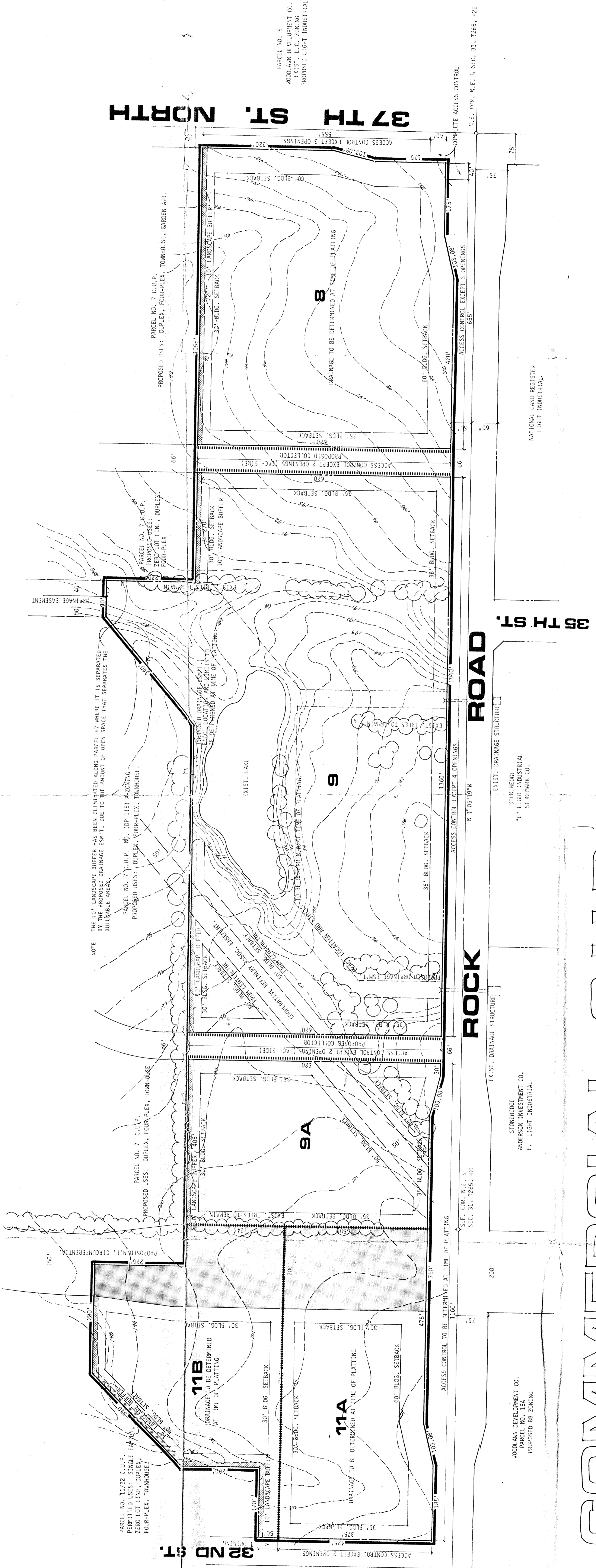
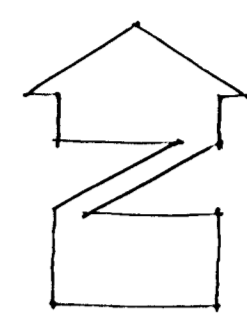


# GENERAL PROVISIONS



# COMMERCIAL C.U.P. PARCEL NOS. 8, 9, 9A & 11A, 11B



PRELIMINARY

OWNER: MODULAM DEVELOPMENT COMPANY, 4111 E. 37TH STREET NORTH, WICHITA, KS.

SCALE: 6" = 50' HORIZ. 1" = 50' VERT. 1" = 100' CONTOUR INTERVAL

**BILL G. YUNG DESIGN**  
 8225 E. 35TH ST. NORTH, WICHITA, KS 67226 316-683-5587

PARCEL NO. 5  
 MODULAM DEVELOPMENT CO.  
 EXIST. L.C. ZONING  
 PROPOSED LIGHT INDUSTRIAL

PARCEL NO. 7 C.U.P.  
 PROPOSED USES: DUPLEX, FOUR-PLEX, TOWNHOUSE, GARDEN APT.  
 PROPOSED USES: DUPLEX, FOUR-PLEX, DUPLEX

PARCEL NO. 7 C.U.P.  
 PROPOSED USES: DUPLEX, FOUR-PLEX, TOWNHOUSE  
 PROPOSED USES: DUPLEX, FOUR-PLEX, TOWNHOUSE

PARCEL NO. 7 C.U.P.  
 PROPOSED USES: DUPLEX, FOUR-PLEX, TOWNHOUSE  
 PROPOSED USES: DUPLEX, FOUR-PLEX, TOWNHOUSE

PARCEL NO. 7 C.U.P.  
 PROPOSED USES: DUPLEX, FOUR-PLEX, TOWNHOUSE  
 PROPOSED USES: DUPLEX, FOUR-PLEX, TOWNHOUSE

PARCEL NO. 11A  
 PERMITTED USES: SINGLE FAMILY  
 ZERO LOT LINE, DUPLEX,  
 FOUR-PLEX, TOWNHOUSE

MODULAM DEVELOPMENT CORP.  
 PARCEL NO. 11A  
 ZONING: C-1

MODULAM DEVELOPMENT CO.  
 ANDERSON INVESTMENT CO.  
 E. LIGHT INDUSTRIAL

MODULAM DEVELOPMENT CO.  
 PROPOSED BR. ZONING

STONELINE  
 STRONGER  
 "E" LIGHT INDUSTRIAL  
 STRONMARK CO.  
 E. LIGHT INDUSTRIAL

NATIONAL CASH REGISTER  
 LIGHT INDUSTRIAL

ACCESS CONTROL EXCEPT 2 OPENINGS

ACCESS CONTROL EXCEPT 3 OPENINGS

ACCESS CONTROL EXCEPT 3 OPENINGS

ACCESS CONTROL EXCEPT 4 OPENINGS

COMPLETE ACCESS CONTROL

S.E. COR. N.E. 1/4, SEC. 31, T26S, 24E

N.T. 100 W. 1/4

32ND ST.

37TH ST.

37TH ST. NORTH

ROCK ROAD