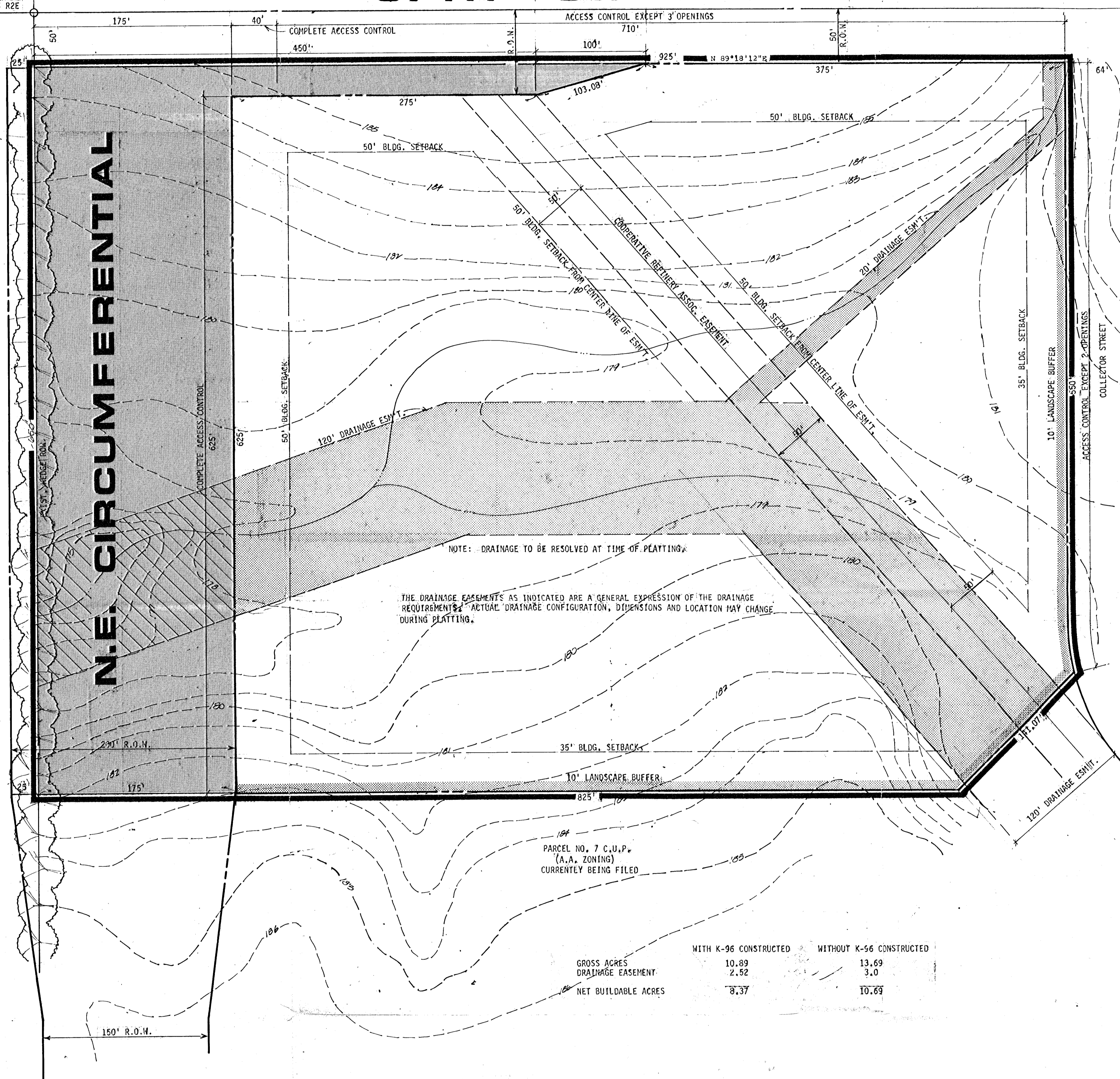


WOODLAWN DEVELOPMENT CO.
PROPOSED LIGHT INDUSTRIAL

GENERAL PROVISIONS

37TH ST. NORTH



N.E. CIRCUMFERENTIAL

NOTE: DRAINAGE TO BE RESOLVED AT TIME OF PLATTING.

THE DRAINAGE EASEMENTS AS INDICATED ARE A GENERAL EXPRESSION OF THE DRAINAGE REQUIREMENTS. ACTUAL DRAINAGE CONFIGURATION, DIMENSIONS AND LOCATION MAY CHANGE DURING PLATTING.

	WITH K-96 CONSTRUCTED	WITHOUT K-56 CONSTRUCTED
GROSS ACRES	10.89	13.69
DRAINAGE EASEMENT	2.52	3.0
NET BUILDABLE ACRES	8.37	10.69

COMMERCIAL C.U.P.

PARCEL NO. 6

OWNER: WOODLAWN DEVELOPMENT CO., 4111 E. 37TH STREET NORTH, WICHITA, KS

20th Nov. 11, 2011

50' 25' 0 50' 100' 150' 1' CONTOUR INTERVAL



BILL G. YUNG DESIGN
1365 NORTH WACO WICHITA, KANSAS 67203 316-264-0676