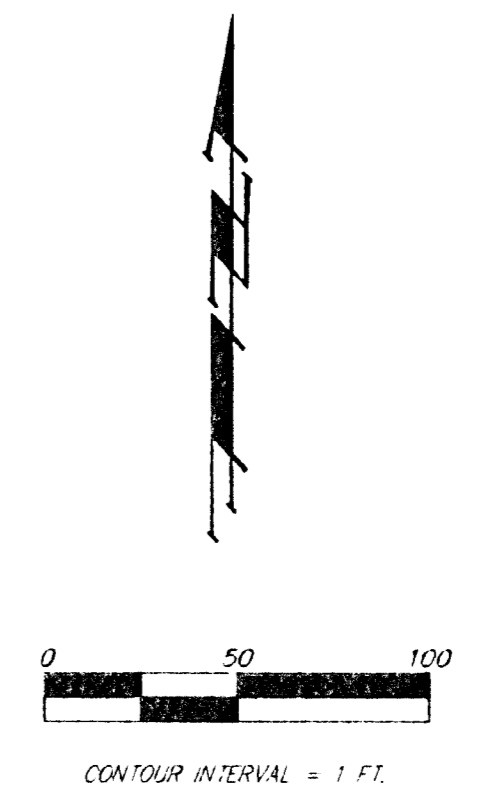
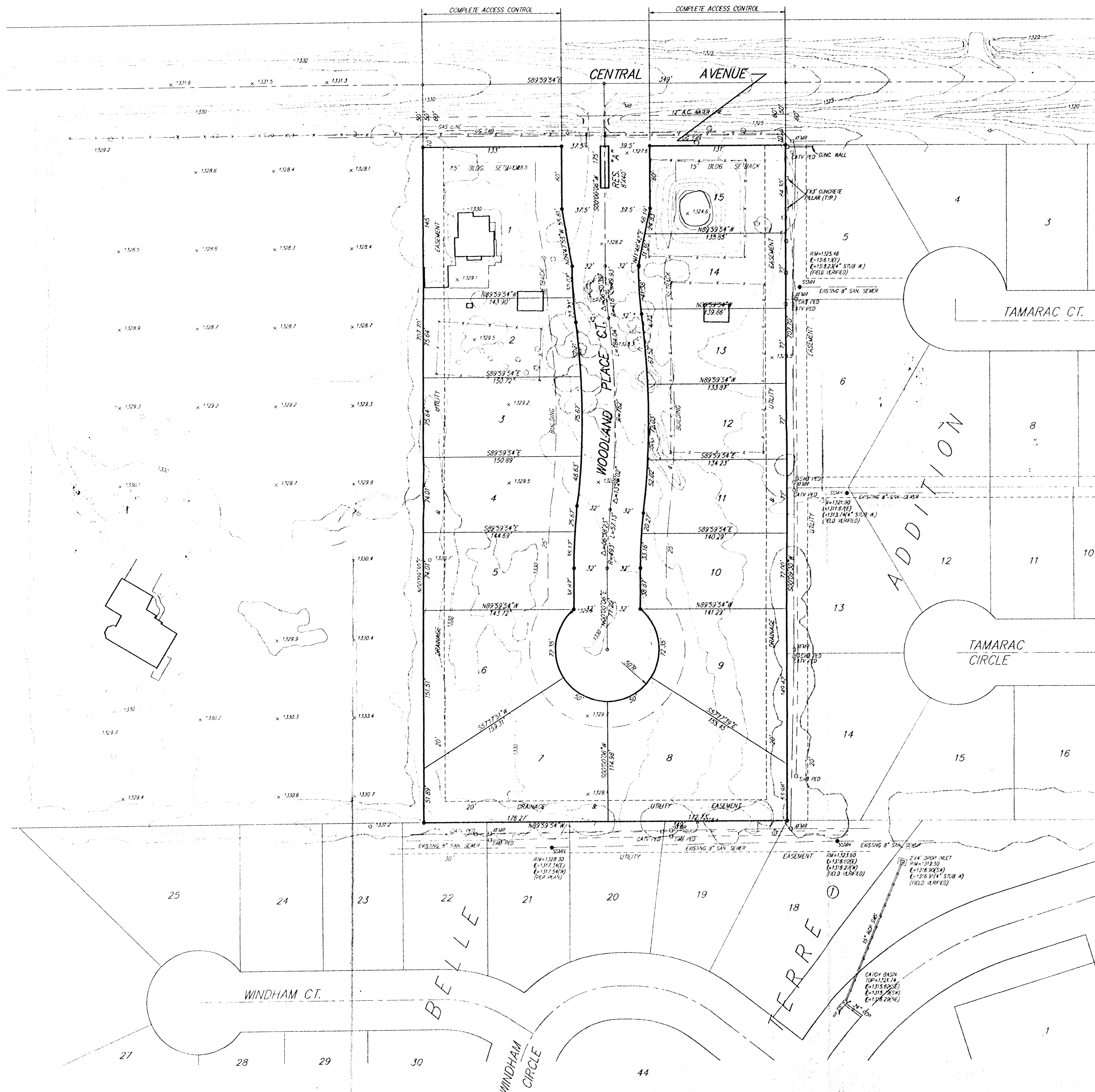


PRELIMINARY PLAT  
**WOODLAND PLACE ADDITION**  
 SEDGWICK COUNTY, KANSAS



- LEGEND:**
- #4 REBAR W/ "BAUGHMAN" CAP (SET)
  - ELEC. BOX
  - SWB PED = SOUTHWESTERN BELL PEDESTAL
  - CATV PED = CABLEVISION PEDESTAL
  - SAN = SANITARY SEWER MANHOLE
- SANITARY SEWER LINE  
 --- ELECTRIC LINE  
 --- GAS LINE  
 --- WATER LINE  
 --- SOUTHWESTERN BELL LINE  
 --- CABLEVISION LINE  
 --- FENCE

**OWNER:**  
 NIES BUILDER, INC.  
 CLIFFORD A. NIES  
 9415 E. HARRY  
 WCH17A, KS 67207  
 PH# 316-684-0161

**LEGAL DESCRIPTION:**  
 THE WEST 750 FEET OF THE NORTH 707.7 FEET OF THE NE 1/4 OF SEC. 24, TWP. 27-S, R-2-E OF THE 6TH P.M., SEDGWICK COUNTY, KANSAS, EXCEPT THE WEST 401 FEET THEREOF AND EXCEPT THE NORTH 50 FEET THEREOF FOR ROAD.

**BENCHMARK:**  
 CENTRAL & BELLE TERRE - RR SPIKE IN N. FACE OF POWER POLE  
 12' N. & 2' W. OF THE NE. COR. OF RES. "C", BELLE TERRE ADDITION  
 ELEV. = 1316.17 M.S.L.

