

N.W. COR., N.E. 1/4, SEC. 3

36" x 24" RCBC
US FL = 90.85
DS FL = 90.30

N. 89° 24' 17" E.
2651.93'

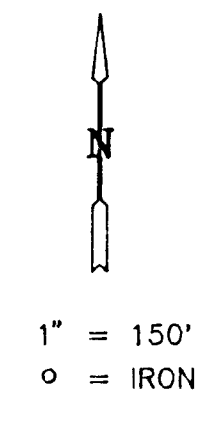
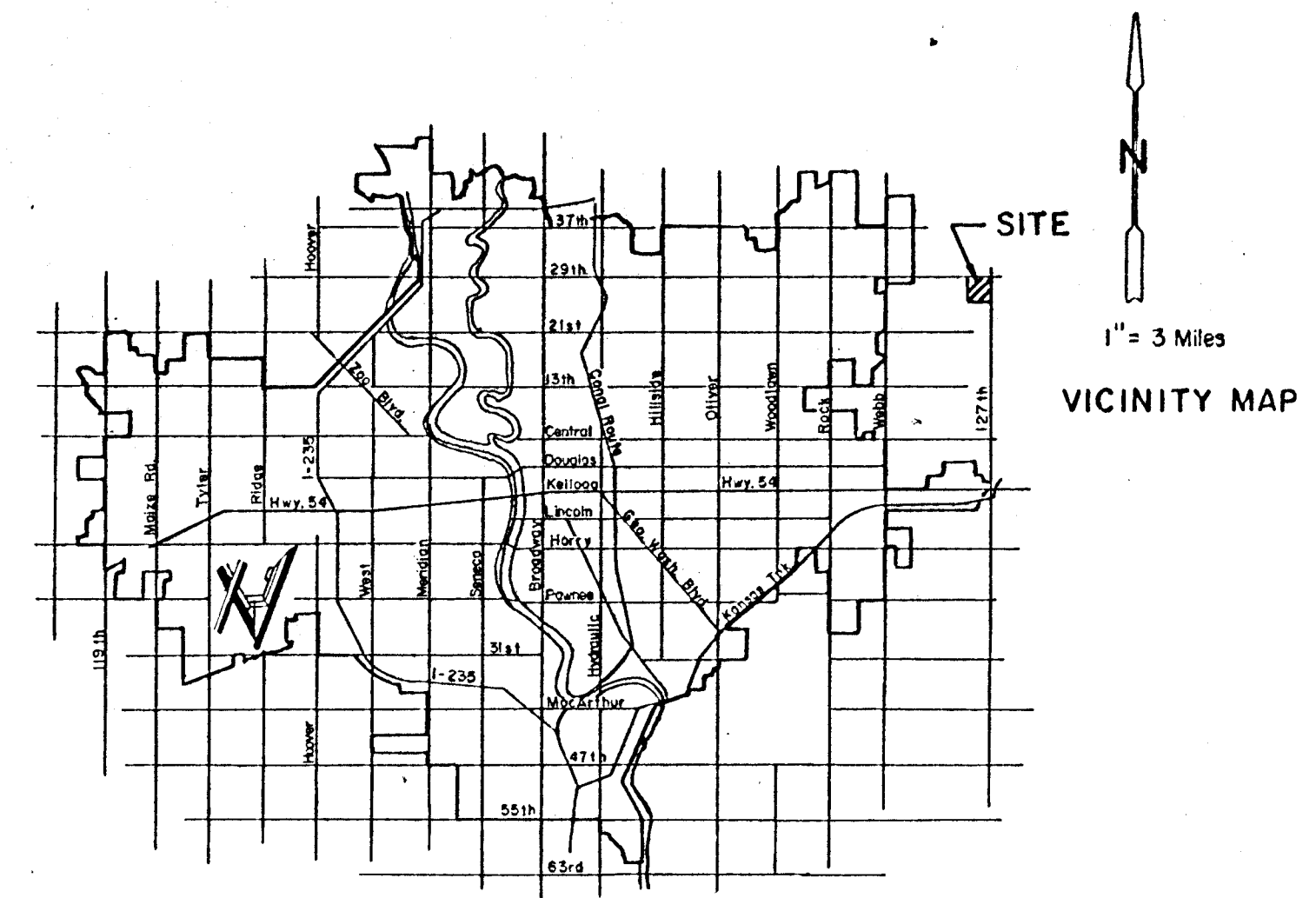
BUTLER COUNTY
RURAL WATER
DISTRICT # 5

1-36" CMP
1-45" x 30" CMPA
US FL = 79.23
DS FL = 79.17

N.E. COR., N.E. 1/4,
SEC. 3-27-2E

2-36" x 21" CMPA
W/CONC. HDWL'S.
TOP = 82.09
US FL = 78.61
DS FL = 77.58

BUTLER COUNTY
RURAL WATER
DISTRICT # 5



PRELIMINARY PLAT OF WOODS ESTATES SEDGWICK COUNTY, KANSAS

THE N.E. 1/4 OF SECTION 3, TOWNSHIP 27S., RANGE 2 EAST,
OF THE 6TH P.M., SEDGWICK COUNTY, KANSAS

LEGEND

- W = WATER MAIN
- OE = OVERHEAD ELECTRIC
- UT = UNDERGROUND TELEPHONE
- TSB = TELEPHONE SPLICE BOX
- UP = UTILITY POLE
- B.S.L. = BUILDING SETBACK LINE

BENCHMARKS

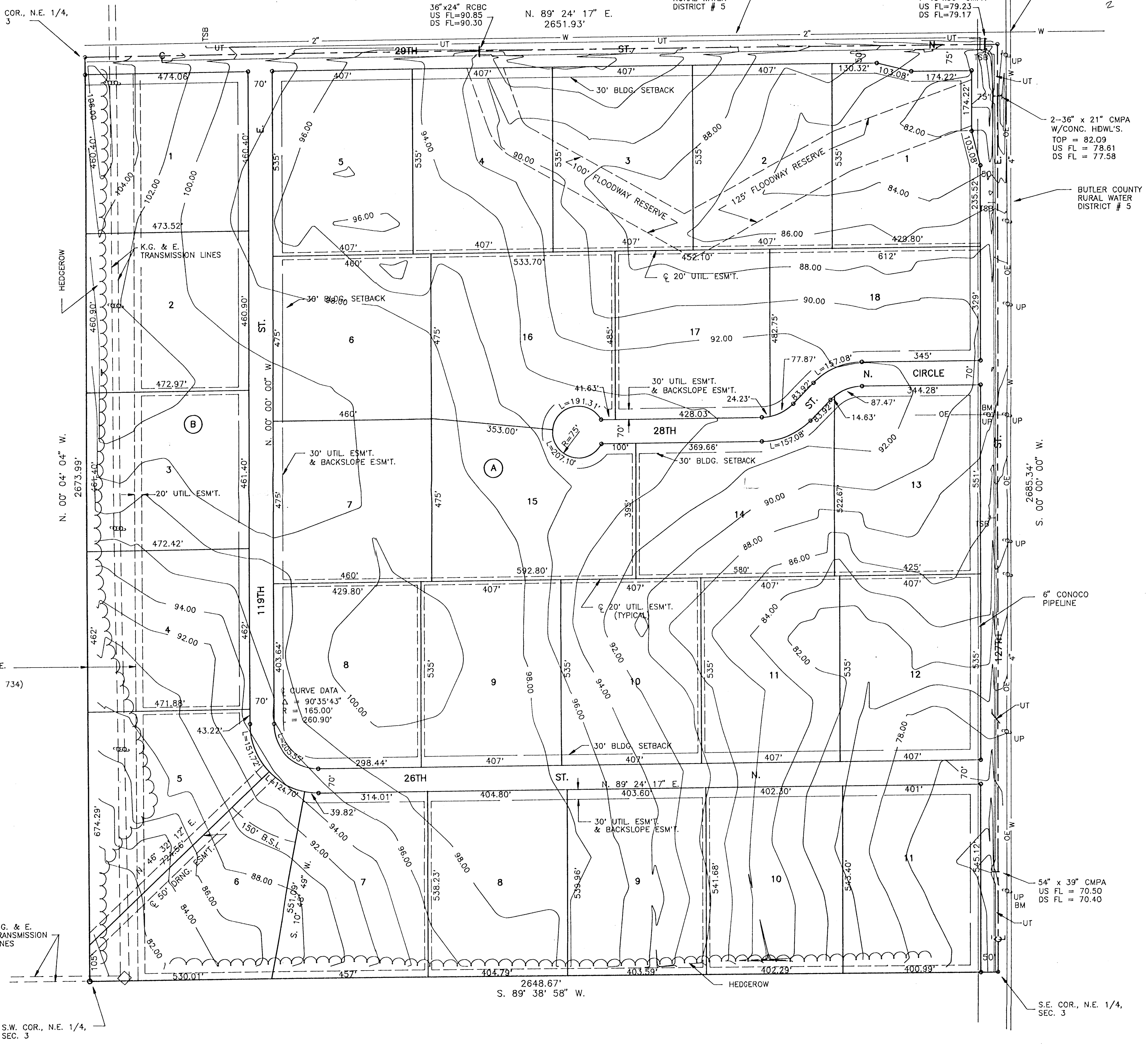
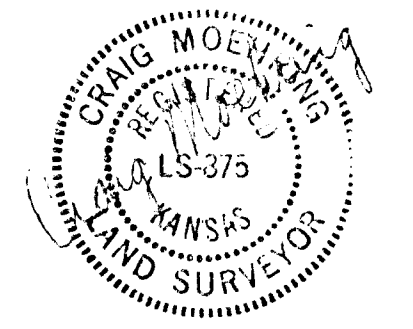
RR SPIKE IN HLP 40' SOUTH AND 25' EAST OF THE SE CORNER SECTION 3-27-2E. ELEV. = 1383.24 M.S.L.

60D SPIKE IN HLP 230' NORTH AND 25' EAST OF THE E. 1/4 CORNER SECTION 3. ELEV. = 1373.97 M.S.L.

SQUARE CUT ON CENTER OF WEST HUBGUARD, 150' SOUTH OF THE NE CORNER OF SECTION 3. ELEV. = 1382.09 M.S.L.

EAST END CONC. SPILLWAY OF CONC. DITCH CHECK, NORTH SIDE OF 29TH ST. N., 1/4 MILE WEST OF 127TH ST. E. ELEV. = 1393.19 M.S.L.

MOEHRING & ASSOCIATES
CONSULTING ENGINEERS
WICHITA
SEPTEMBER 14, 1995



140' K.G. & E. EASEMENT (FILM 52, PG. 734)

K.G. & E. TRANSMISSION LINES

S.W. COR., N.E. 1/4, SEC. 3

S.E. COR., N.E. 1/4, SEC. 3