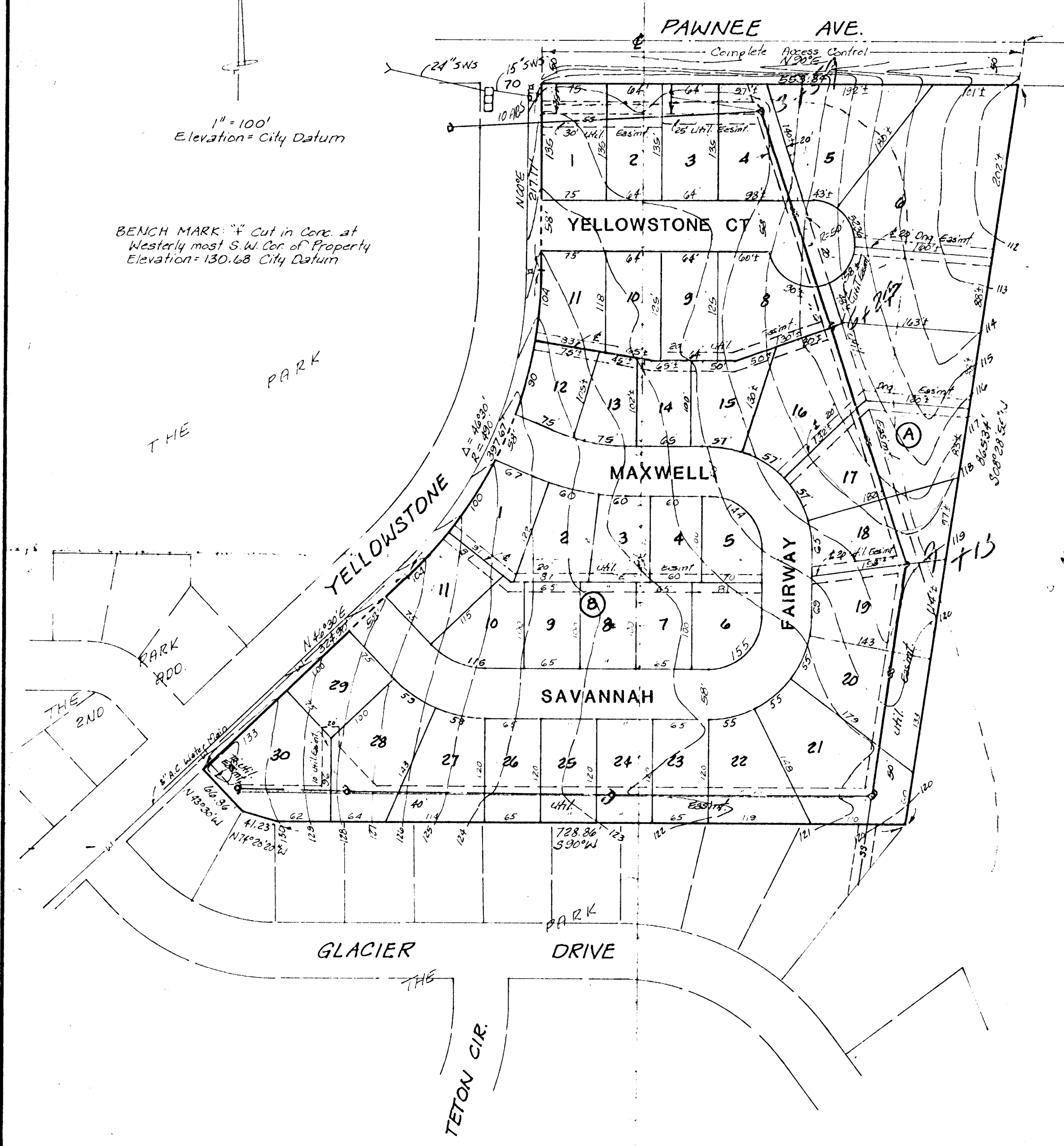


10

C-264

1" = 100'
Elevation = City Datum

BENCH MARK: ∇ Cut in Core at
Westerly most S.W. Cor. of Property
Elevation = 130.68 City Datum



PRELIMINARY PLAT

WOODLAND AT THE PARK

REPLAT OF LOT 1, BLK 4, THE PARK AN ADDITION
TO WICHITA, SEDGWICK COUNTY, KANSAS

OWNER: JOHN S. LEWIS
GENEVA J. LEWIS