

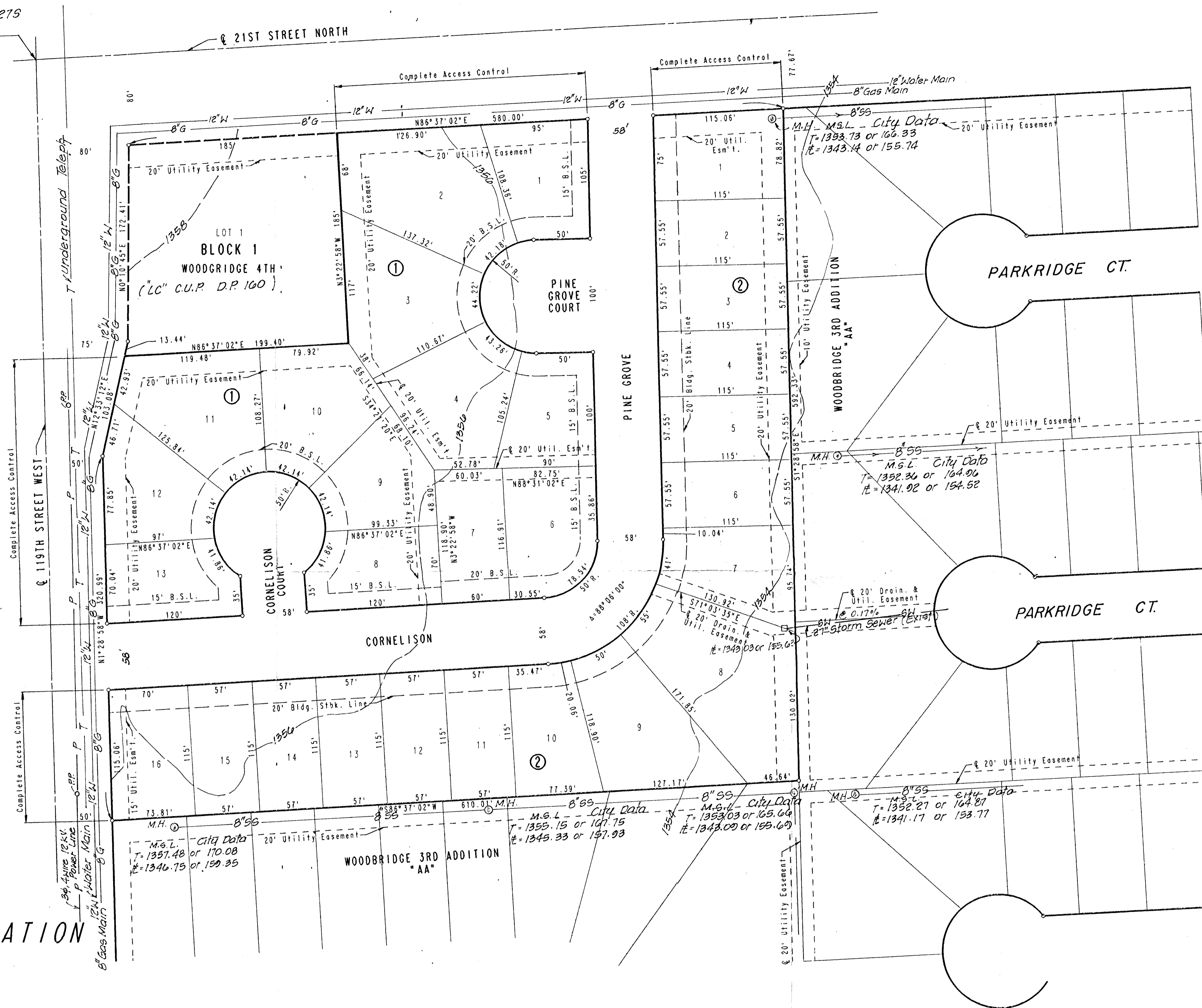
N.W. Cor. Sec 7, T21S
R1W of 6th P.M.

E 21ST STREET NORTH



SCALE: 1"=50'
Date of Topo Nov. 1980
City of Wichita B.M. Disc 70 Ft.
So. of North line Sec. 7, T21S, R1W
E 49 Ft. East of E 119th St. West.
C.I. = 172.08 City Datum
= 1359.48 m.s.l.

Date: April the 8th 1992



PRELIMINARY PLAT OF WOODBRIIDGE 6TH ADDITION

OWNER/DEV: SLAWSON INVESTMENT CORPORATION
C/O LARRY A. CHAMBERS
104 S. BROADWAY
WICHITA, KANSAS 67202

ENGINEER: PROFESSIONAL ENGINEERING CONSULTANTS, P.A.
303 S. TOPEKA
WICHITA, KANSAS 67202