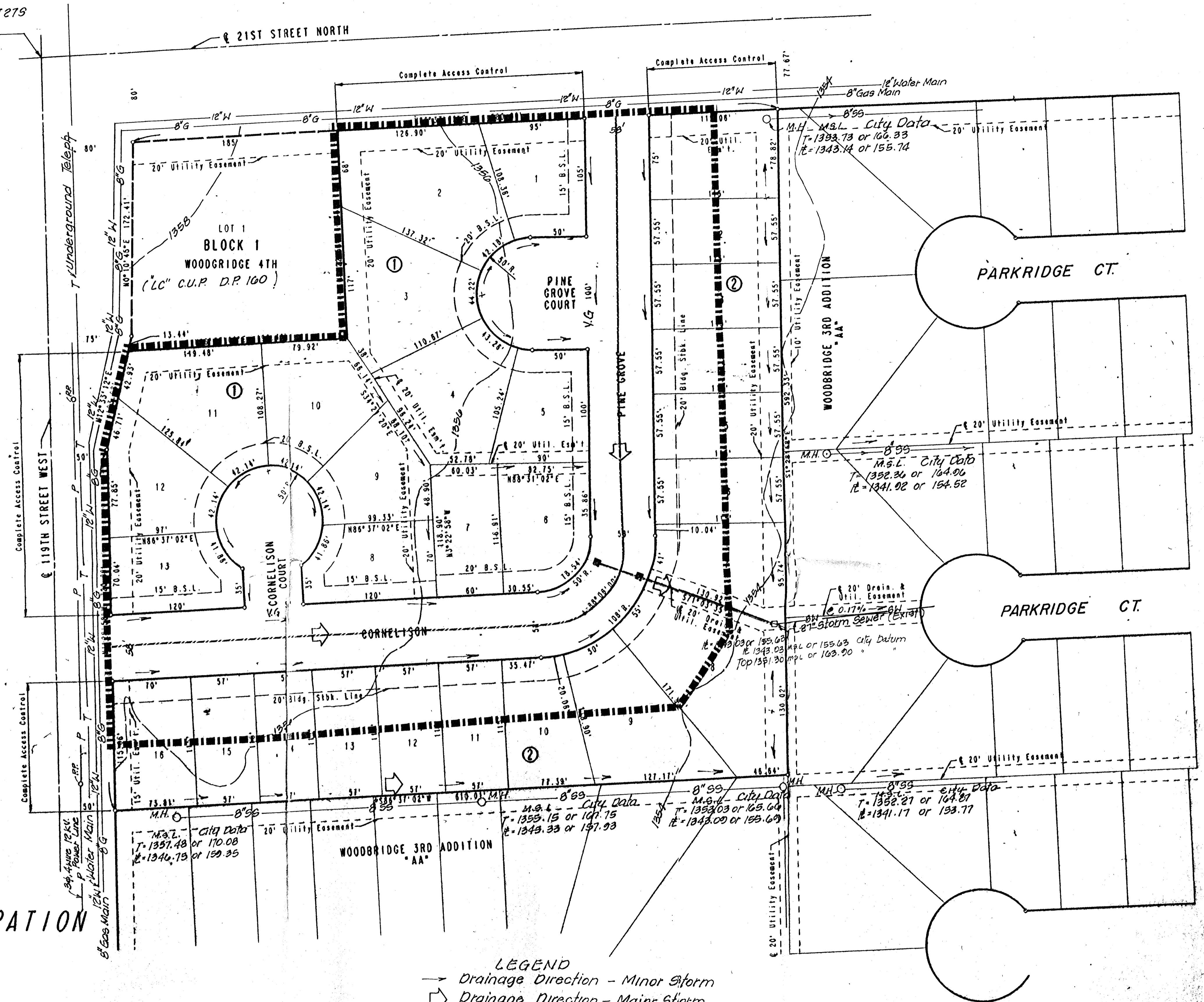


N.W. Cor. Sec 7, T27S
R1W of 6th P.M.

SCALE: 1"=50'
Date of Topo Nov. 1986
City of Wichita B.M. Dirc 70 H.
90. of North line Sec. 7, T27S, R1W
& 49 H. East of & 110 H. St. West.
E.L. = 172.00 City Datum
= 1350.48 m.s.l.
Date: April the 6th 1992



DRAINAGE CONCEPT 4/92
WOODBIDGE 6TH ADDITION

OWNER/DEV: SLAWSON INVESTMENT CORPORATION
C/O LARRY A. CHAMBERS
104 S. BROADWAY
WICHITA, KANSAS 67202

ENGINEER: PROFESSIONAL ENGINEERING CONSULTANTS, P.A.
303 S. TOPEKA
WICHITA, KANSAS 67202

- LEGEND**
- Drainage Direction - Minor Storm
 - ⇨ Drainage Direction - Major Storm
 - Proposed Storm Water Sewer
 - ▬ Drainage Basin Boundary
 - - - Drainage Sub-Basin Boundary