

NOTES:

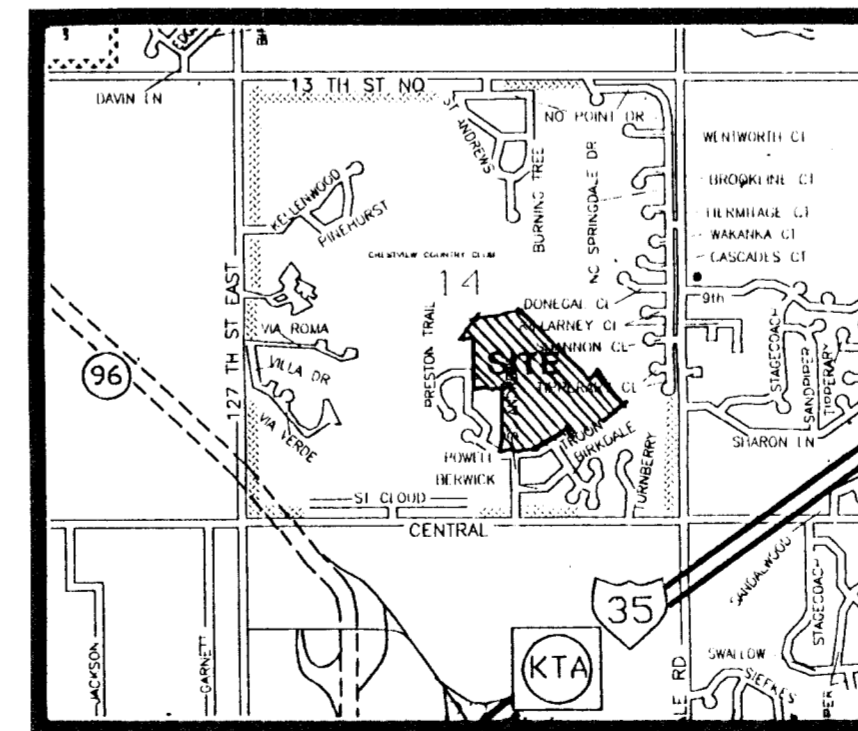
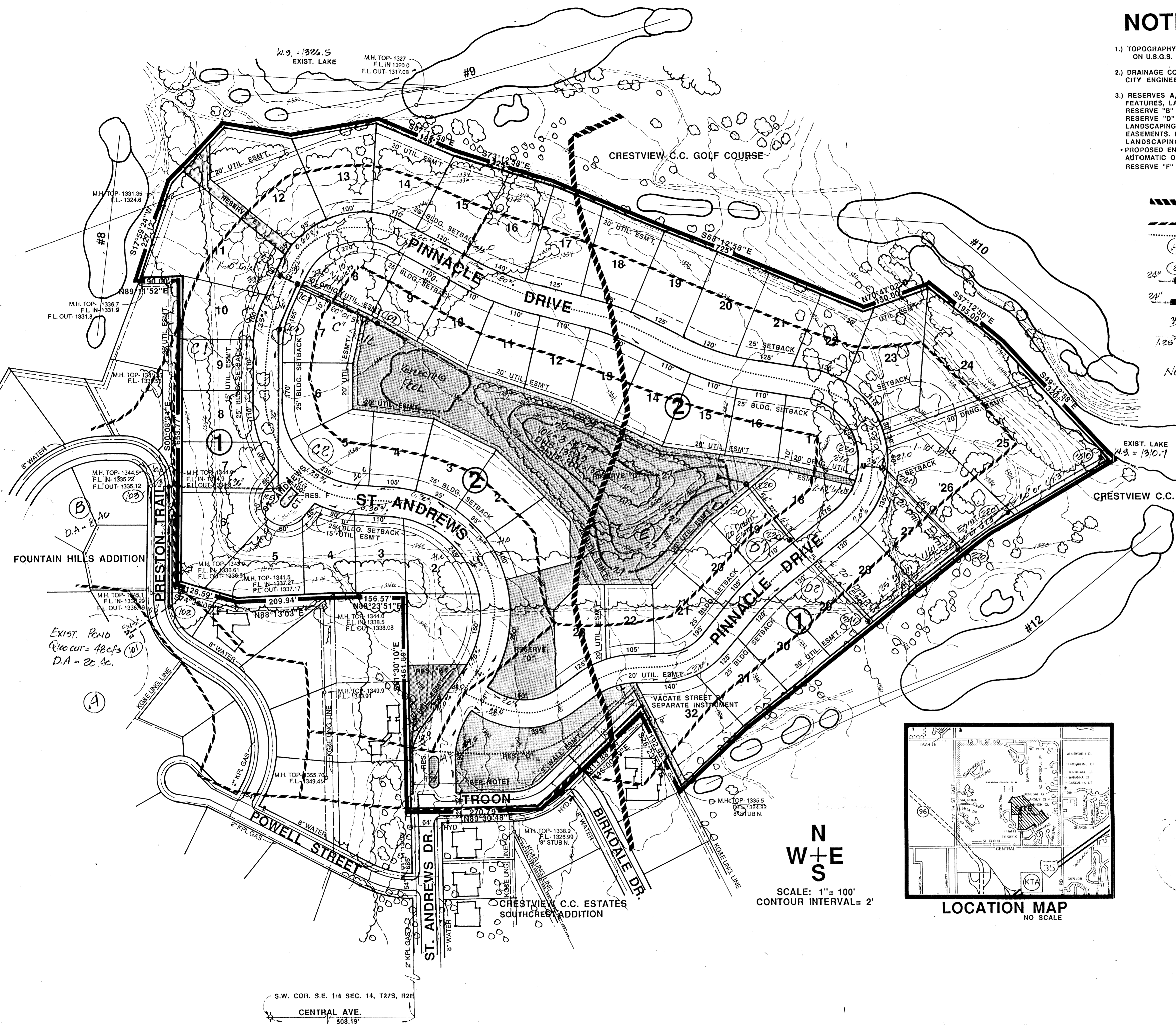
- 1) TOPOGRAPHY OBTAINED AUG. 10, 1991. 2' CONTOUR INTERVALS ARE BASED ON U.S.G.S. DATUM.
- 2) DRAINAGE CONCEPT PLAN TO BE PREPARED BY P.E.C. AND SUBMITTED TO CITY ENGINEER.
- 3) RESERVES A,B,&C, TO PERMIT ENTRY MONUMENTS, GATES, ENTRY FEATURES, LANDSCAPING, WALKS, DRAINAGE AND UTILITIES CONFINED TO ESM'TS, RESERVE "B" SHALL ALSO PERMIT ACCESS TO ABUTTING LOTS ON WEST. RESERVE "D" SHALL PERMIT WATER FEATURES, DRAINAGE STRUCTURES, LANDSCAPING, WALKS, GAZEBOS AND DRAINAGE AND UTILITIES CONFINED TO EASEMENTS. RESERVE "E" TO PERMIT GOLF COURSE ACCESS DRIVE LANDSCAPING AND UTILITIES.
 • PROPOSED ENTRY GATE AT ST. ANDREWS AND TROON TO BE OPERATED BY A AUTOMATIC OPENER THAT OPENS UPON APPROACH.
 RESERVE "F" SHALL PERMIT LANDSCAPING AND UTILITIES.

LEGEND

- SOG Soil Group Boundary
- Major Drainage Crest
- Minor Drainage Crest
- Drainage Basin Designation
- Node Designation
- Prop. Storm Sewer Manhole & Line Size
- Prop. Storm Sewer Inlet & Line Size
- Top Curb Elev. (Add 1300)
- Flow Direction & Longitudinal Street grade.

Note: - Top of M.H., F.L. in & F.L. cut shown on all existing Manholes
 All Storm Sewers designed for the 100 year Design Storm, and shall be reinforced concrete. Sheet cross-slope shall be 3/8 in/ft. Curb to be 6% in. Std. C.O.W. Type. Inlets to be C.O.W. Type 1A.

3.M. 60 D nail in Highline Pole
 275' West & 40' South of S 1/4 Cor. Sec. 14, T27S, R2E 6th P.M.
 Elev. = 1366.30 m.s.l.

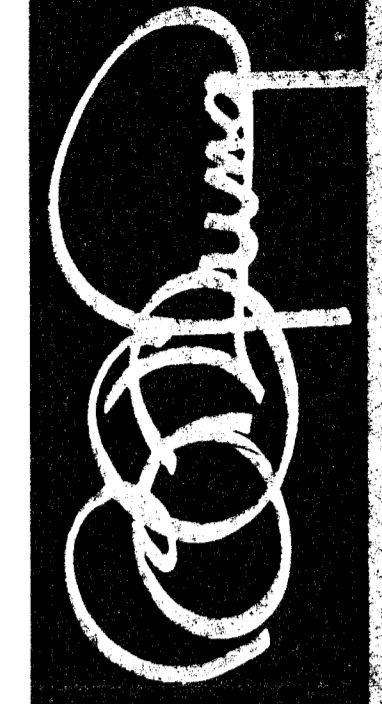


SCALE: 1" = 100'
 CONTOUR INTERVAL = 2'

DRAINAGE PLAN

THE PINNACLE AT CRESTVIEW

OWNER: RITCHIE ASSOCIATES, 8100 E. 22ND ST. NORTH BLDG. 1000, WICHITA, KANSAS 67226 PH:316-684-7300



BILL G. YUNG DESIGN
 WICHITA, KS 67220
 600 E. 20TH STREET, NORTH
 316-684-6207

DATE: 10/1/91
 REV. 10/1/91

SHEET TITLE
 THE PINNACLE AT CRESTVIEW

PROJECT

SHEET