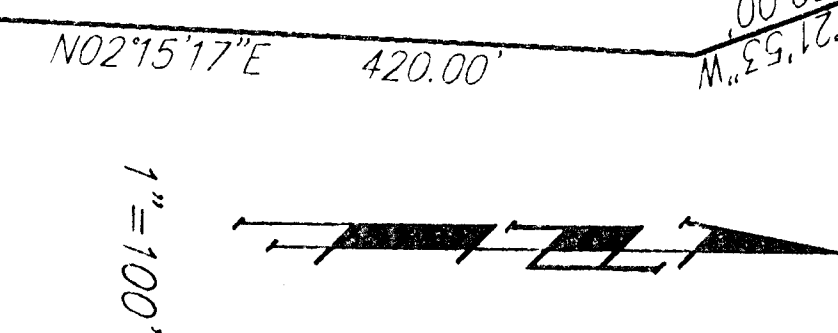
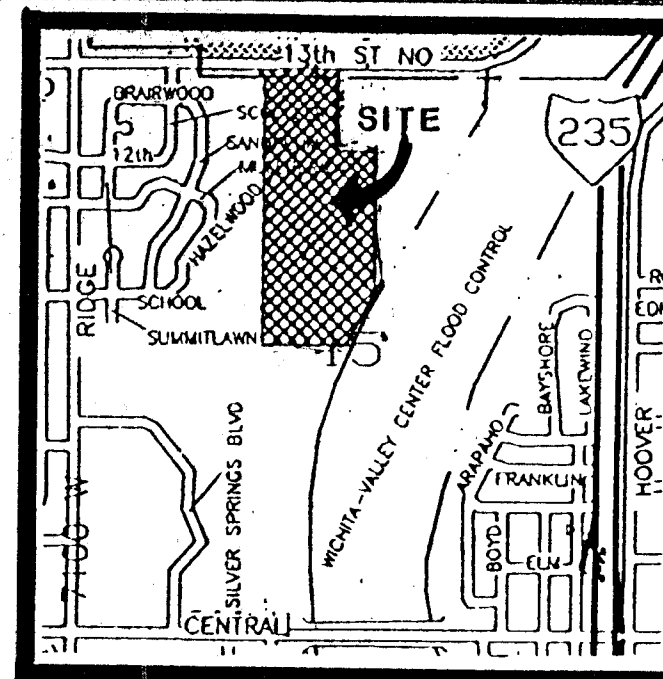


ZONED R-6  
CUP DP-26

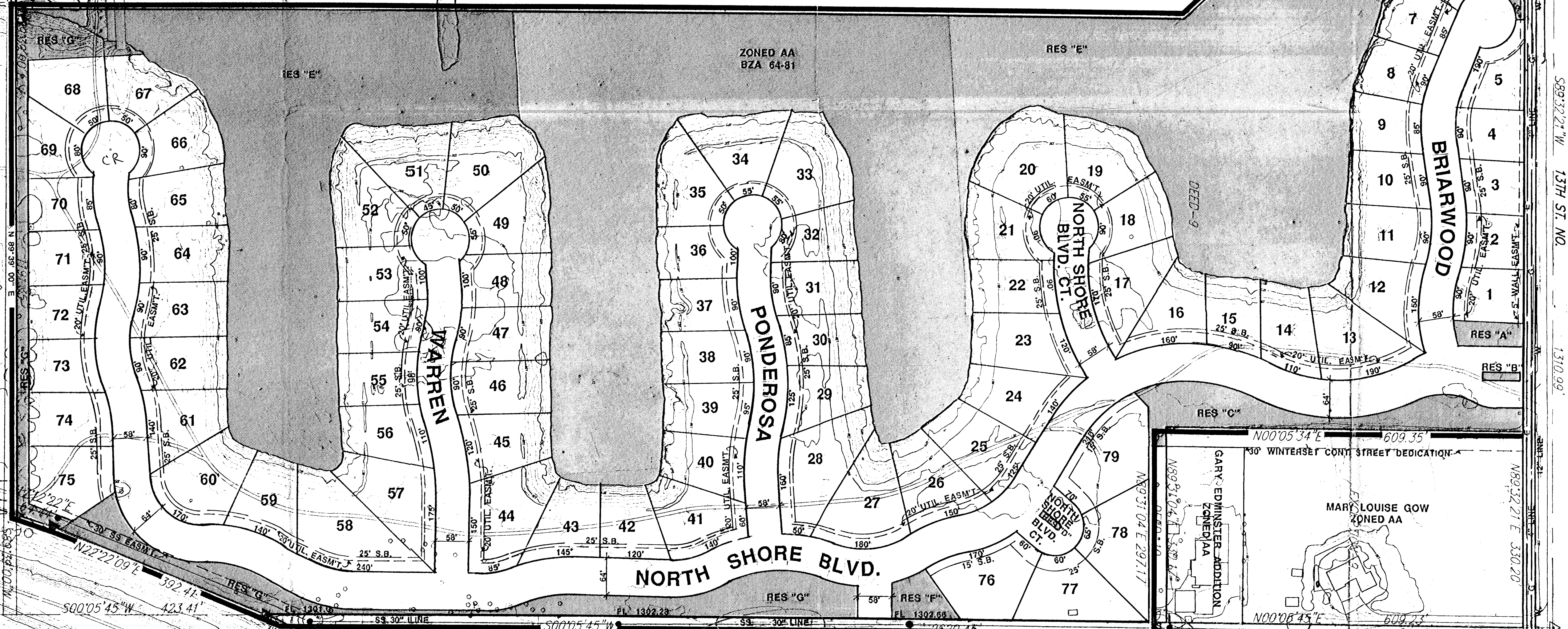
- NOTES:
1. A DRAINAGE SURVEY HAS BEEN PREPARED BY BAUGHMAN CO. PA
  2. SURVEY BY BAUGHMAN CO. PA
  3. BENCHMARK: NORTH RIM OF MAN HOLE OF THE SANITARY SEWER LINE ALONG THE EAST PROPERTY LINE (SEE DRAWING) ELEV. = 1381.01 M.S.L.
  4. RESERVES A, B, C, D, F, AND G PERMITS ENTRY WALLS AND MONUMENTS, LIGHTING, LANDSCAPING, IRRIGATION, FENCING AND WALLS, SIDEWALKS, AND UTILITIES CONFINED TO EASEMENTS.
  5. RESERVE E IS RESERVED FOR DRAINAGE, EXISTING AND PROPOSED DRAINAGE STRUCTURES, BOAT RAMPS AND DOCKS, LIGHTING, RECREATION, AND FENCING AND WALLS ALONG 13TH STREET NORTH.



RICHARD D HOSKINSON  
ZONED AA

ZONED AA  
BZA 64-81

RES "E"



RICHARD D. HOSKINSON  
ZONED AA

30' SEWER ESM'T.  
(FILM 111, PG. 168)

CITY OF WICHITA  
ZONED AA

CLIPNEY ADDITION  
ZONED AA  
BZA Z-2628

BENCHMARK  
RAYMOND G B. FRANGENBERG  
ZONED AA

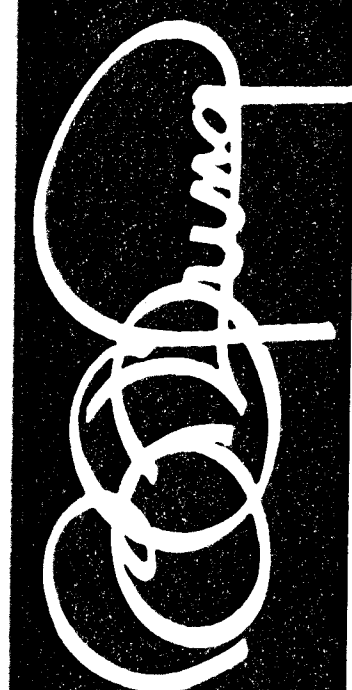
GARY EDWINSTER-ADDITION  
ZONED AA

MARY LOUISE GOW  
ZONED AA

SEGDRICK COUNTY ZOO 2ND ADDITION  
ZONED R-1

OWNER/SUBDIVIDER: V.M.B.S. DEVELOPMENT LLC 211 S. BROADWAY WICHITA, KS 67202  
ENGINEER: BAUGHMAN CO. PA 315 S. ELLIS WICHITA, KS 67211

# PRELIMINARY PLAT SPINNAKER COVES



**YUNG DESIGN GROUP**  
BRANSON OFFICE: 1821 W. HIGHWAY 76, SUITE 7 • BRANSON, MO 65616  
PH: 417-535-6635 • FAX: 417-535-6686  
WICHITA OFFICE: 4912 E. 28TH STREET NORTH • WICHITA, KS 67220  
PH: 316-663-9567 • FAX: 316-663-9566

DATE  
REV.

SHEET TITLE

PROJECT  
PROJECT NO.

SHEET  
OF