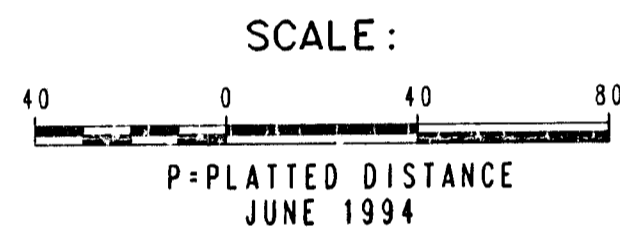
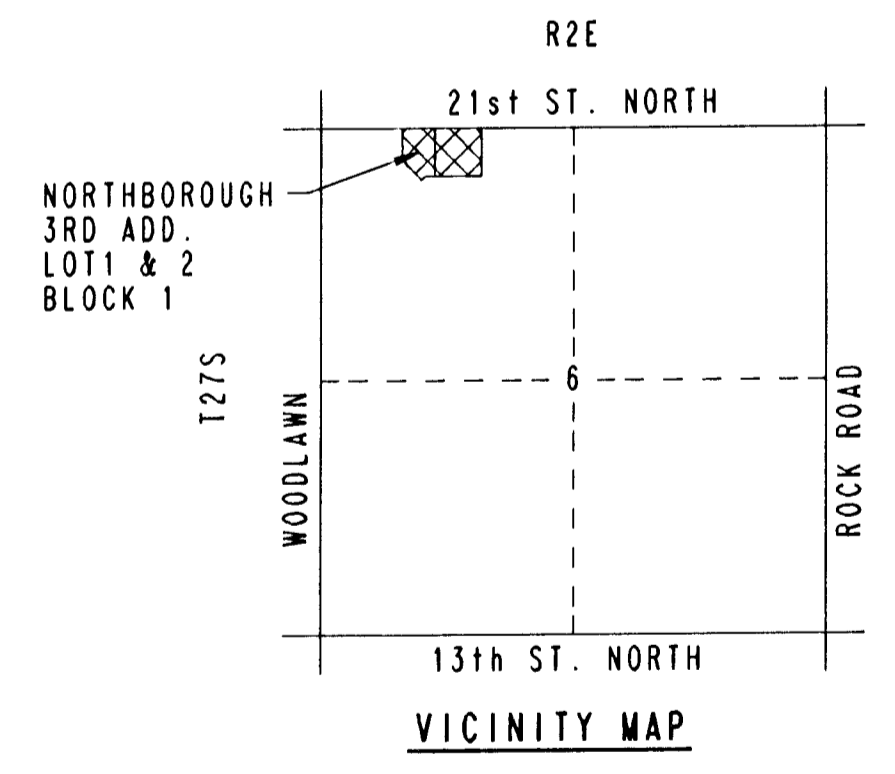


NW Corner Sec. 7, T27S,
R2E of the 6th P.M.



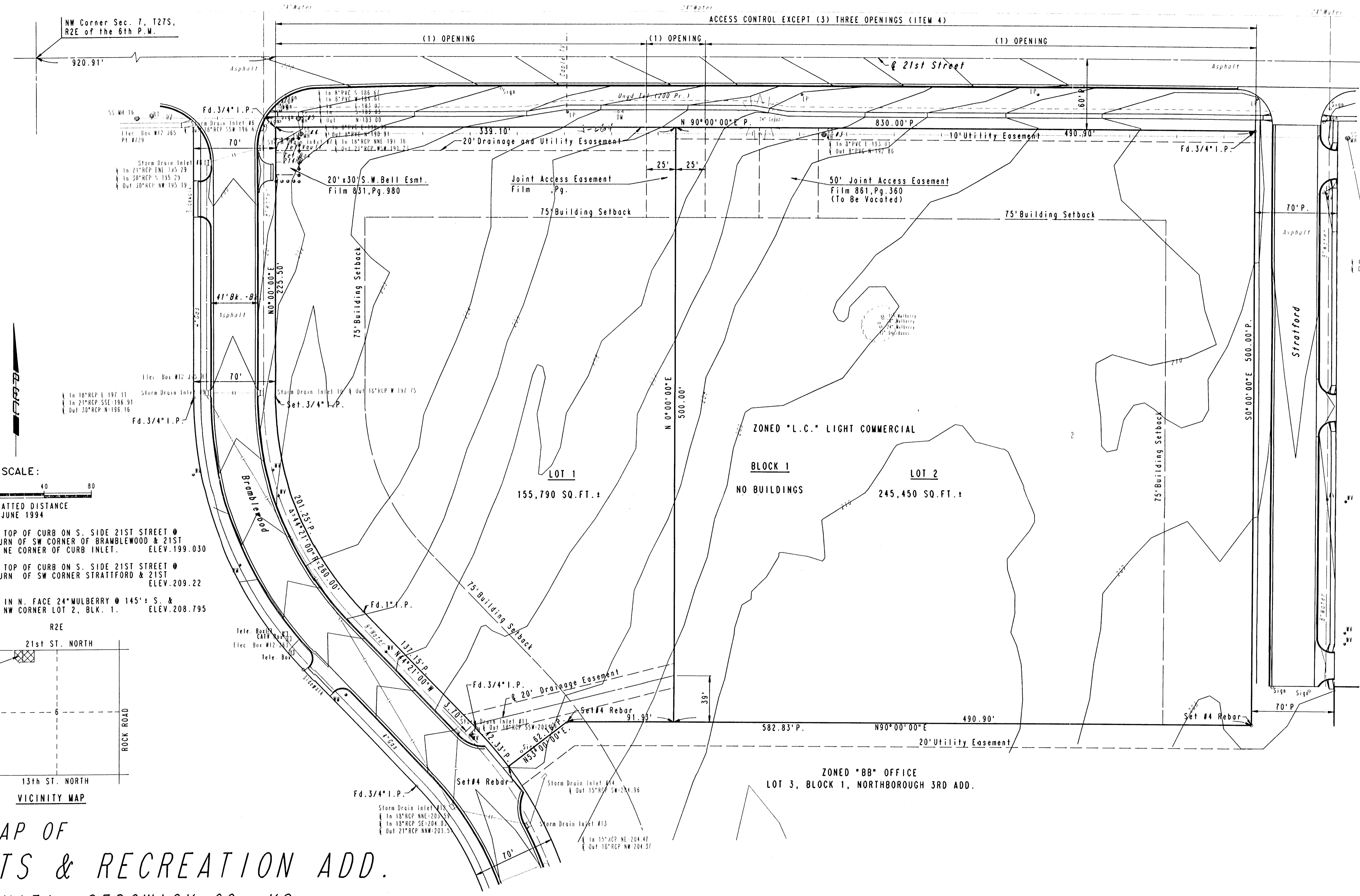
- BM#1-CHIS. "0" ON TOP OF CURB ON S. SIDE 21ST STREET @ W. P.C. RETURN OF SW CORNER OF BRAMBLEWOOD & 21ST STREET NEAR NE CORNER OF CURB INLET. ELEV. 199.030
- BM#2-CHIS. "0" ON TOP OF CURB ON S. SIDE 21ST STREET @ W. P.C. RETURN OF SW CORNER STRATTFORD & 21ST STREET. ELEV. 209.22
- BM#3-RR.R. SPIKE IN N. FACE 24" MULBERRY @ 145' ± S. & 120' ± E. OF NW CORNER LOT 2, BLK. 1. ELEV. 208.795



AREA MAP OF SPORTS & RECREATION ADD. TO WICHITA, SEDGWICK CO. KS.

OWNERS/DEVELOPER: SPORTS & RECREATION INC.
c/o ROBERT SABO
SUNCORP PROPERTIES, INC.
15438 N. FLORIDA AVENUE-SUITE 205
TAMPA, FLORIDA 33613

ENGINEERS: PROFESSIONAL ENGINEERING CONSULTANTS, P.A.
303 S. TOPEKA
WICHITA, KANSAS 67202



DRAWING NAME: 36-94316 REPT. N/BORO 3RD
DRAWING: 04 4415
E. SANCHEZ