

"SPRAY LAKE" AN ADDITION TO SEDGWICK COUNTY, KANSAS

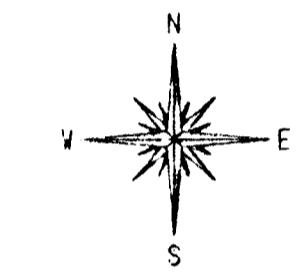
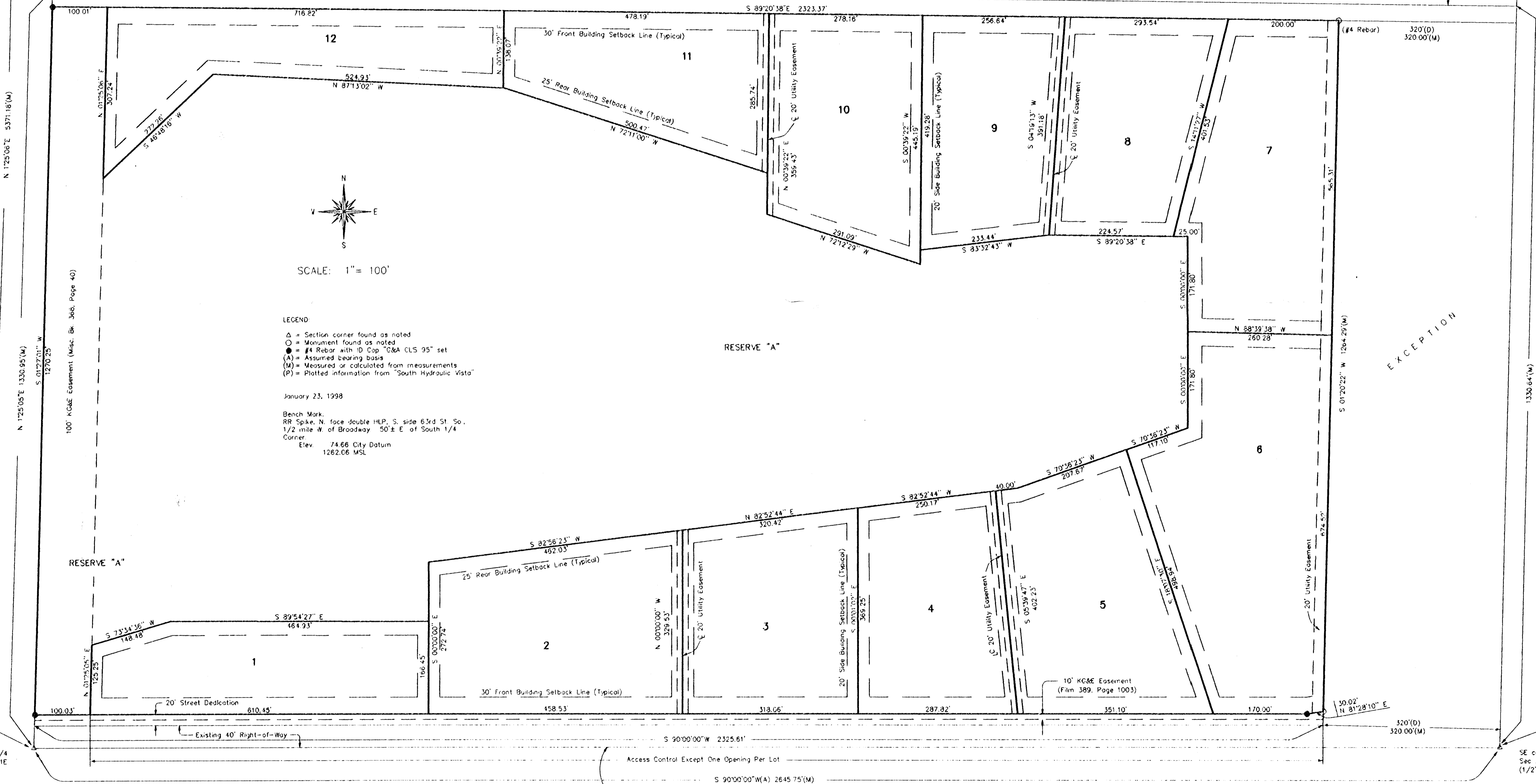
☉ 61st STREET SOUTH

S 89°20'58"E(M)
2643.4'±(P) 2643.35'(M)

NE corner, SE 1/4
Sec 28, T28S, R1E
(3/4" iron pipe)

NW corner, SE 1/4
Sec 28, T28S, R1E
(3/4" iron pipe)

300'±(M)



SCALE: 1" = 100'

LEGEND
 Δ = Section corner found as noted
 ○ = Monument found as noted
 ● = #4 Rebar with ID Cop "G&A CLS 95" set
 (A) = Assumed bearing basis
 (M) = Measured or calculated from measurements
 (P) = Plotted information from "South Hydraulic Vista"

January 23, 1998
 Bench Mark:
 RR Spike, N. face double HLP, S. side 63rd St. So.,
 1/2 mile W. of Broadway 50'± E of South 1/4
 Corner
 Elev. 74.66 City Datum
 1262.06 MSL

INTERSTATE I-35

HYDRAULIC AVENUE

EXCEPTION

☉ 63rd STREET SOUTH

S 90°00'00"W 2325.61'
 Access Control Except One Opening Per Lot
 S 90°00'00"W(A) 2645.75'(M)

SW corner, SE 1/4
Sec 28, T28S, R1E
(#4 Rebar)

SE corner, SE 1/4
Sec 28, T28S, R1E
(1/2" iron pipe)



Griffiths & Associates, Inc.
 Land Surveyors

688 N. Cho
 Wichita, KS 67224
 (316) 261-9000
 Fax: (316) 282-0080