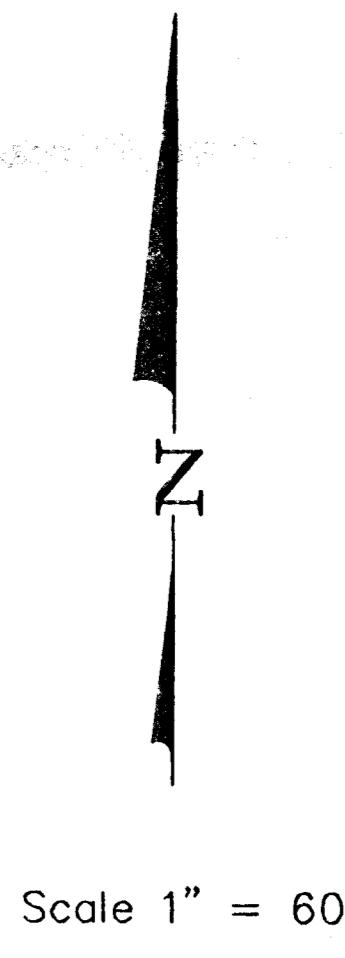
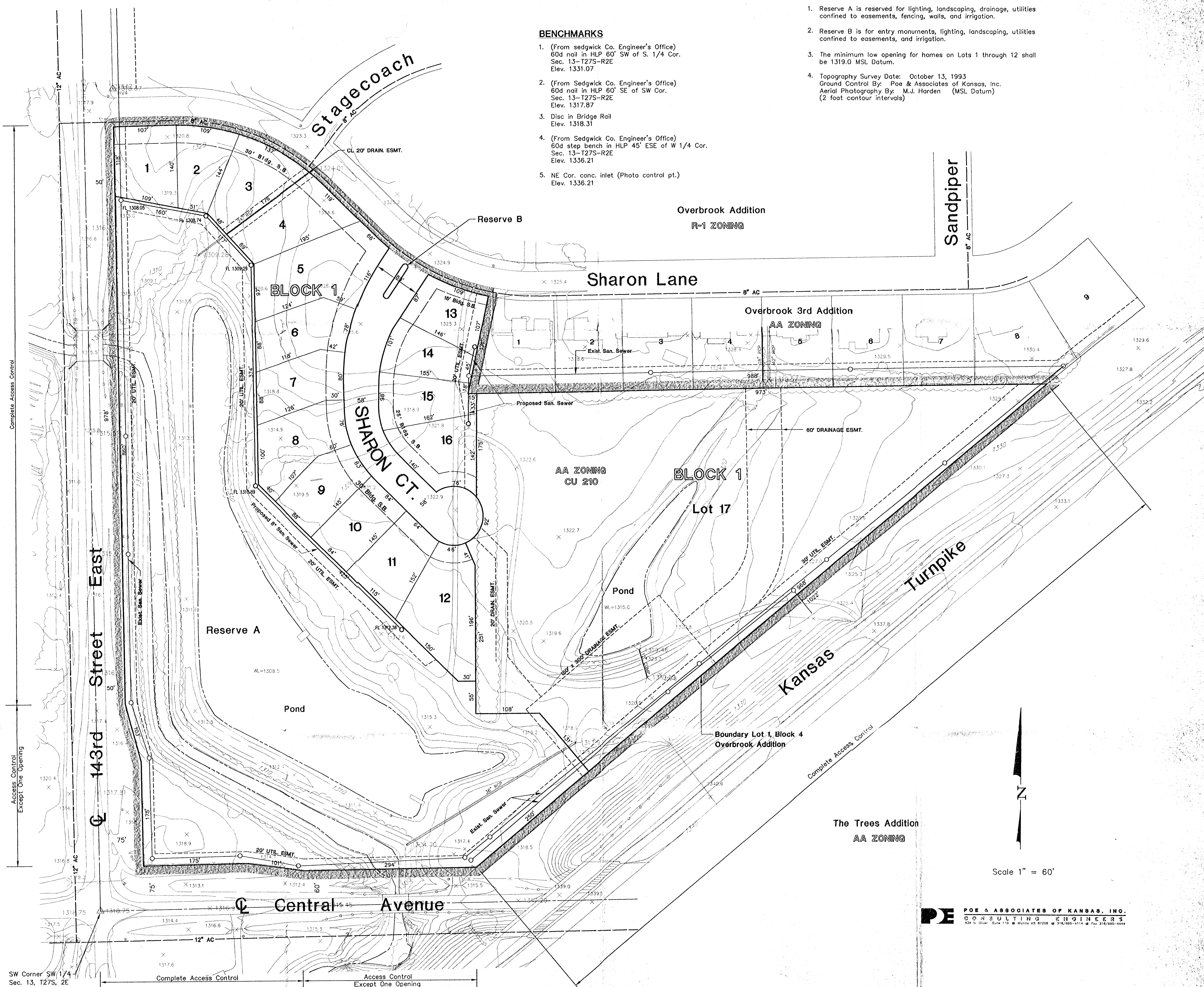


**NOTES**

1. Reserve A is reserved for lighting, landscaping, drainage, utilities confined to easements, fencing, walls, and irrigation.
2. Reserve B is for entry monuments, lighting, landscaping, utilities confined to easements, and irrigation.
3. The minimum low opening for homes on Lots 1 through 12 shall be 1319.0 MSL Datum.
4. Topography Survey Date: October 13, 1993  
Ground Control By: Poe & Associates of Kansas, Inc.  
Aerial Photography By: M.J. Harden (MSL Datum)  
(2 foot contour intervals)

**BENCHMARKS**

1. (From Sedgwick Co. Engineer's Office)  
60d nail in HLP 60' SW of S. 1/4 Cor.  
Sec. 13-T27S-R2E  
Elev. 1331.07
2. (From Sedgwick Co. Engineer's Office)  
60d nail in HLP 60' SE of SW Cor.  
Sec. 13-T27S-R2E  
Elev. 1317.87
3. Disc in Bridge Rail  
Elev. 1318.31
4. (From Sedgwick Co. Engineer's Office)  
60d step bench in HLP 45' ESE of W 1/4 Cor.  
Sec. 13-T27S-R2E  
Elev. 1336.21
5. NE Cor. conc. inlet (Photo control pt.)  
Elev. 1336.21



**PE** POE & ASSOCIATES OF KANSAS, INC.  
CONSULTING ENGINEERS  
434 N. Oliver, Suite 110 • Wichita, KS 67208 • 316/685-4114 • Fax 316/685-4444

**OWNER:** Karl Solomon  
625 N. Carriage Parkway  
Wichita, Kansas 67208

**DEVELOPER:** Dave Sproul  
Sproul Construction  
3500 N. Rock Rd.  
Wichita, Kansas 67226

**PRELIMINARY PLAT**

**THE SPRINGS AT CRESTVIEW**

March 30, 1994