

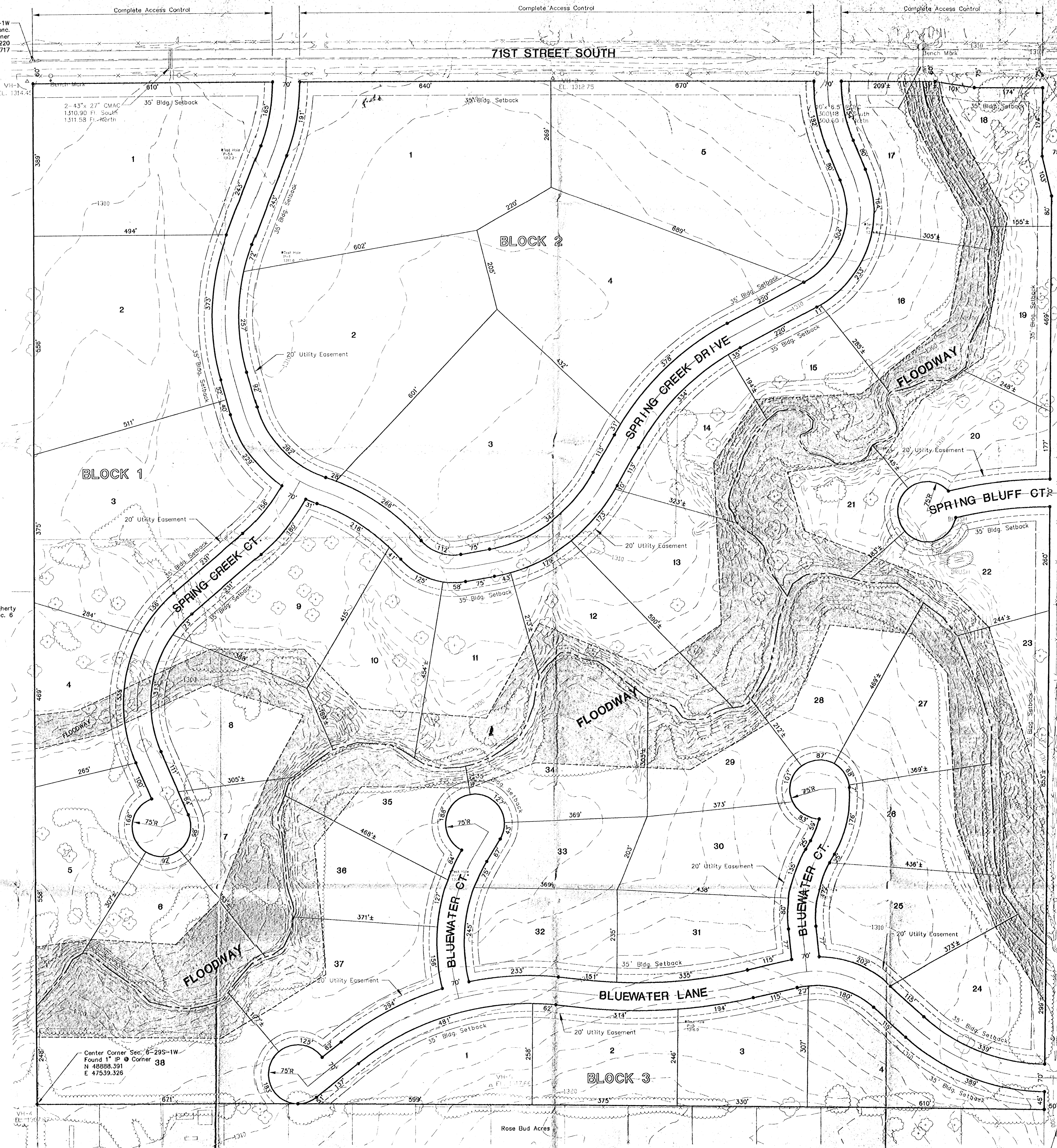
N 1/4 Corner Sec. 6-295-1W  
Found 1/2" Bar Set in Conc.  
Surface @ Corner  
N 51542.220  
E 47544.717

NE Corner Sec. 6-295-1W  
Found 1/2" Bar @ Corner  
N 51542.216  
E 50194.813  
20' x 18" C.M.A.C.  
1307.59 Ft. East  
1305.48 Ft. West

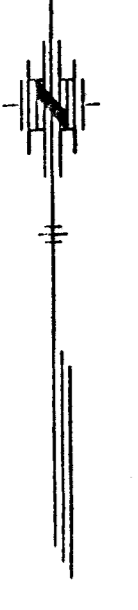
Koron L. Joax  
10735 Harvest Ct.  
Wichita, KS.

Monte L. & Betty Rhoads  
7500 S. 103rd St. W.  
Clearwater, KS. 67026

2-21 Conc. Slab Spans  
W.S. Elev. 1303.2 (12-5-95)  
Fl. Elev. 1303.94



Anna B. Dougherty  
E/2 NW/4 Sec. 6



Scale 1" = 100'

# PRELIMINARY PLAT SPRING CREEK ADDITION

## TO SEDGWICK COUNTY, KANSAS

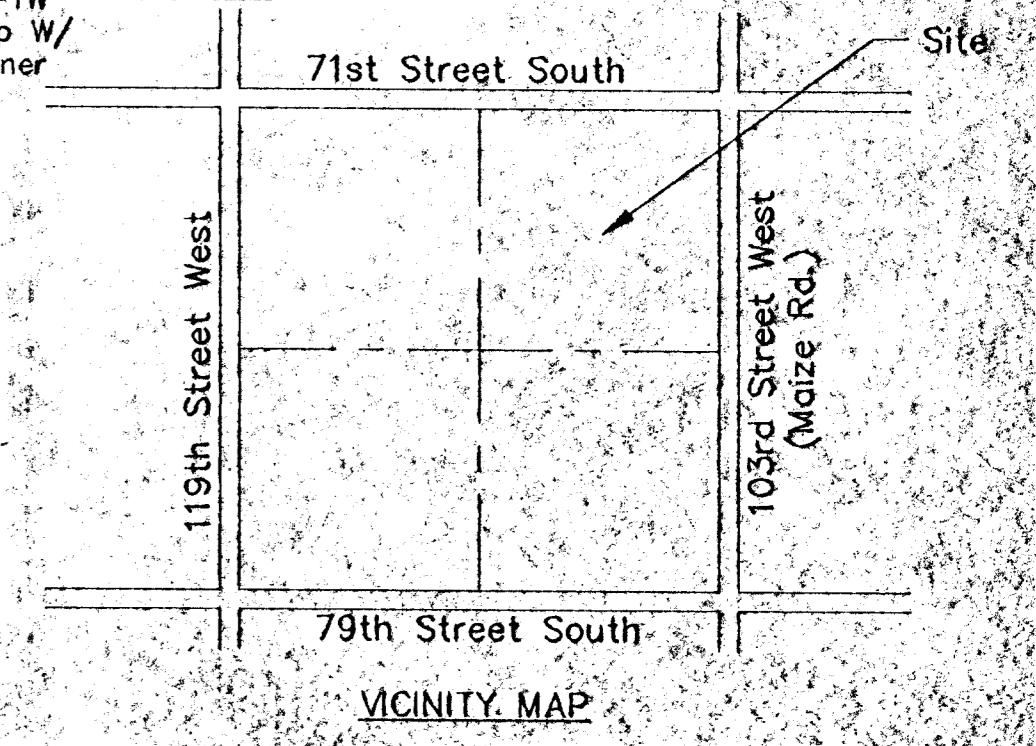
Developer: Jeff Lange  
4911 S. Meridian  
Wichita, KS. 67217

Date: March 8, 1996

POE & ASSOCIATES OF KANSAS, INC.  
CONSULTING ENGINEERS  
451 N. Oliver, Suite 119 Wichita, KS 67208 316/685-4118

1. Bench Mark, Brass in N. Hubguard of RCBC, 420' W. of NE. Cor. Sec. 6. (From Co. Engineers Records) Elev. 1309.85  
Datum Bench Mark, 60d Spike in power pole, 45' E. and 40' S. of N. 1/4 Cor. Sec. 6. (From Co. Engineers Records) Elev. 1315.39
2. Date of Survey: December 1995
3. Lot Size: 2 acre or 5 acre
4. Existing Zoning of this Plat and all Surrounding Property is "R" (2 Acre Residential)

E. 1/4 Cor. Sec. 6-295-1W  
Found 5/8" Bar 18" Deep W/  
1-1/2" IP On Top @ Corner  
N 48870.815  
E 50174.568



FILED: 1996 MAR 11 08:56:10 1996 (611) Henderson - Poe and Associates, Inc.